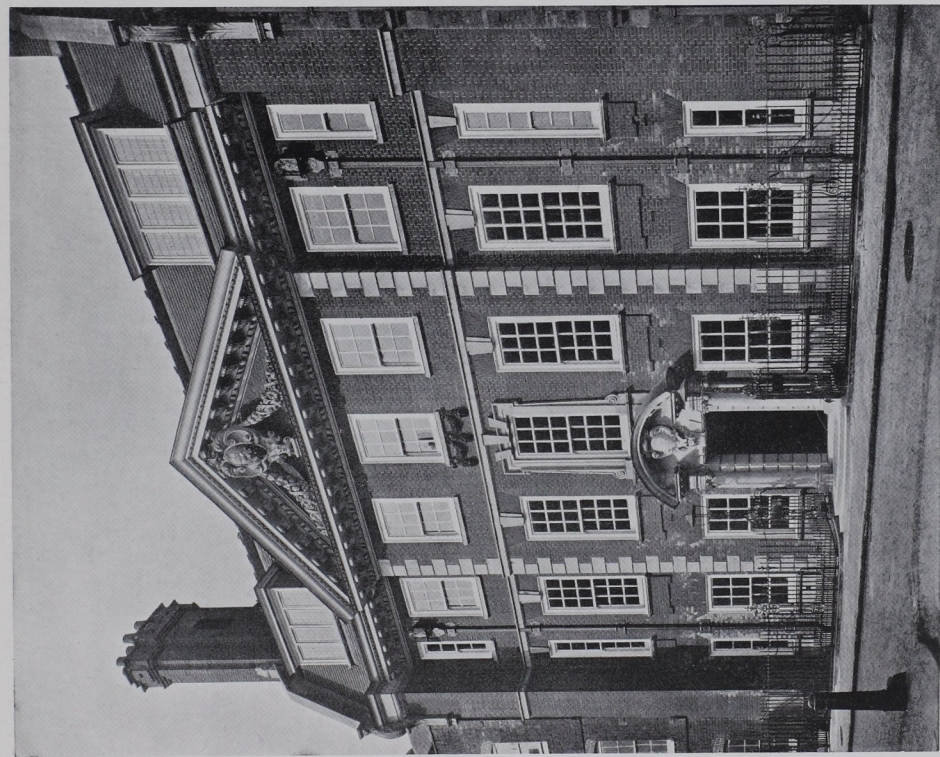
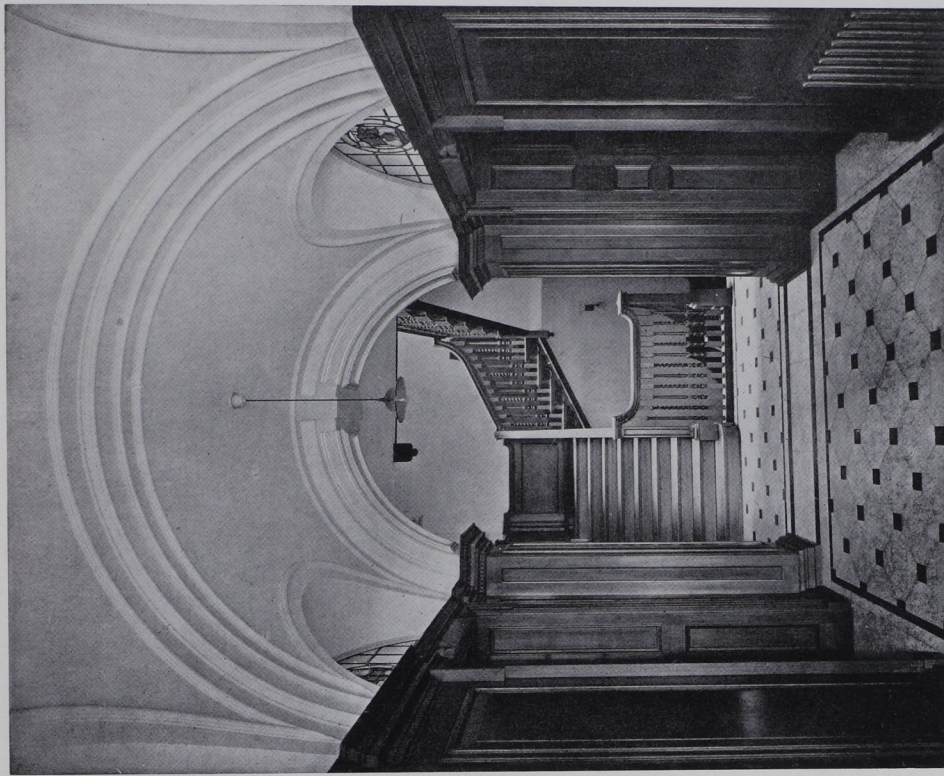


URBAN HOUSE: EXTERIOR AND INTERIOR DESIGN



THE FRONT TO COWLEY STREET
LONDON OFFICES OF THE NORTH EASTERN RAILWAY COMPANY, COWLEY STREET, WESTMINSTER, LONDON. THIS BUILDING IS FACED WITH DARK AND LIGHT RED BRICKS,
TWO INCHES THICK; THE CARVING, BOTH IN WOOD AND IN STONE, WAS CARRIED OUT BY MESSRS. AUMONIER & SON



ENTRANCE HALL AND MAIN STAIRCASE
LONDON OFFICES OF THE NORTH EASTERN RAILWAY COMPANY, COWLEY STREET, WESTMINSTER, LONDON. THIS BUILDING IS FACED WITH DARK AND LIGHT RED BRICKS,
TWO INCHES THICK; THE CARVING, BOTH IN WOOD AND IN STONE, WAS CARRIED OUT BY MESSRS. AUMONIER & SON

Horace Field, F.R.I.B.A., Architect