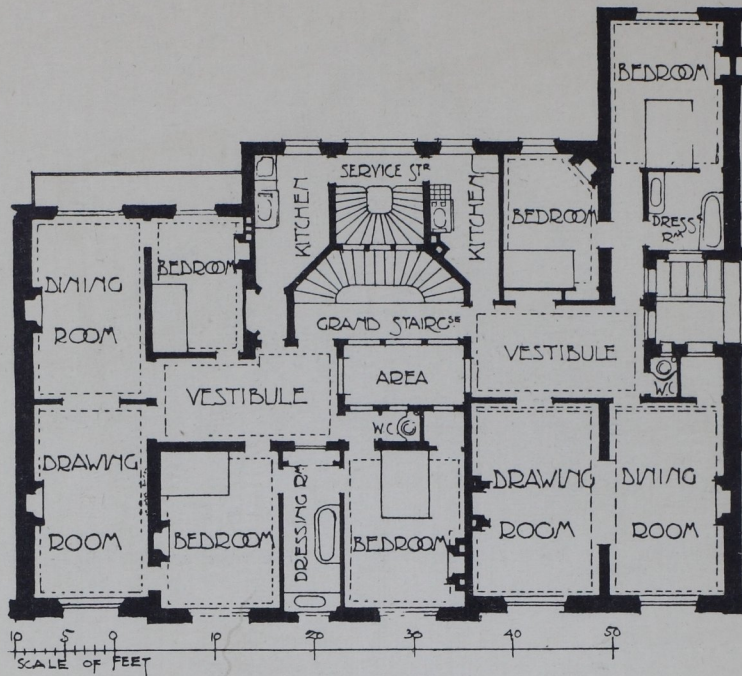


French Flats: Planning



PARIS FLATS; RUE CAULAINCOURT, NO. 43. SEE THE CRITICISM ON PP. 95, 97
M. P. RIGAUD, ARCHITECT

vestibule-galerie, but it will be observed that the dining-room has a wide glazed entrance screen next the vestibule which gives a bright appearance to the whole place (p. 99). The irregular shape of the site has been well treated to give interesting shapes to the rooms without any loss of space.

Rue Danton and the Boulevard St. Germain, No. 114, by M. Blavette, is an able utilization of a very irregular site. The passages are lacking in direct light and ventilation, but otherwise the planning is excellent and very suggestive. The dignified and spacious entrance should be noted (p. 100.)

Rue du Ranelagh, No. 74, by M. Alfred Michel, is again an able treatment, both internally and externally, of an angle of two streets (p. 101). The hall and three reception-rooms form an admirable suite, well lighted. In the Rue de Vaugirard, by M. Delangle, we have a corner site with two flats to a floor. In each the reception-rooms and entrance galerie are arranged *en suite* with wide openings. There is a separate service staircase to each flat with direct access to the kitchens, which are well cut-off, and there is a