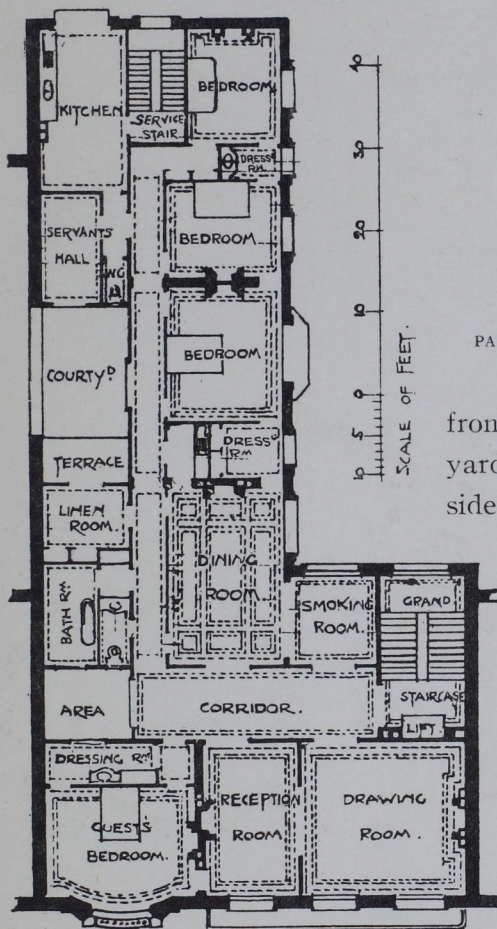


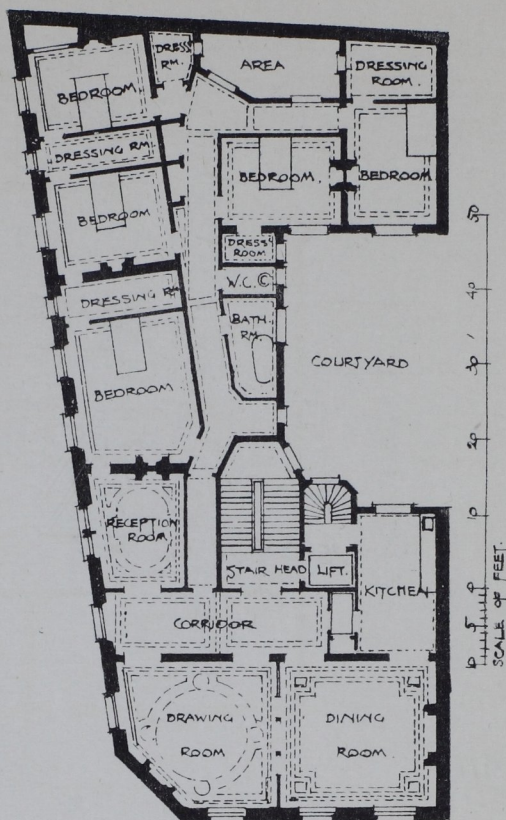
Flats: Austrian and French

bathroom is entered from the living-room, and this appears to be an undesirable feature.

An interesting plan is given (p. 94) of a large building in Vienna by Professor Carl König, the sides of which form an acute-angled triangle. It is at the corner of two streets, and has a carriage entrance in the centre of the principal



PARIS FLAT, AVENUE VICTOR HUGO, NO. 167



PARIS FLAT, BOULEVARD MALESHERBES, NO. 162
SEE THE CRITICISM ON PAGE 90

front, a small glass-covered courtyard, and a way through to the side street.

There is a stable within the main buildings entered from the courtyard. The second and third floors are divided into two complete suites of flats. Two principal staircases are carried to the mezzanine and first floor; only one of these goes up higher, and a service staircase is carried from bottom to top.