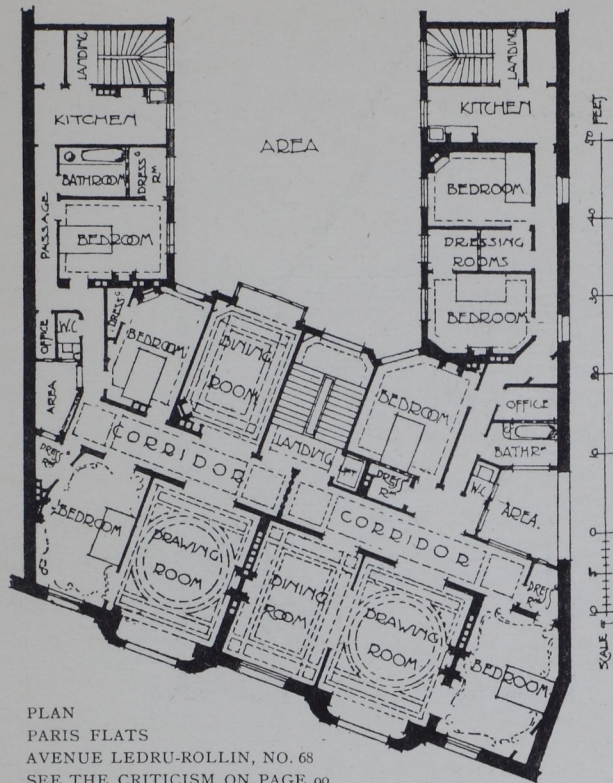


## Flats—French and Austrian



PLAN  
PARIS FLATS  
AVENUE LEDRU-ROLLIN, NO. 68  
SEE THE CRITICISM ON PAGE 90  
M. MONTALTO, ARCHITECT

There is an excellent treatment of an acute-angled small site at the corner of the Rue Montmartre and the Rue Réaumur by M. Gautrin (p. 92). The angle itself is occupied by a circular salon, the other six rooms all face the two streets; the staircase is circular, lighted from an internal court, and the passage is also well lighted. Externally the design is simple and well propor-

tioned the angle being surmounted by a dome. Perhaps it may be permissible to mention one of my own buildings in London with a rather awkward site (p. 35). It is a quadrant on plan at the corner of Sloane Gardens. The building contains on each floor one flat with an entrance hall, seven rooms, besides kitchen, scullery and bathroom, a larder and a wine cellar.

British visitors in Vienna will find many flats of varied interest. On a small site in the Stammgasse there is a house designed by Baron Max Ferstel. It is six stories in height, the top floor containing studios, the other floors having each a flat with five rooms, in addition to a kitchen, a larder and a servant's bedroom attached. Two nurseries are placed at the rear, with separate service from the kitchen. There is also an access from the living-room to these children's rooms, so that the mother has a ready control. The bathroom and water-closet are ventilated into a small area, but, speaking from memory, the