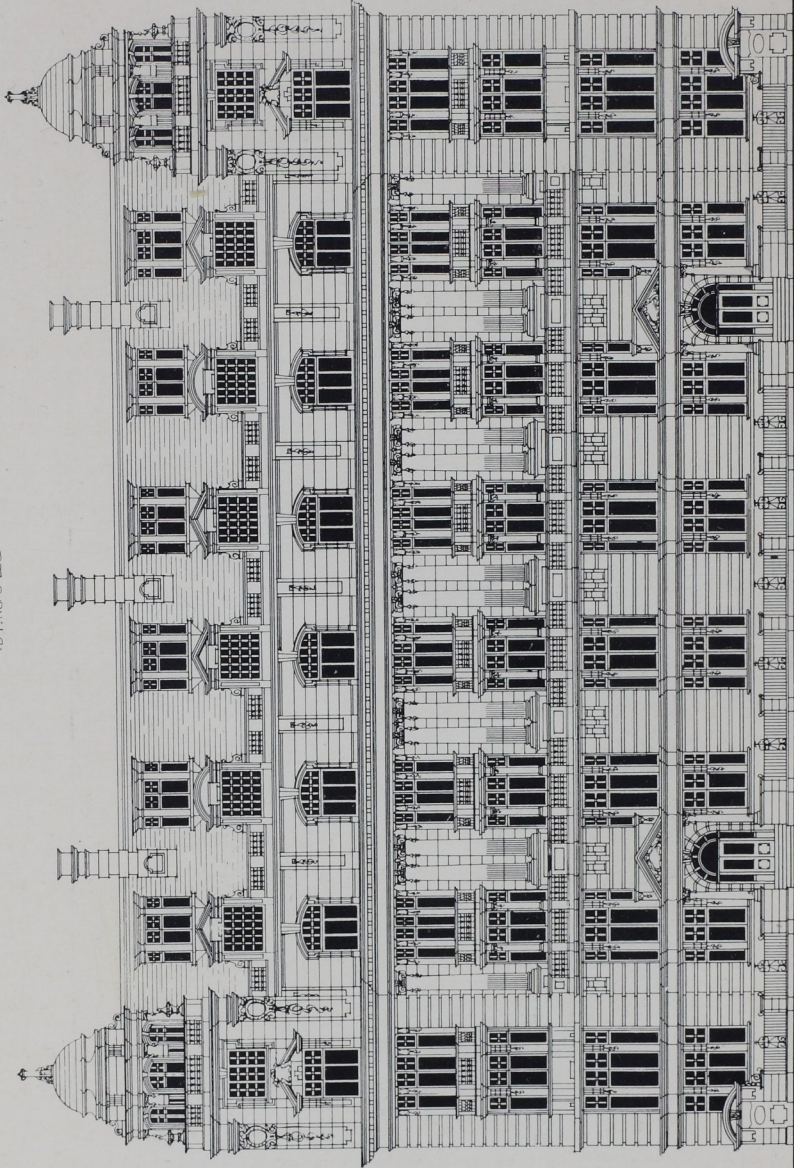


MANSION FLATS: EXTERIOR DESIGN

'HARCOURT HOUSE' CAVEDISH SQ.W.

FOR (OR THOMAS D. FILE DART
S. LINDEN BLDG.
D. HINGEN BLDG.)



GILBERT, CONSTANDAUROS
& HINCHY, ARCHT.

ELEVATION TO CAVEDISH SQ. *

A BLOCK OF FLATS DE LUXE NOW BEING BUILT IN CAVEDISH SQUARE ON THE SITE OF OLD HARCOURT HOUSE. THE ELEVATION TO THE SQUARE IS GEORGIAN, AND THE LARGE BALCONY ON THE SECOND FLOOR LEVEL GIVES AN EFFECTIVE SHADOW. THE PLANS ARE REPRESENTED ON PAGE 79.

Horace Gilbert, A.R.I.B.A., and S. Constanduros

Architects