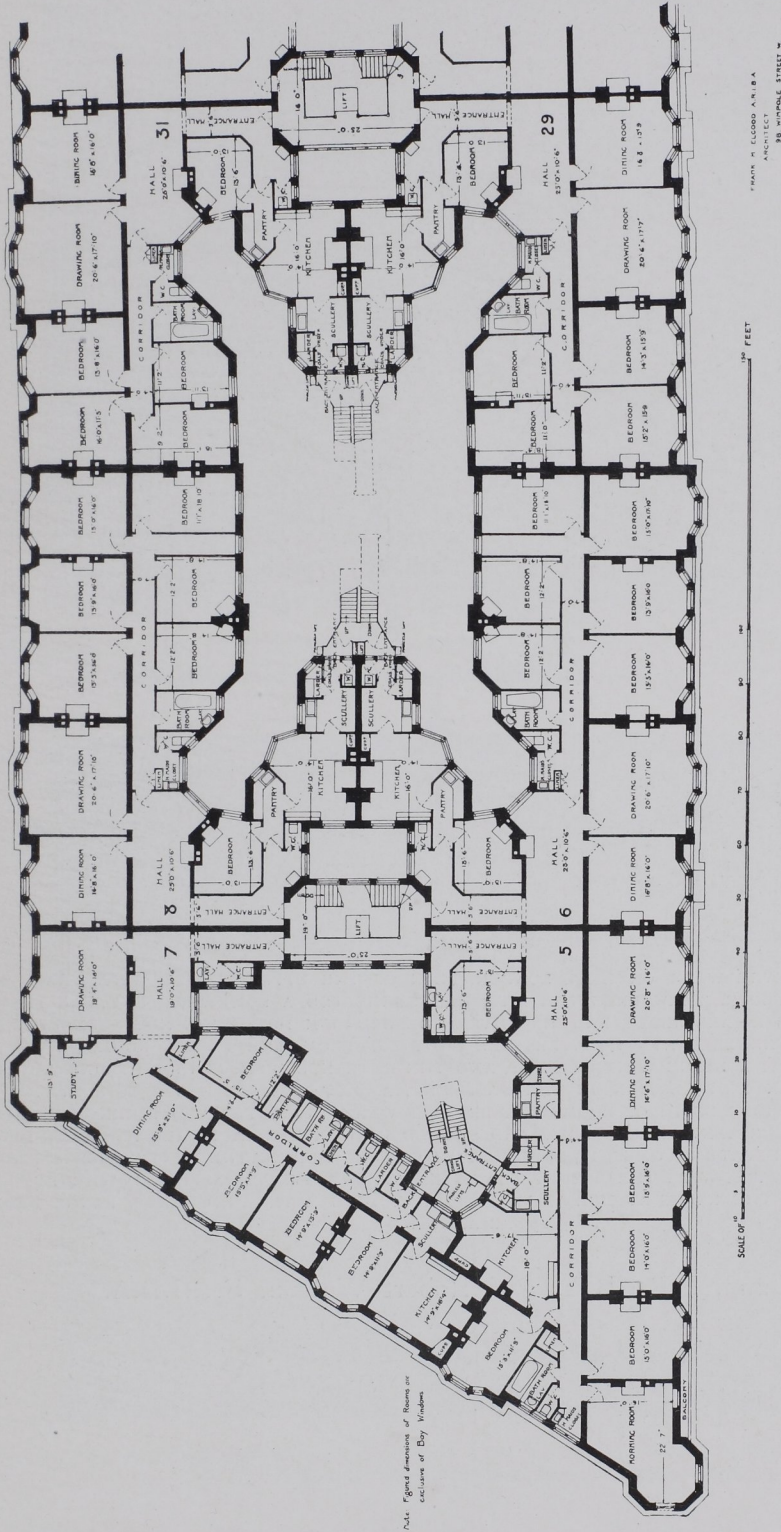


FLATS FOR THE WELL-TO-DO: PLANNING



Note: Figures dimensions of Rooms are calculated on basis of Day Windows

NORTH GATE, REGENT'S PARK, LONDON. PLAN OF THE FIRST FLOOR SHOWING AN OPEN SITE AND THE ARRANGEMENT OF SIX FLATS. IT WILL BE NOTED THAT THE ROOMS ARE LARGE AND AIRY, THAT THE HALLS ARE NOT ONLY COMFORTABLY BIG BUT WARM AND LIGHT, AND AGAIN, THAT THE KITCHENS ARE WELL PLACED IN RELATION TO THE OTHER OFFICES OF THE SERVICE QUARTERS. ON PAGE 58 TWO INTERIOR VIEWS OF THIS BUILDING ARE GIVEN. THE RENTS, INCLUDING RATES AND TAXES, RANGE FROM £200 TO £450 PER ANNUM

Frank M. Elgood, A.R.I.B.A., Architect