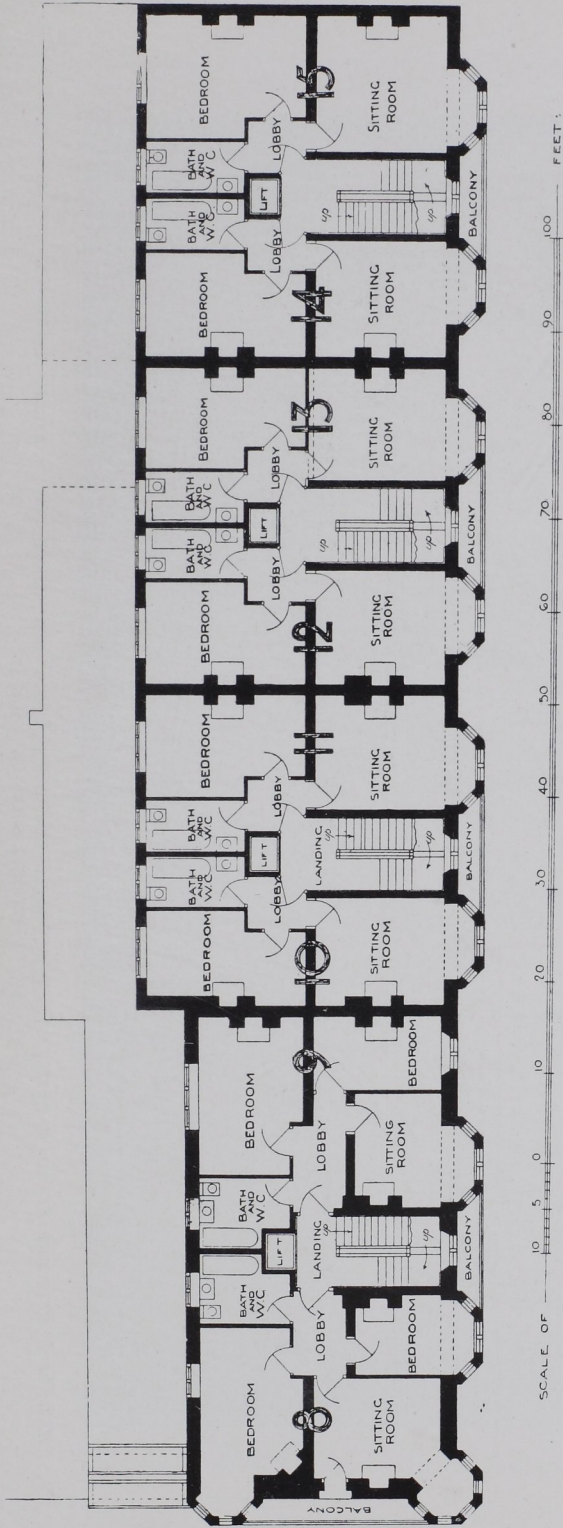


BACHELORS' FLATS: PLANNING



FIRST FLOOR PLAN.

AUDLEY HOUSE, MARGARET STREET, LONDON, W. THE FIRST FLOOR PLAN APPLIES ALSO TO THE SECOND, THIRD, AND FOURTH FLOORS, AND THE FOUR TOGETHER CONTAIN IN ALL 39 FLATS. THE FIFTH FLOOR HAS FIVE SPARE-BEDROOMS AS WELL AS STOREROOMS AND TANK-ROOMS; THE WHOLE OF THESE ARE LIT ON THE NORTH SIDE, THE BASEMENT, PLANNED IN ONE FLOOR, RUNS UNDER THE WHOLE BUILDING AND IS VERY WELL ARRANGED. THERE ARE ROOMS FOR THE CARETAKER, BEDROOMS FOR THE SERVANTS, A GOOD KITCHEN WITH THE USUAL OFFICES, AND A BOILER-ROOM IN VAULTS UNDER THE PAVEMENT. IN ADDITION TO THAT, THERE IS A SEPARATE STOREROOM FOR EACH FLAT AND A BRUSHING-ROOM FOR EACH TENANT'S CLOTHES

J. W. Simpson, F.R.I.B.A., and Maxwell Ayrton, A.R.I.B.A.,
Architects