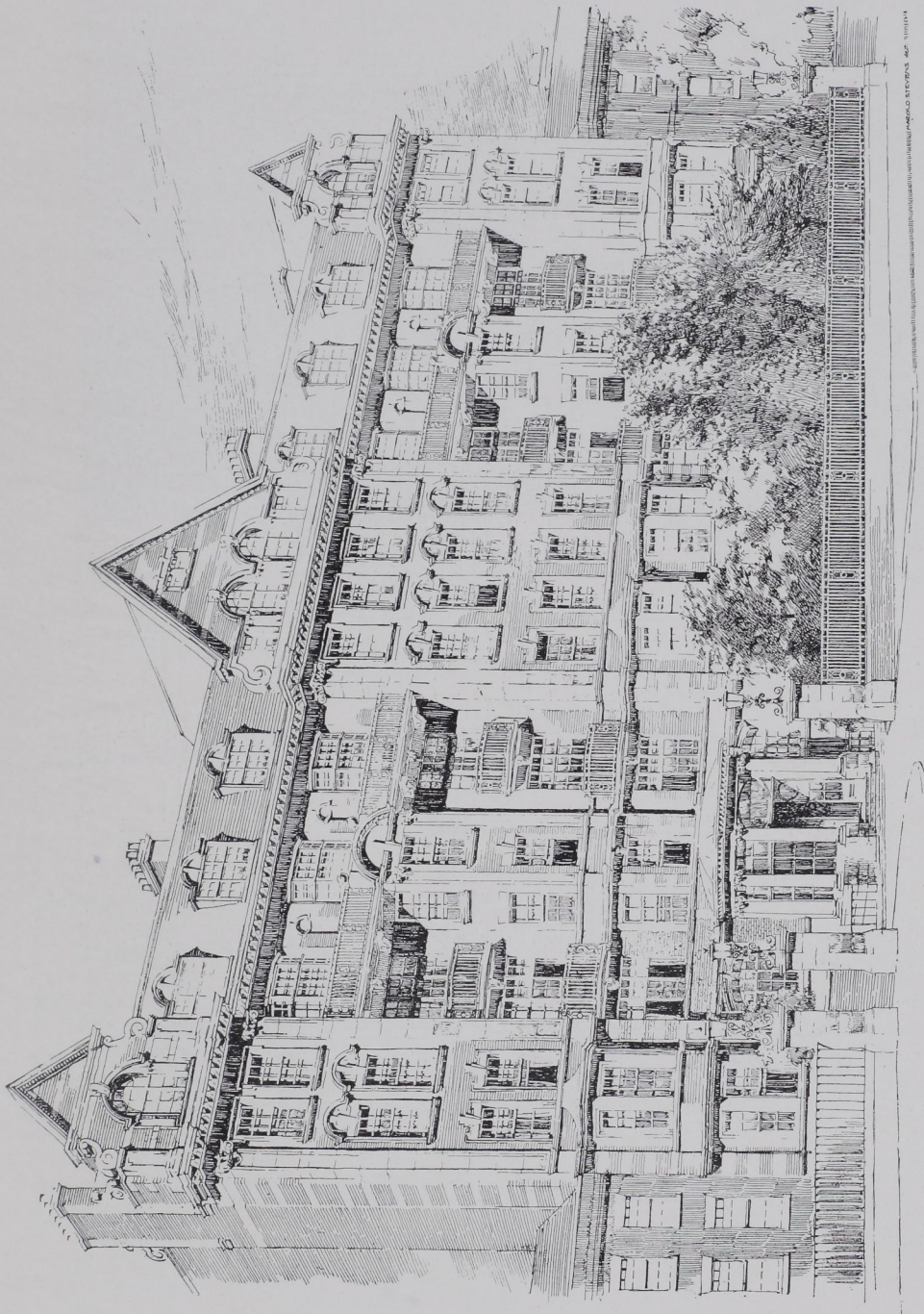


FLATS FOR MODERATE INCOMES: EXTERIOR DESIGN



SANDRINGHAM COURT, MAIDA VALE, LONDON. THE SITE IS OPEN TO A ROAD BEHIND AS WELL AS IN FRONT. THE MATERIALS ARE RED BRICKS, PORTLAND AND BATH STONE, WITH SLATE ROOFS; THE COLUMNS TO THE PORCHES ARE OF GRANITE. THE RENTS FOR THESE NEW FLATS, INCLUDING RATES AND TAXES, ARE EXPECTED TO RANGE FROM £70 TO £180 A YEAR. REPRODUCED FROM A DRAWING BY HAROLD STEVENS
SEE THE PLANS ON PAGE 52

Boehmer and Gibbs, Architects