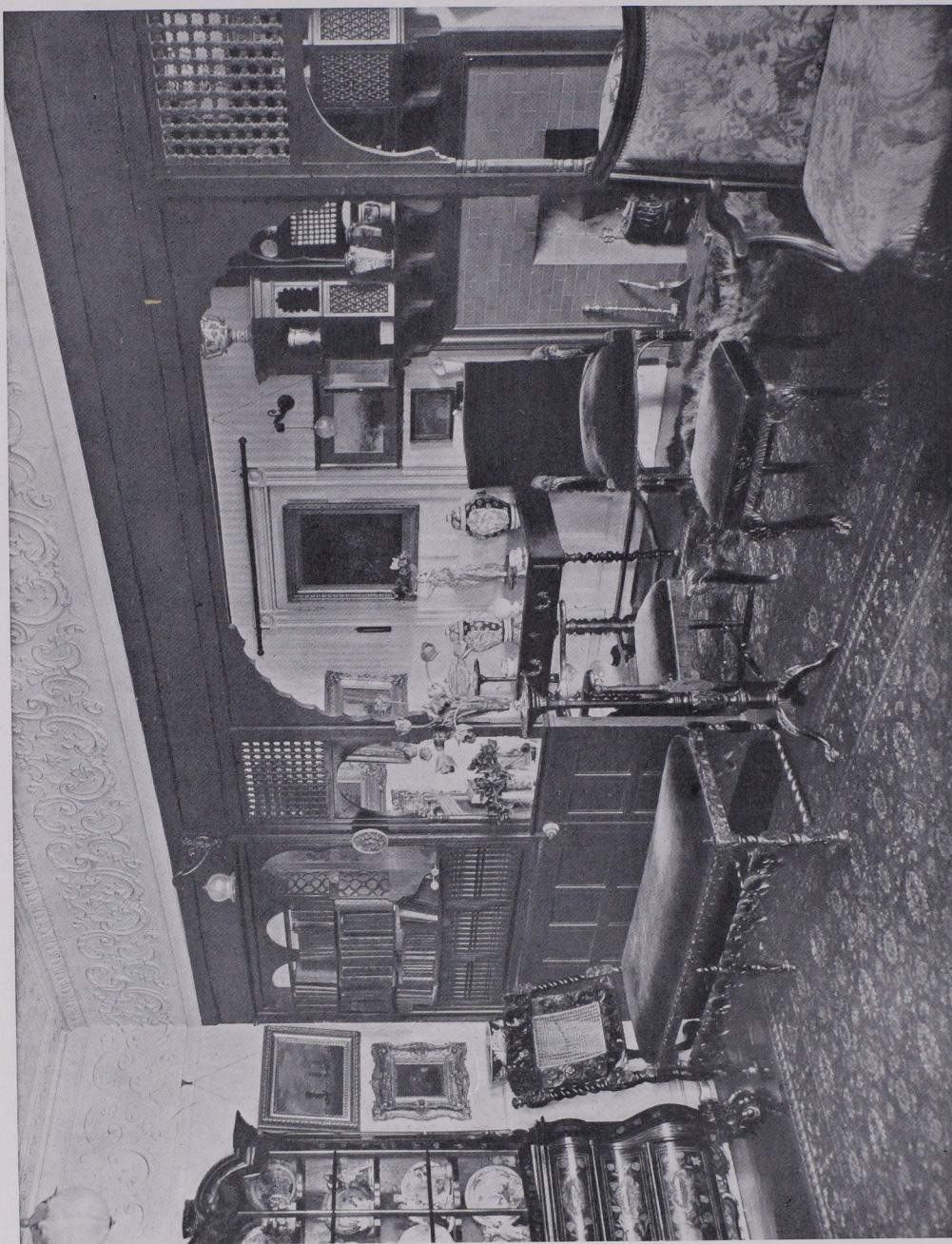


FLATS FOR THE WELL-TO-DO: INTERIOR DESIGN



THE DRAWING-ROOM IN MRS. MACHELL-SMITH'S FLAT, 44, BUCKINGHAM STREET, STRAND, LONDON. THE WALL-PAPER, FRIEZE AND CEILING ARE WHITE, AND THE WOODWORK ALSO, EXCEPT THE MOORISH SCREEN, WHICH IS DARK BROWN. THE CURTAINS AND UPHOLSTERY ARE IN TINTS OF CRIMSON; THE FURNITURE IS OLD ENGLISH, THE CHINA ORIENTAL. SEE THE ILLUSTRATIONS ON PAGES 48 AND 49