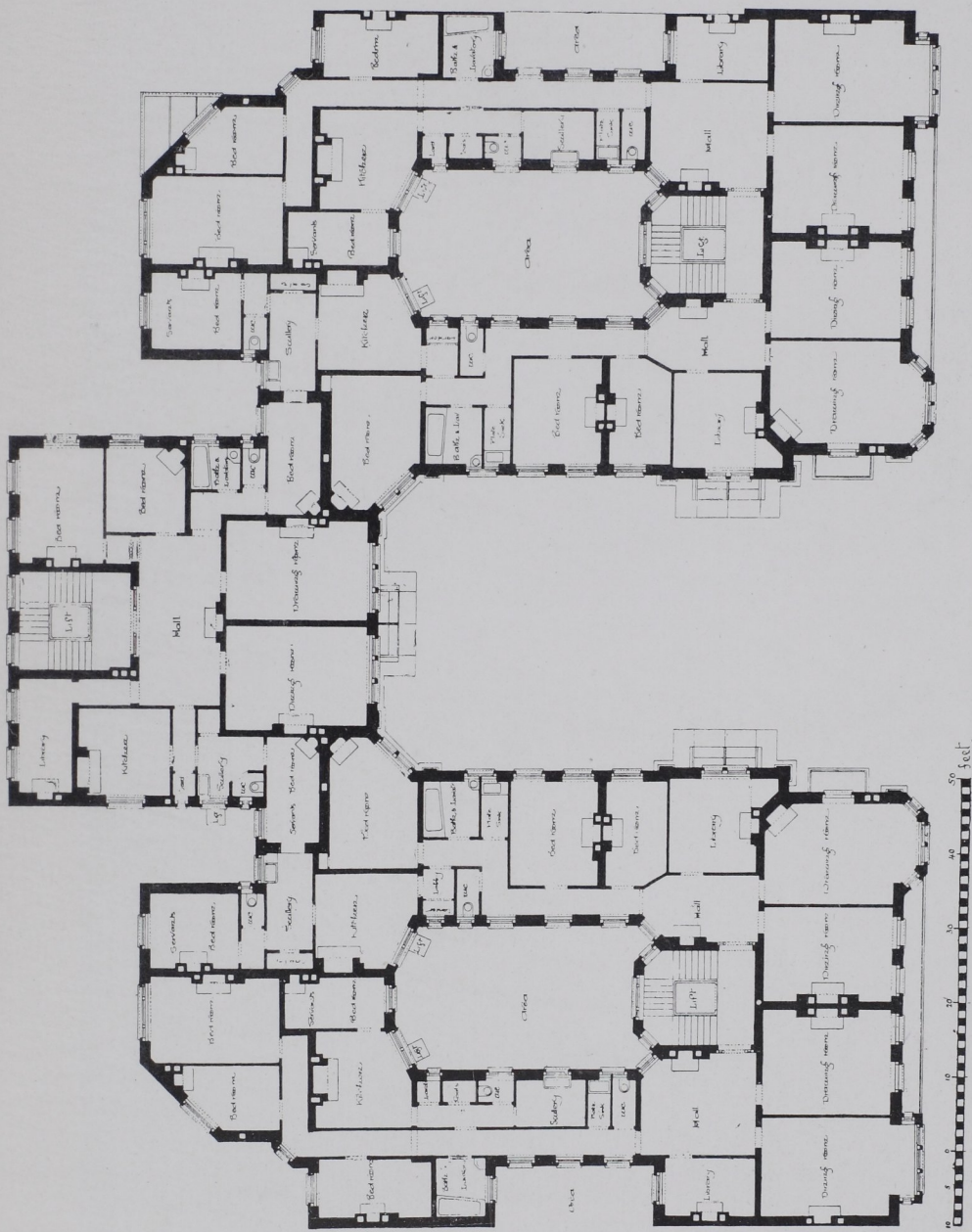


FLATS FOR THE WELL-TO-DO: AN EXAMPLE OF PLANNING



ALEXANDRA COURT, NOS. 171, 173 AND 175, QUEEN'S GATE, LONDON. THIS BLOCK OF FLATS STANDS ON A SITE OF VERY CONSIDERABLE DEPTH AND IS ARRANGED AROUND A CENTRAL COURTYARD. THERE ARE FIVE GOOD SUITES ON EACH FLOOR, AND EACH SUITE CONTAINS AN ENTRANCE HALL, THREE RECEPTION-ROOMS, FOUR BEDROOMS AND AMPLE OFFICES. ALL THE LIVING ROOMS OVERLOOK QUEEN'S GATE OR THE GARDENS IN THE REAR. THE LIGHTING IS GOOD THROUGHOUT, THE AREAS ARE WELL VENTILATED. THE RENTS, INCLUDING RATES AND TAXES, RANGE FROM £280 TO £400 A YEAR

Paul Hoffmann, Architect