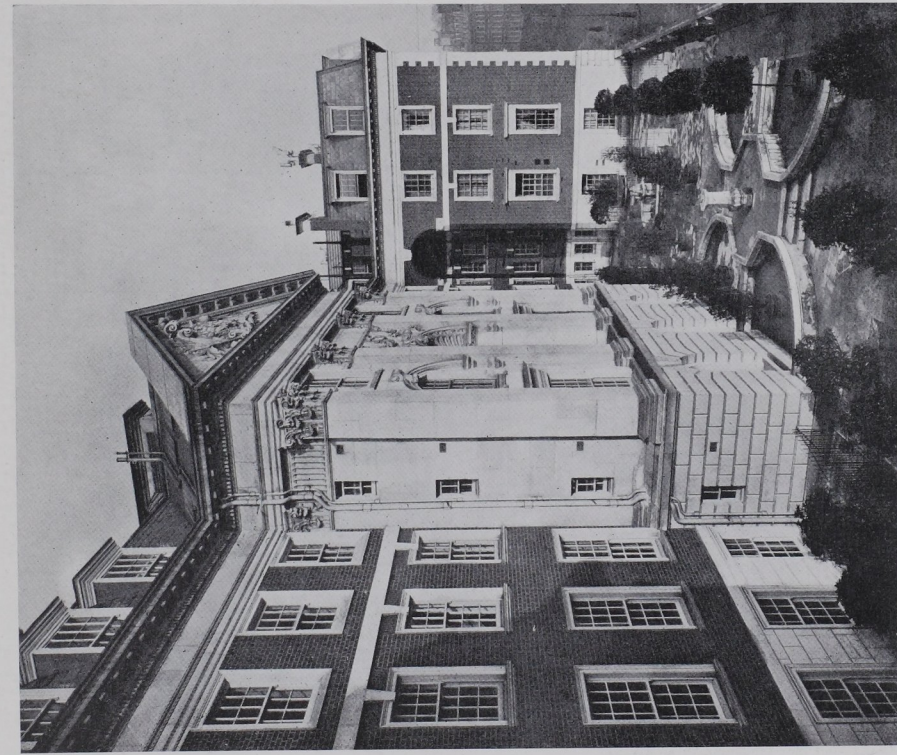
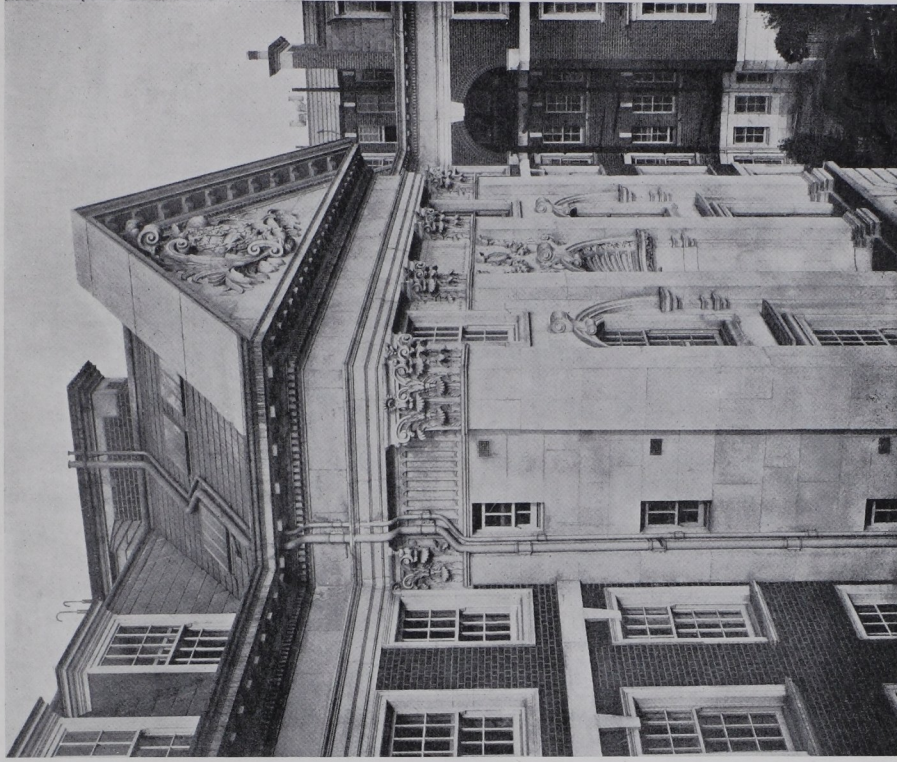


FLATS FOR MODERATE INCOMES: EXTERIOR DESIGN



HORNTON COURT, KENSINGTON, LONDON
 1. VIEW SHOWING AN ITALIAN GARDEN BUILT ON THE ROOF OF PROJECTING SHOPS. THE PATHS ARE OF YORK STONE, AND RED TILES ARE USED FOR THE REST OF THE WORK; THE DESIGN IS COMPLETED BY MEANS OF TREES IN TUBS, A SUNDIAL IN THE CENTRE AND A FOUNTAIN AT EACH END. 2. DETAIL OF THE CENTRE PEDIMENT. THE PARTY WALL GOES UP THE CENTRE AND IS MASKED BY THE NICHE. SEE PAGE 44



HORNTON COURT, KENSINGTON, LONDON.
 2. DETAIL OF THE CENTRE PEDIMENT. THE PARTY WALL GOES UP THE CENTRE AND IS MASKED BY THE NICHE. SEE PAGE 44

F. S. Chesterton and J. D. Coleridge, Architects