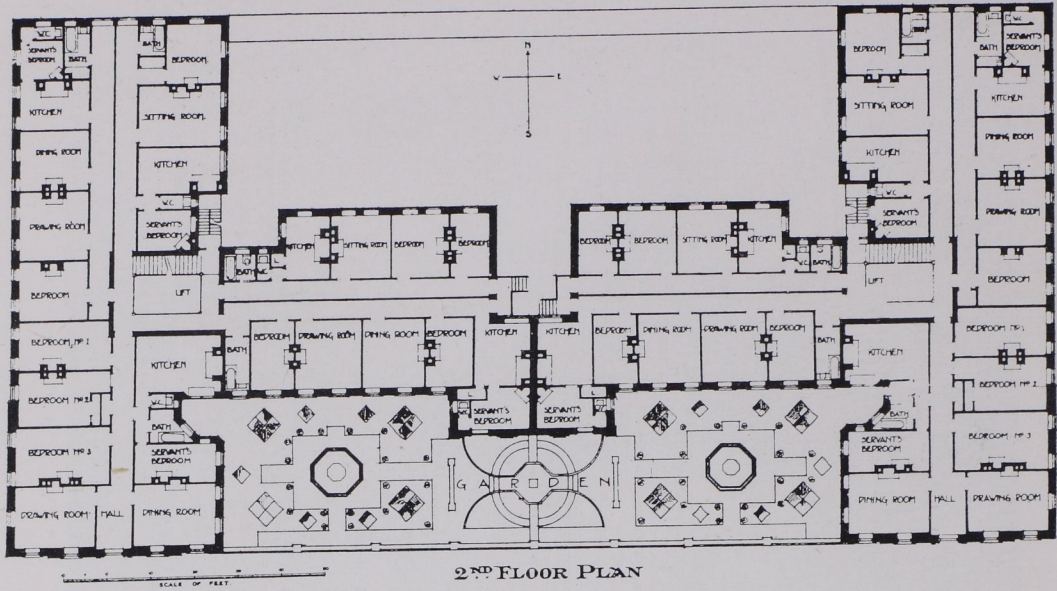


FLATS FOR MODERATE INCOMES: PLANNING AND EXTERIOR DESIGN



HORTON COURT, KENSINGTON, LONDON. SECOND FLOOR PLAN AND THE FRONT TO KENSINGTON HIGH STREET. THE MATERIALS ARE ENGLISH RED BRICKS, PALOTTE STONE FROM FRANCE, WITH PORTLAND STONE FOR THE GROUND FLOOR. THE SUITES OF ROOMS ARE DESIGNED FOR DIFFERENT INCOMES, SOME BEING SMALL AND OTHERS LARGER. THE RENTS, INCLUDING RATES AND TAXES, RUN FROM £90 TO £210 PER ANNUM. NOTE THE GARDEN TERRACE ABOVE THE SHOPS, THE ABSENCE OF AN AREA, AND THE DIRECT WINDOW-VENTILATION GIVEN TO EACH CORRIDOR

F. S. Chesterton and J. D. Coleridge, Architects