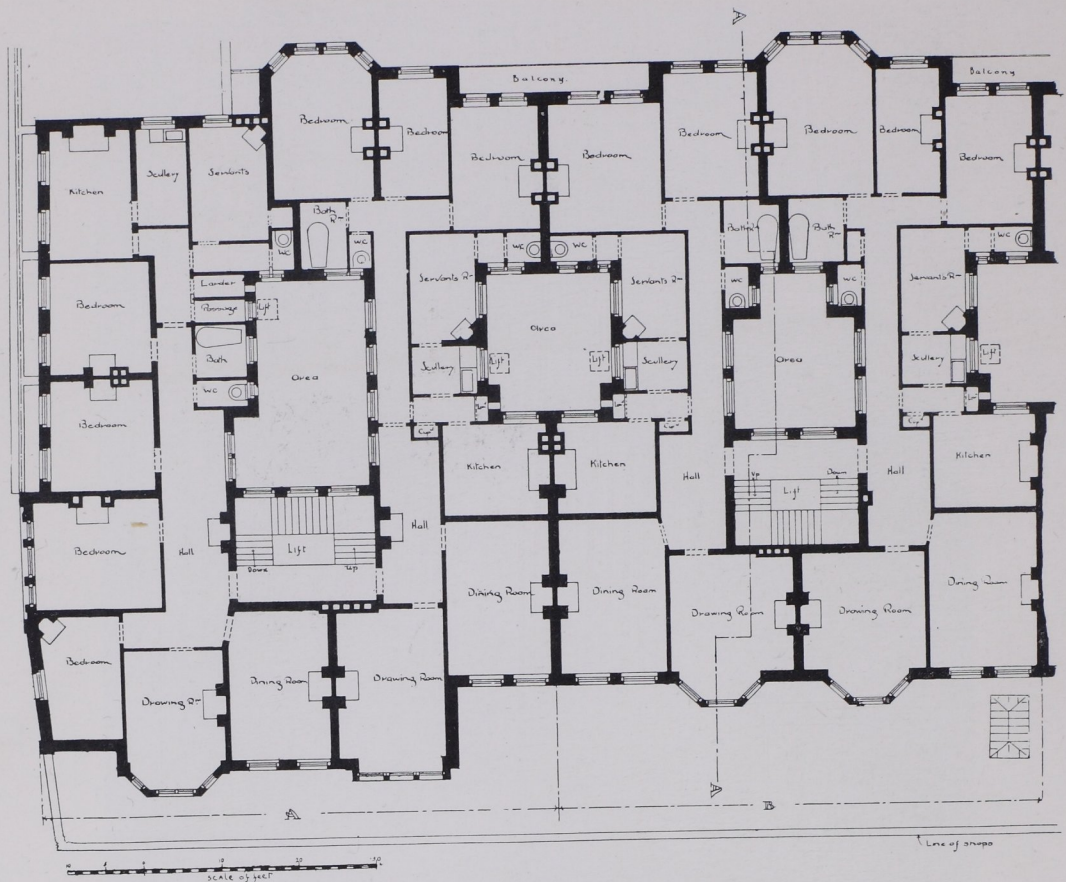


FLATS FOR THE WELL-TO-DO: PLANNING



ST. GEORGE'S TERRACE, GLOUCESTER ROAD, LONDON. SEE THE LARGE ILLUSTRATION IN COLOUR BETWEEN PAGES 40 AND 41. THIS GROUP OF BUILDINGS CONTAINS FIVE BLOCKS OF FLATS, AND ON EACH FLOOR IN ALL THE BLOCKS THERE ARE TWO SUITES OF ROOMS, SO ARRANGED THAT THEY CAN BE UNITED INTO ONE LARGE FAMILY SUITE. THE PLAN ON THIS PAGE REPRESENTS FOUR FLATS ON THE FIRST FLOOR. THE KITCHENS ARE WELL PLACED IN THEIR RELATION TO THE OTHER ROOMS IN THE SERVICE QUARTERS. THESE FLATS ARE NOW BEING BUILT; THE RENTS, INCLUDING RATES AND TAXES, WILL RUN FROM £200 TO £250 A YEAR

Paul Hoffmann, Architect