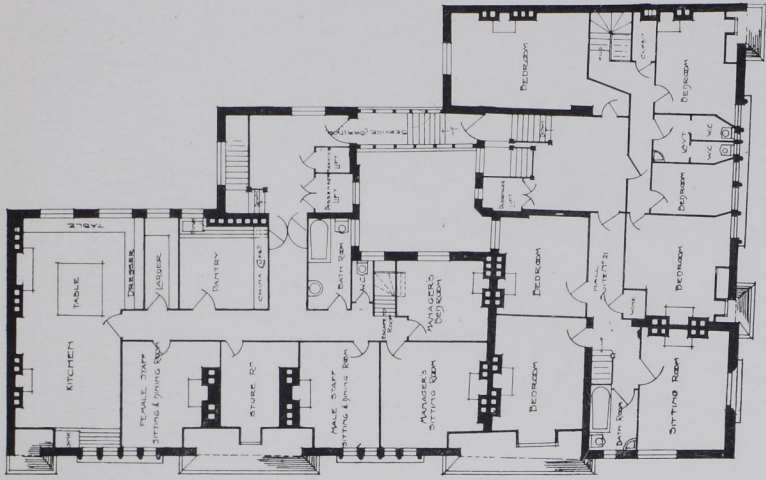
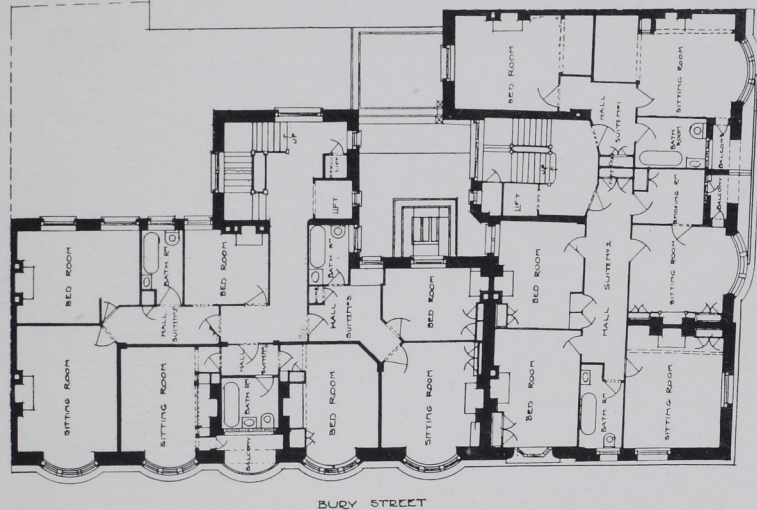
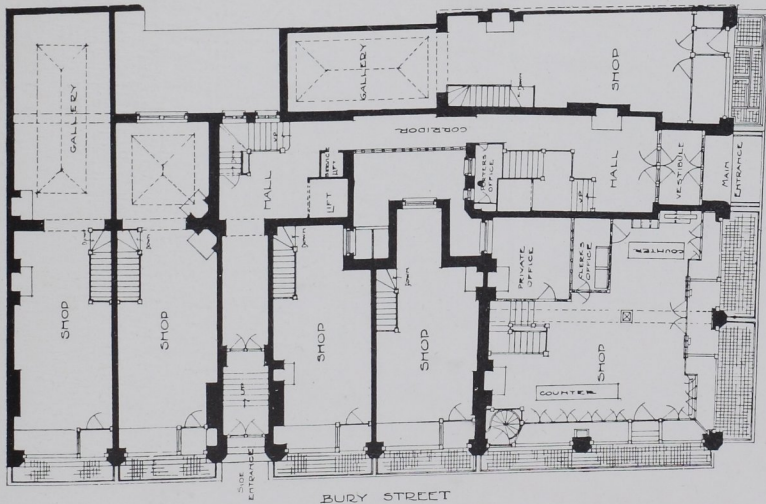


BACHELORS' FLATS, WITH SHOPS ON THE GROUND FLOOR



GROUND FLOOR

FIRST FLOOR

FIFTH FLOOR

MARLBOROUGH CHAMBERS, JERMYN STREET, LONDON, W. THESE ARE GOOD EXAMPLES OF PLANNING IN A BLOCK OF FLATS FOR WEALTHY BACHELORS. THE SUITES ON THE DIFFERENT FLOORS VARY LITTLE IN THE SCHEME OF THEIR ARRANGEMENT, SO THAT THE PLAN OF THE FIRST FLOOR REPRESENTS THE OTHER STORIES ALSO. TO EVERY DETAIL THE GREATEST CARE HAS BEEN GIVEN. EACH FLAT HAS A TELEPHONE, AND EACH TENANT CAN DINE AS COMFORTABLY AT HOME AS IN ANY CLUB OR RESTAURANT. THE KITCHEN, AND THE EXCELLENT ROOMS FOR THE WORKING STAFF, ARE SHOWN IN THE PLAN OF THE FIFTH FLOOR. PHOTOGRAPHIC VIEWS OF THE INTERIOR ARE PRINTED ON PAGES 36 AND 38, AND THE COLOUR-PLATE FACING PAGE 36 IS A VIEW OF THE BUILDING FROM OUTSIDE. THE RENTS OF THE FLATS UNFURNISHED RANGE FROM £150 TO £450 PER ANNUM, INCLUDING RATES AND TAXES

Reginald Morphew, Architect