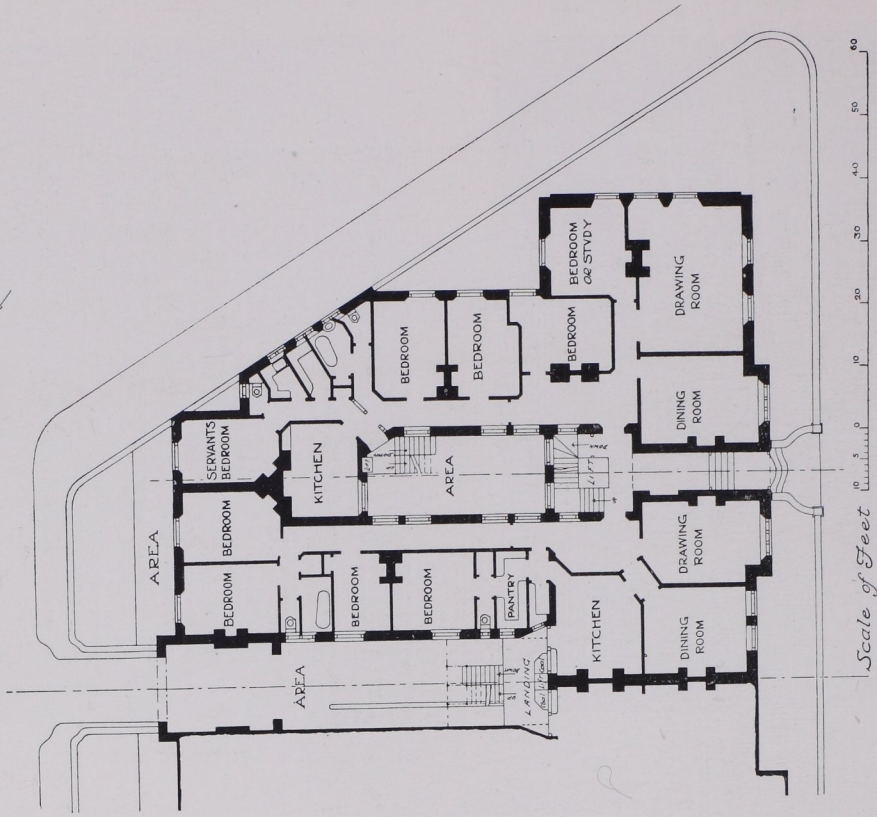
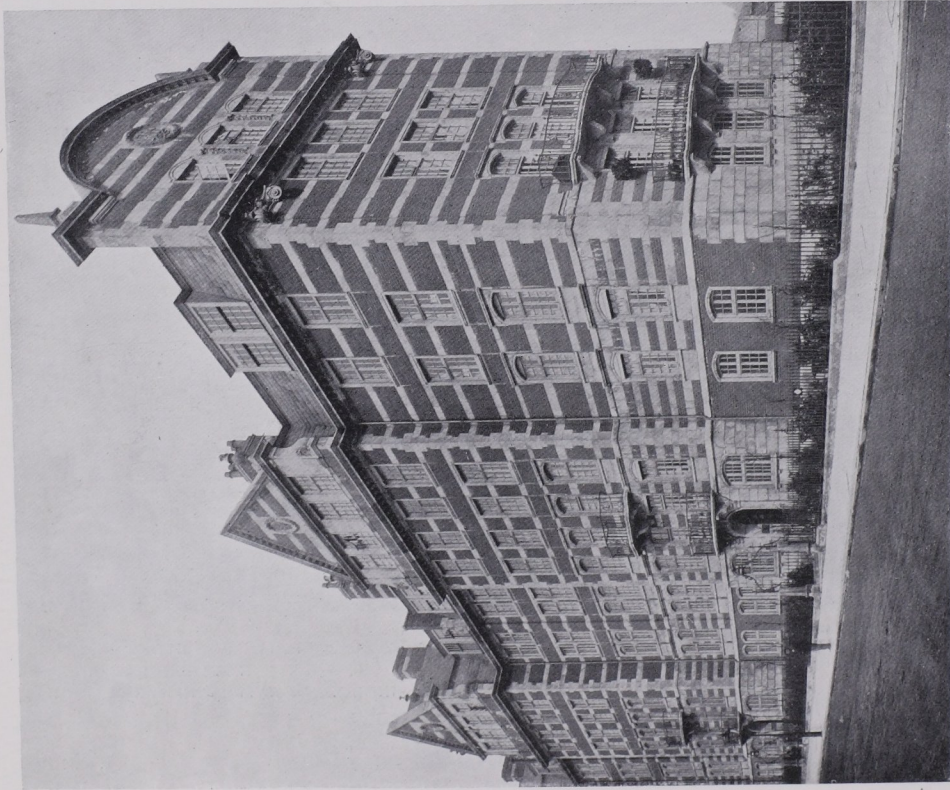


FLATS FOR THE WELL-TO-DO: PLANNING AND EXTERIOR DESIGN



HANOVER HOUSE, ST. JOHN'S WOOD, LONDON. THESE FLATS ARE BUILT OF RED BRICK AND PORTLAND STONE, WITH A ROOF OF GREY-GREEN SLATES. THE CARVING WAS CARRIED OUT BY T. E. JAGO. THE PLAN REPRESENTS TWO SUITES OF ROOMS, WITH THE CORRIDOR OF EACH FLAT LIGHTED FROM AN AREA. THE KITCHENS ARE WELL PLACED IN THEIR RELATION TO THE BEDROOMS AND OFFICES OF THE SERVANTS' QUARTERS. THE RENTS, INCLUDING RATES AND TAXES, RANGE FROM £180 TO £240 PER ANNUM

E. P. Warren, F.R.I.B.A., F.S.A., Architect