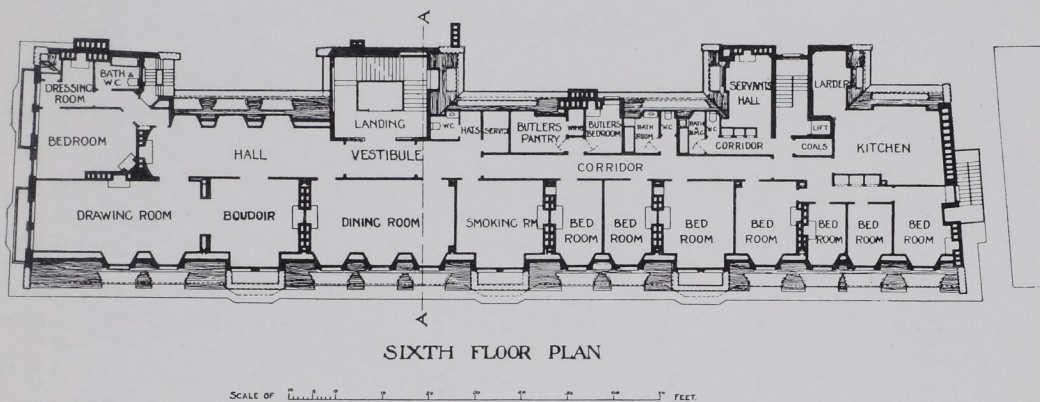
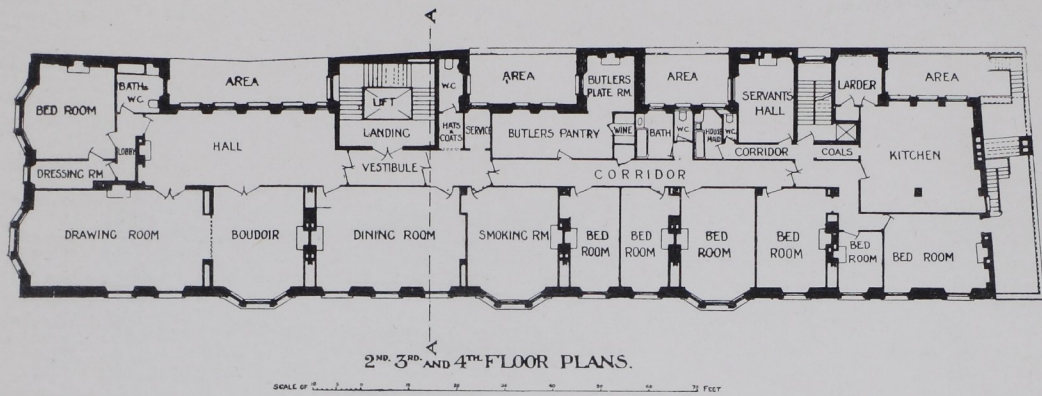


## PALATIAL FLATS: PLANNING



GLOUCESTER HOUSE, PICCADILLY, LONDON

OTHER PLANS ARE GIVEN ON THE OPPOSITE PAGE

THE SITE HAS A FRONTAGE TO PICCADILLY OF ABOUT 52 FEET, AND TO PARK LANE OF 230 FEET. IT PRESENTS A TOTAL SUPERFICIAL AREA OF ABOUT 13,000 FEET. THE GROUND FLOOR IS TO BE OCCUPIED PARTLY BY A BANK AND PARTLY BY SHOPS. THE FRAMEWORK OF THE BUILDING IS OF STEEL WITH BRICK BACKING, AND TO THIS IS ADDED A SURFACE OF CARRARA WARE HAVING THE COLOUR OF OLD IVORY AND FINISHED WITH AN EGG-SHELL GLAZE. THE MANSARD ROOF IS COVERED WITH SPANISH TILES, HAND-MADE AND GLAZED; THEIR COLOUR IS A FINE GREEN. ON THE GROUND FLOOR IS THE MAIN ENTRANCE HALL, A NOBLE ROOM MEASURING 35 FEET BY 50 FEET. EACH FLOOR IS GIVEN TO ONE FLAT WITH ROOMS OF SPLENDID SIZE AND PROPORTION. THE VESTIBULE ENTRANCE, WITH A CLOAK ROOM ADJOINING, IS 20 FEET BY 8 FEET 6 INCHES; THE INNER HALL WITH A FIREPLACE, 32 FEET BY 16 FEET; THE DRAWING ROOM, 40 FEET BY 20 FEET; THE BOUDOIR, 24 FEET BY 18 FEET 6 INCHES; AND THE DINING-ROOM, 30 FEET BY 23 FEET. THERE IS ALSO A BILLIARD ROOM, 24 FEET 6 INCHES BY 19 FEET 6 INCHES. BETWEEN THE DRAWING-ROOM AND BOUDOIR ARE SLIDING DOORS, SO THAT A BALLROOM NEARLY 70 FEET LONG IS EASILY OBTAINED. EACH FLAT HAS MANY BEDROOMS, 3 BATHROOMS, A SERVANTS' HALL, HOUSEKEEPER'S ROOM, A BUTLER'S PANTRY AND BEDROOM, SERVICE ROOM, KITCHEN, SCULLERY, AND ALL THE USUAL ACCESSORIES OF A TOWN HOUSE. THESE FLATS, THE LARGEST IN LONDON, ARE NOW IN THE HANDS OF MESSRS. PATMAN AND FOTHERINGHAM, BUILDERS; THE RENTS, INCLUDING RATES AND TAXES, WILL RANGE FROM £1,500 TO £3,000 A YEAR

T. E. Collcutt, P.R.I.B.A. and Stanley Hamp, A.R.I.B.A.  
Architects