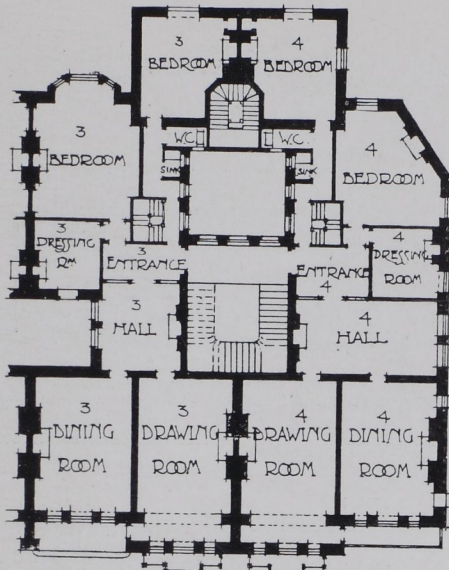
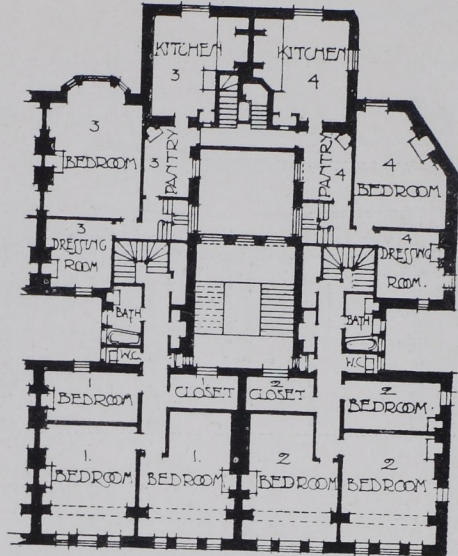


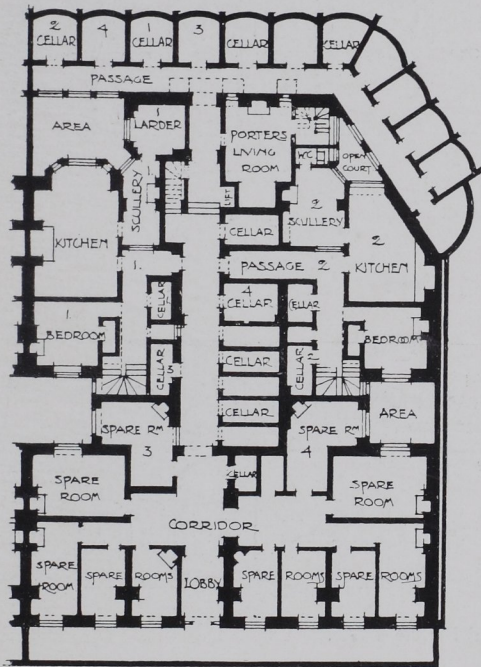
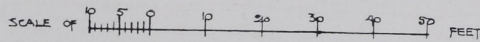
MAISONNETTE FLATS



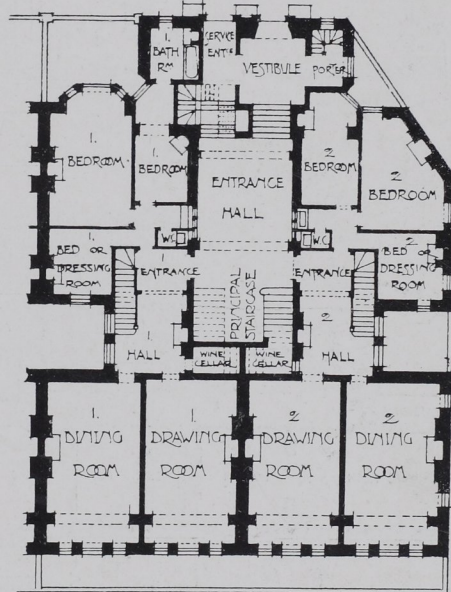
FIRST FLOOR PLAN



MEZZANINE PLAN



BASEMENT PLAN



GROUND FLOOR PLAN

THE ALBERT HALL MANSIONS, LONDON; EXAMPLES OF PLANNING. SEE PAGE 26. THESE MAISONNETTE FLATS WERE BUILT ABOUT THIRTY YEARS AGO, AND BROUGHT INTO VOGUE A MEANS BY WHICH AN EXTRA FLOOR CAN BE PLACED BEHIND THE FRONT ROOMS. ON THE SECOND AND THIRD FLOORS THE FRONT ROOMS ARE VERY HIGH, ABOUT FIFTEEN FEET, LEAVING SPACE ENOUGH BEHIND FOR THREE STORIES OF GOOD BEDROOMS AND OFFICES. THE PLANS REPRESENT FOUR SUITES, AND THE ROOMS BELONGING TO EACH ARE NUMBERED

R. Norman Shaw, R.A., Architect