

- A. Erstes Pinakoid  $\{100\}$ .
- B. Zweites Pinakoid  $\{010\}$ .
- C. Drittes Pinakoid  $\{001\}$ .
- 1. Prismen erster Art  $\{okl\}$ .
- 2. Prismen zweiter Art  $\{hol\}$ .
- 3. Prismen dritter Art  $\{hko\}$ .
- 4. Bisphenoide  $\{hkl\}$  und  $\{hkl\bar{}$ .

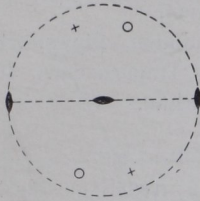


Fig. 120. Erzeugende Symmetrie der rhombisch-bisphenoidischen Klasse (2s).

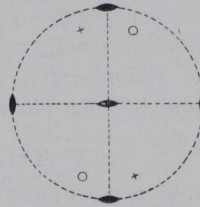


Fig. 121. Allgemeines rhombisch-bisphenoidisches Bauschema.

Beispiele für das rhombische System.

- Fig. 122. Staurolith. Bipyramidal  $b \{010\}$ ;  $c \{001\}$ ;  $m \{110\}$ ;  $r \{101\}$ .
- Fig. 123. Topas. Bipyramidal  $M \{110\}$ ;  $l \{120\}$ ;  $o \{111\}$ .
- Fig. 124. Schwespat. Bipyramidal.  $c \{001\}$ ;  $q \{011\}$ ;  $r \{102\}$ .
- Fig. 125. Schwefel. Bipyramidal.  $c \{001\}$ ;  $o \{111\}$ ;  $s \{113\}$ ;  $q \{011\}$ .
- Fig. 126. Resorzin. Pyramidal.  $p \{110\}$ ;  $r \{101\}$ ;  $r' \{101\}$ ;  $o' \{111\}$ .
- Fig. 127. Bittersalz. Bisphenoidisch.  $p \{110\}$ ;  $o \{111\}$ .
- Fig. 128. Stereographische Projektion der Fig. 125.

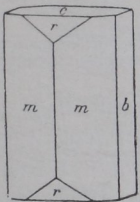


Fig. 122. Staurolith.

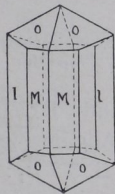


Fig. 123. Topas.

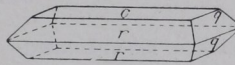


Fig. 124. Schwespat.

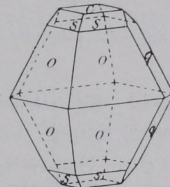


Fig. 125. Schwefel.

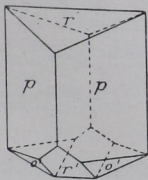


Fig. 126. Resorzin.

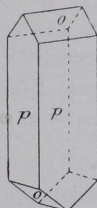


Fig. 127. Bittersalz.

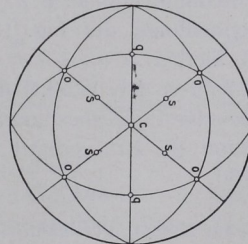


Fig. 128. Stereographische Projektion des Schwefels (Fig. 125).