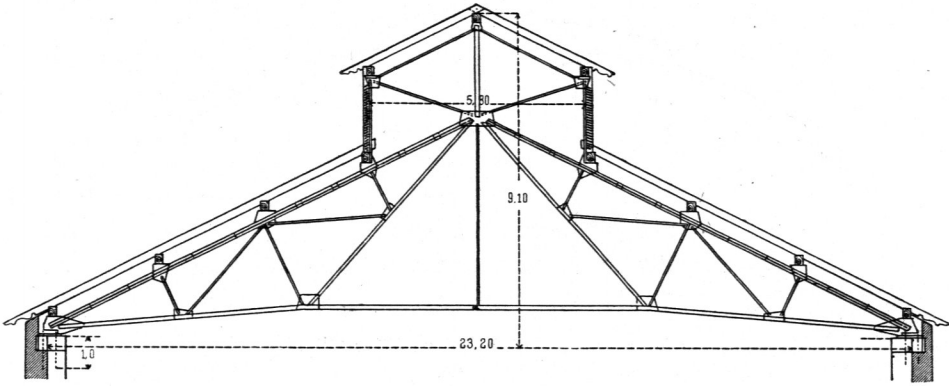


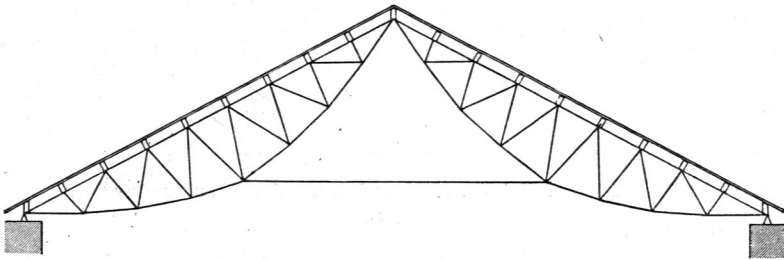
Fig. 428.



Vom Ofenhaus der dritten Dresdener Gasanstalt<sup>214)</sup>.

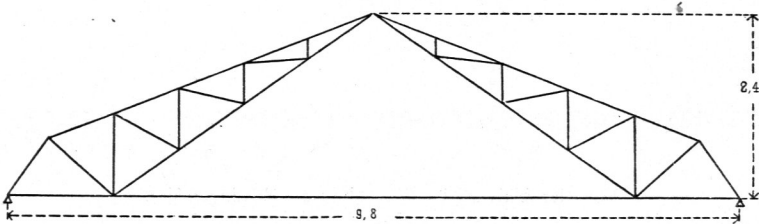
$\frac{1}{200}$  n. Gr.

Fig. 429.



Dachbinder-System *Arajol*<sup>215)</sup>.

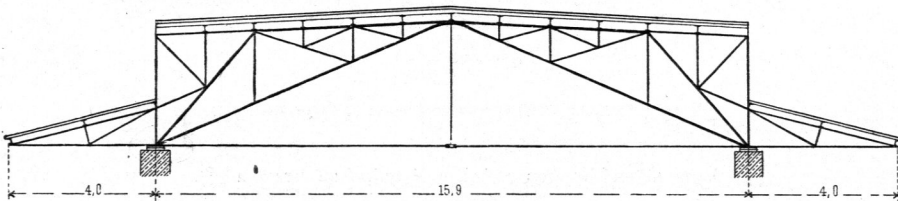
Fig. 430.



Vom Güterfchuppen auf dem Bahnhof zu Hannover.

$\frac{1}{100}$  n. Gr.

Fig. 431.



Vom neuen Packhof zu Berlin.

$\frac{1}{200}$  n. Gr.

<sup>214)</sup> Nach: *Zeitschr. d. Arch.- u. Ing.-Ver. zu Hannover* 1881, Bl. 858.

<sup>215)</sup> Nach: *Nouv. annales de la confr.* 1892, Bl. 46-47.