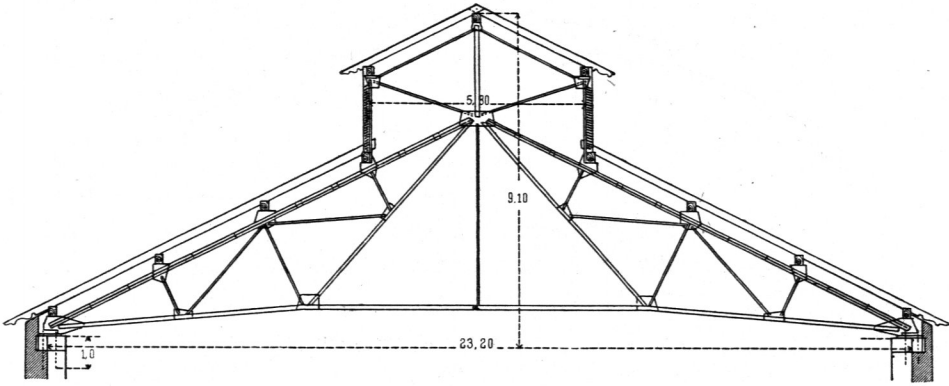
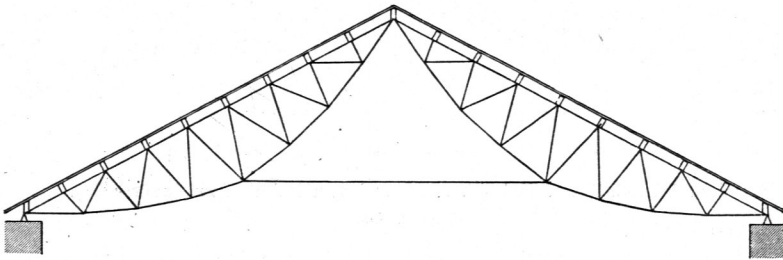


Fig. 428.



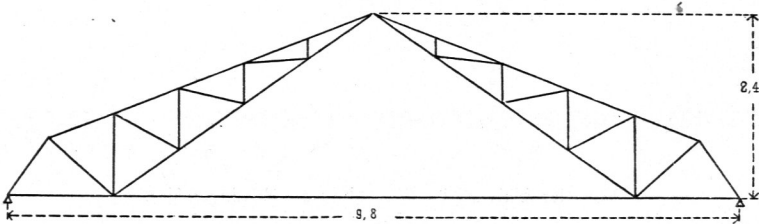
Vom Ofenhaus der dritten Dresdener Gasanstalt²¹⁴⁾.
 $\frac{1}{200}$ n. Gr.

Fig. 429.



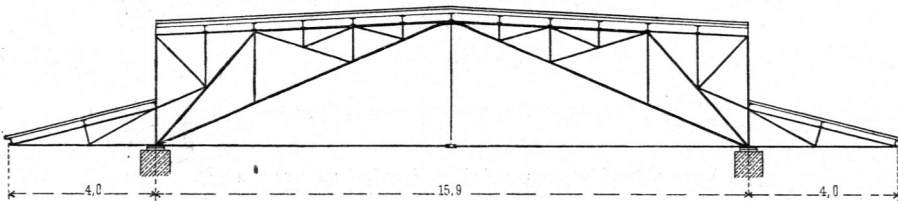
Dachbinder-System *Arajol*²¹⁵⁾.

Fig. 430.



Vom Güterfchuppen auf dem Bahnhof zu Hannover.
 $\frac{1}{100}$ n. Gr.

Fig. 431.



Vom neuen Packhof zu Berlin.
 $\frac{1}{200}$ n. Gr.

²¹⁴⁾ Nach: *Zeitschr. d. Arch.- u. Ing.-Ver. zu Hannover* 1881, Bl. 858.

²¹⁵⁾ Nach: *Nouv. annales de la confr.* 1892, Bl. 46-47.