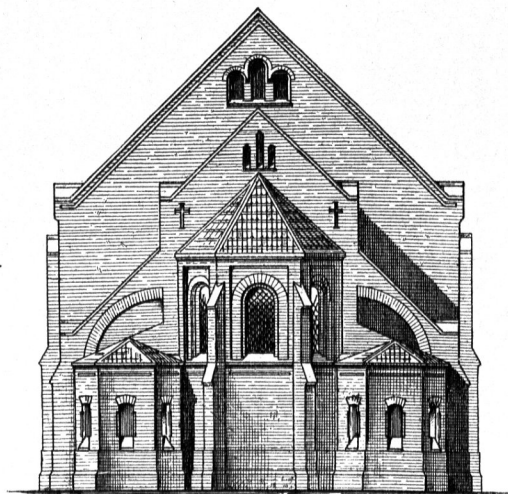


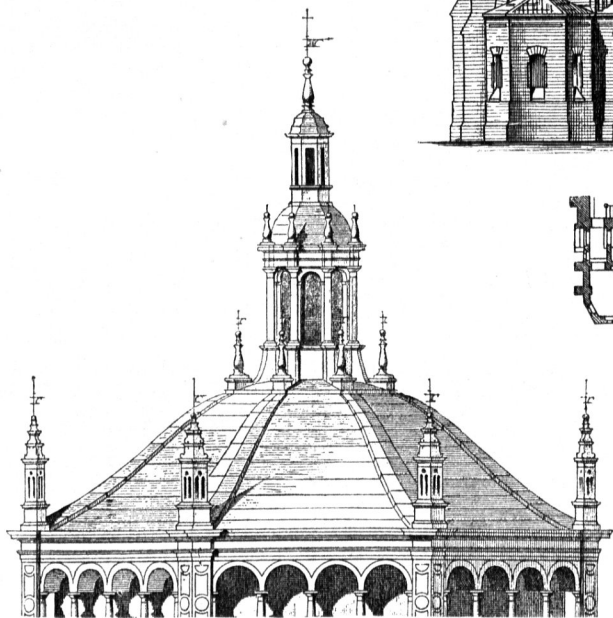
Fig. 106.

$\frac{1}{250}$,
bezw. $\frac{1}{500}$ n. Gr.



Von
der Kirche
zu Hoff⁷⁰).

Fig. 107.



Von der Kirche Sta. Maria zu Bufto-Arfigio⁶⁸).

$\frac{1}{200}$ n. Gr.

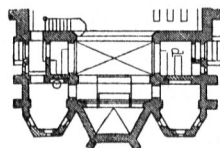
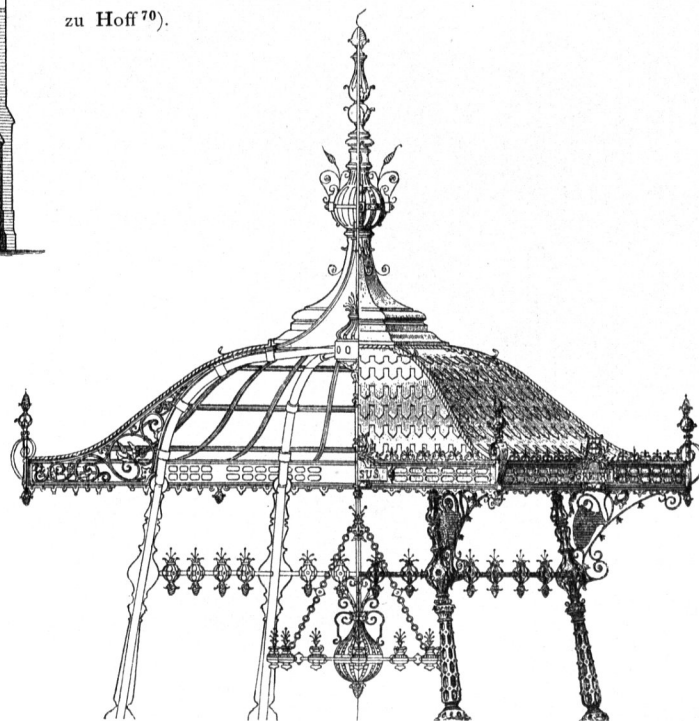


Fig. 108.



Von einem Kiosk zu Brüffel⁶⁹).

$\frac{1}{100}$ n. Gr.