

Fig. 37.

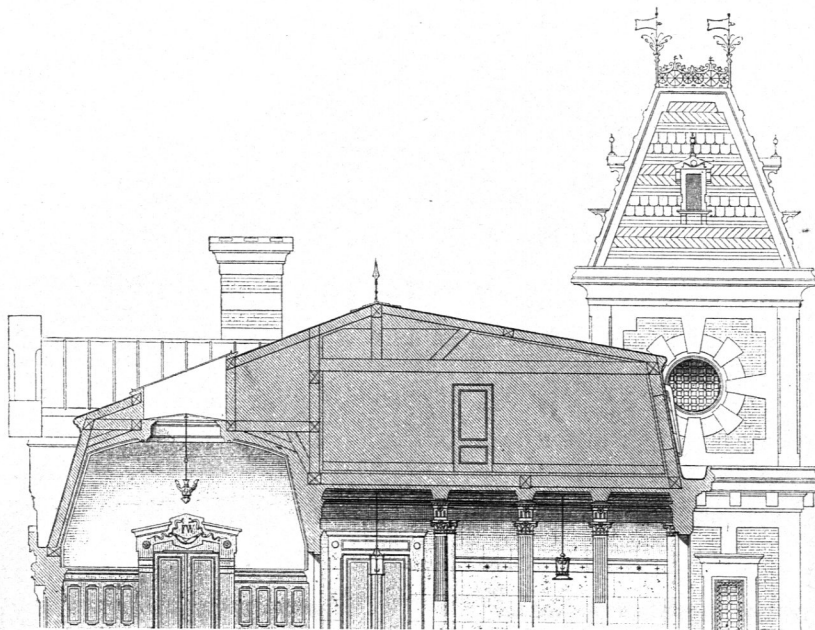
Von einem Künstlerheim zu Paris²⁶⁾. $\frac{1}{150}$ n. Gr.

Fig. 38.

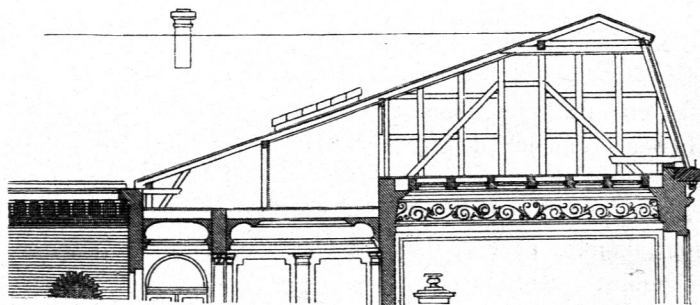
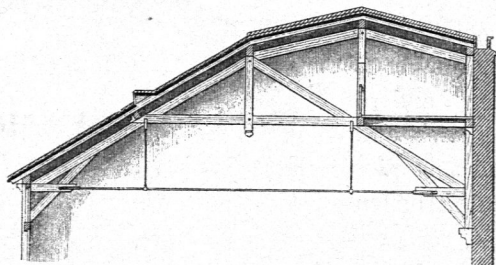
Vom Kreishaus zu Wittenberg²⁷⁾. $\frac{1}{200}$ n. Gr.

Fig. 39.

Vom Dépôt des ponts et chaussées zu Paris²⁸⁾. $\frac{1}{200}$ n. Gr.