

Abb. 185. Krumau i. Böh. Jubiläums-Krankenhaus f. 54 Betten, Waschküche.

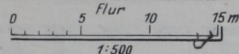
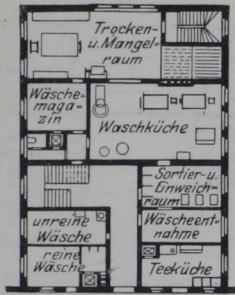


Abb. 186. Schwelm, Tuberkulose-Krankenhaus für 100 Betten, Waschküche.

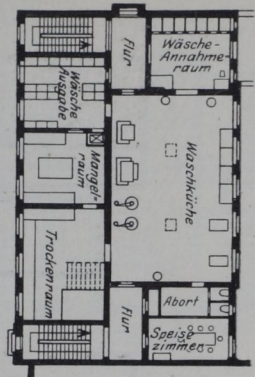


Abb. 187. Cottbus, städt. Krankenhaus für 323 Betten, Waschküche.

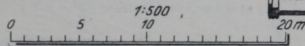
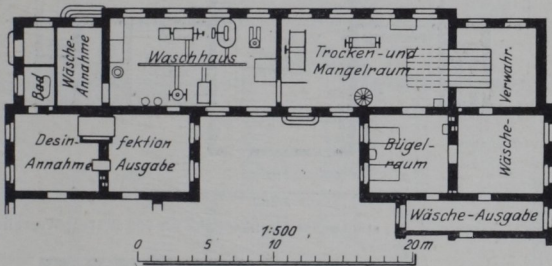


Abb. 188. Wien, Wilhelminenspital für 427 Betten, Waschküche.

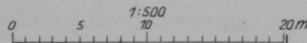
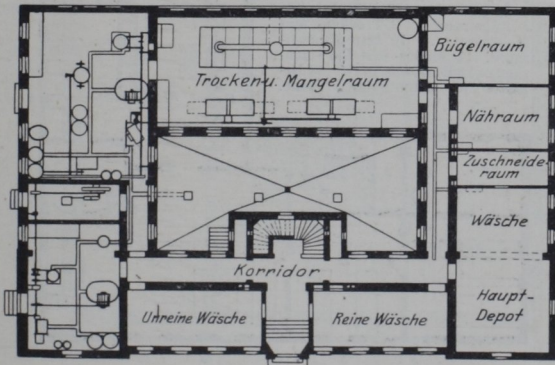


Abb. 189. Wien, Kaiser-Franz-Josefs-Spital für 726 Betten, Waschhaus.