

Laufwinde zum elektrischen Drehkran auf Taf. 39.

Duisburger-Maschinenbau-Aktien-Gesellschaft, vorm. Bechler & Neumann.

Maximallast 6000 kg.

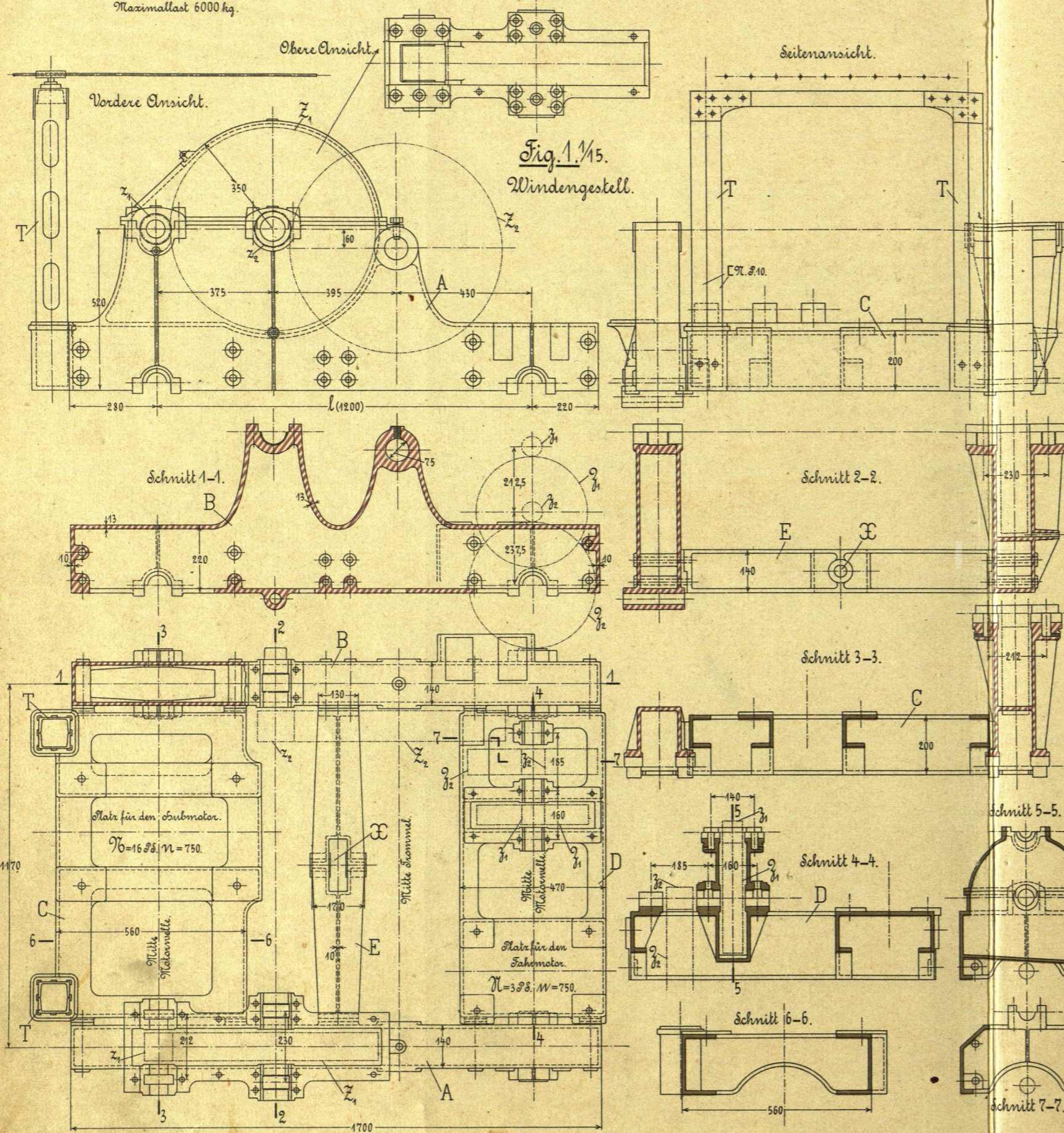


Fig. 2 1/5. Subwerk der Winde.

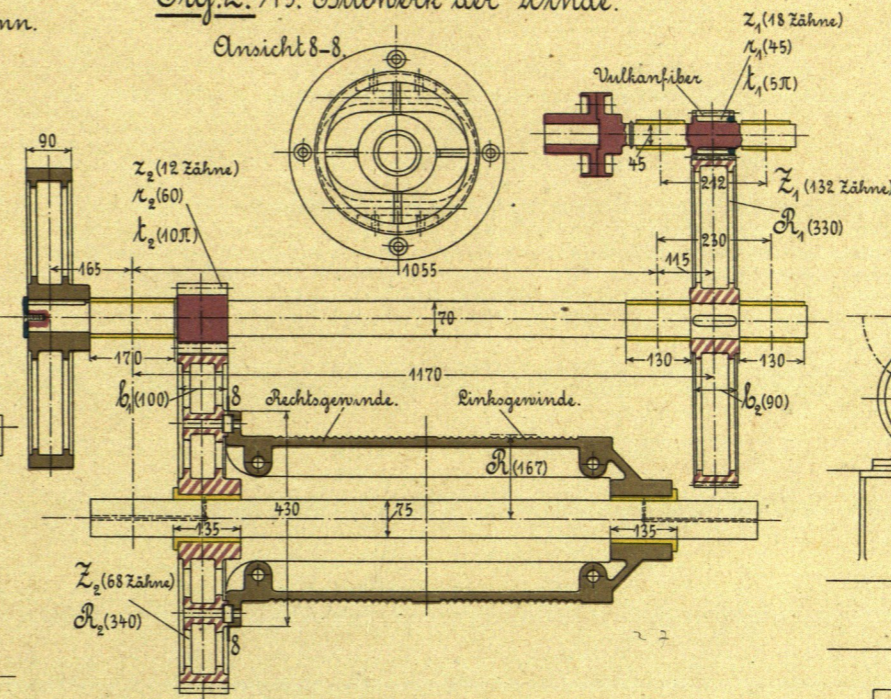


Fig. 3 1/5. Bremse zum Subwerk.

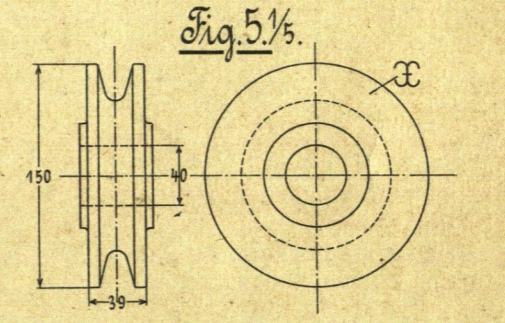
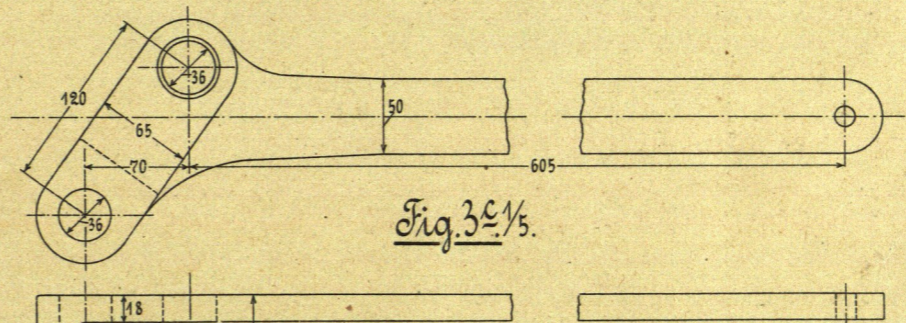
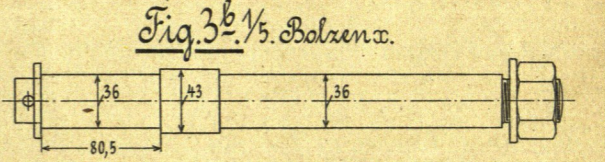
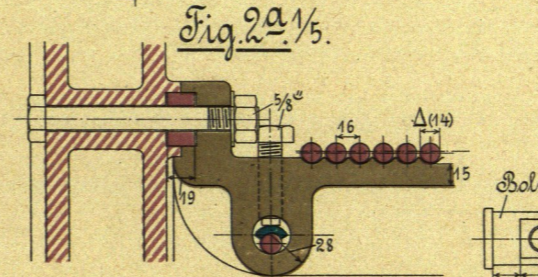
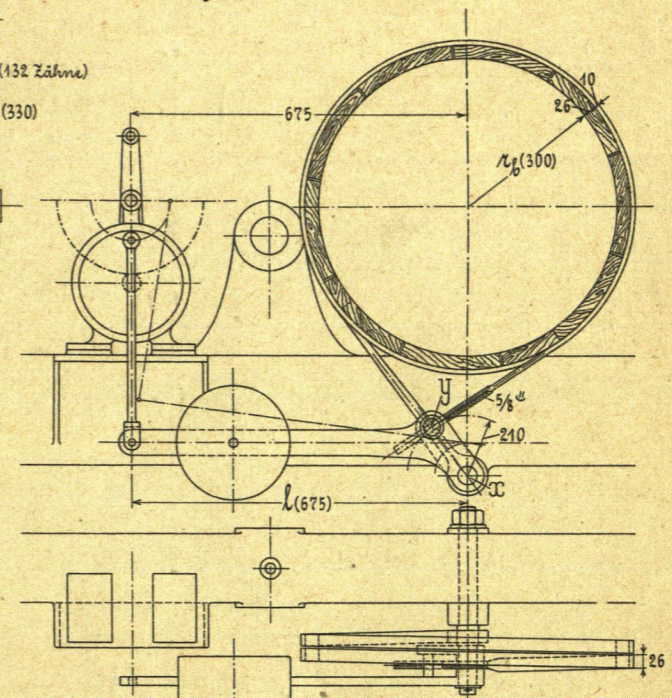


Fig. 4 1/5. Fahrwerk der Winde.

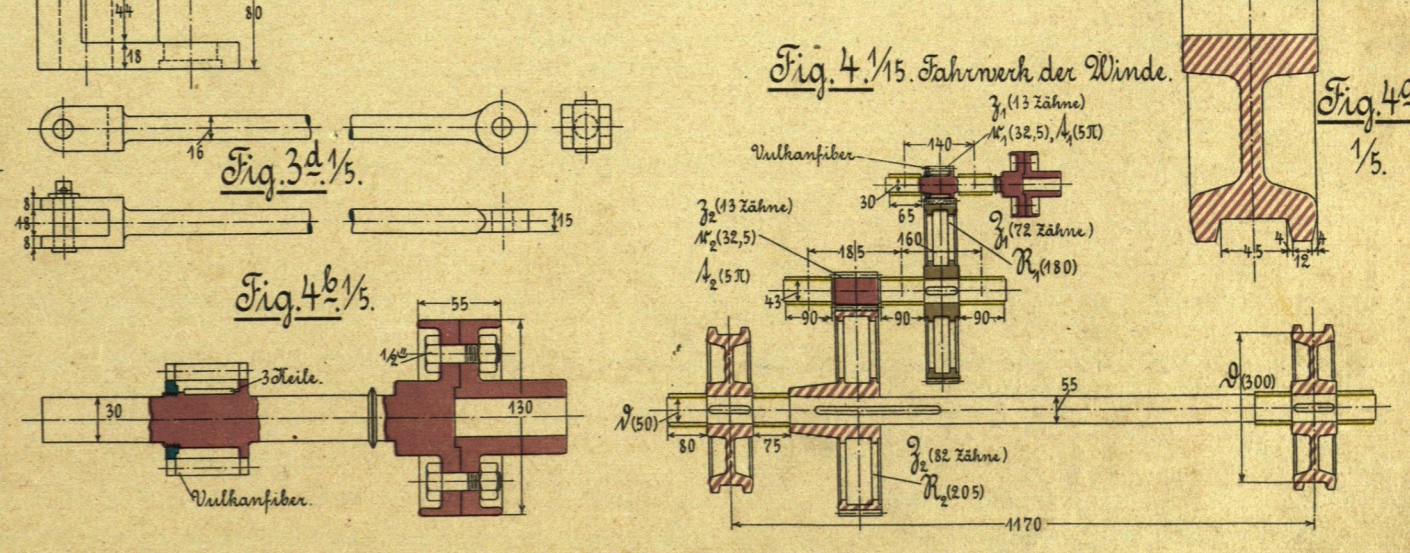


Fig. 4a 1/5.

