

Elektrische Subwinde zum Drehkran auf Taf. 34.

Merck & Samsbrock, Altona-Elmberg.

Fig. 1. 1/15.

Rädervorgelege.

$\lambda_1 = 114, z_1 = 19; R_1 = 390, Z_1 = 65; k_1 = 12\pi.$

$\lambda_2 = 112, z_2 = 16; R_2 = 392, Z_2 = 56; k_2 = 14\pi.$

$\lambda_3 = 110, z_3 = 11; R_3 = 520, Z_3 = 52; k_3 = 20\pi.$

$\lambda_x = 198, z_x = 22; R_x = 432, Z_x = 48; k_x = 18\pi.$

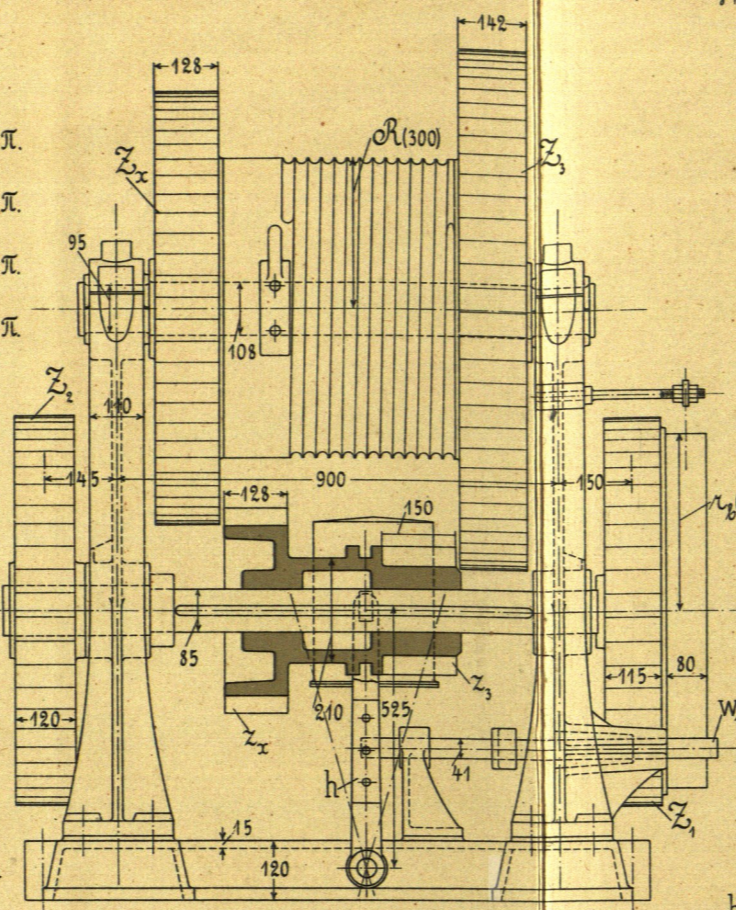
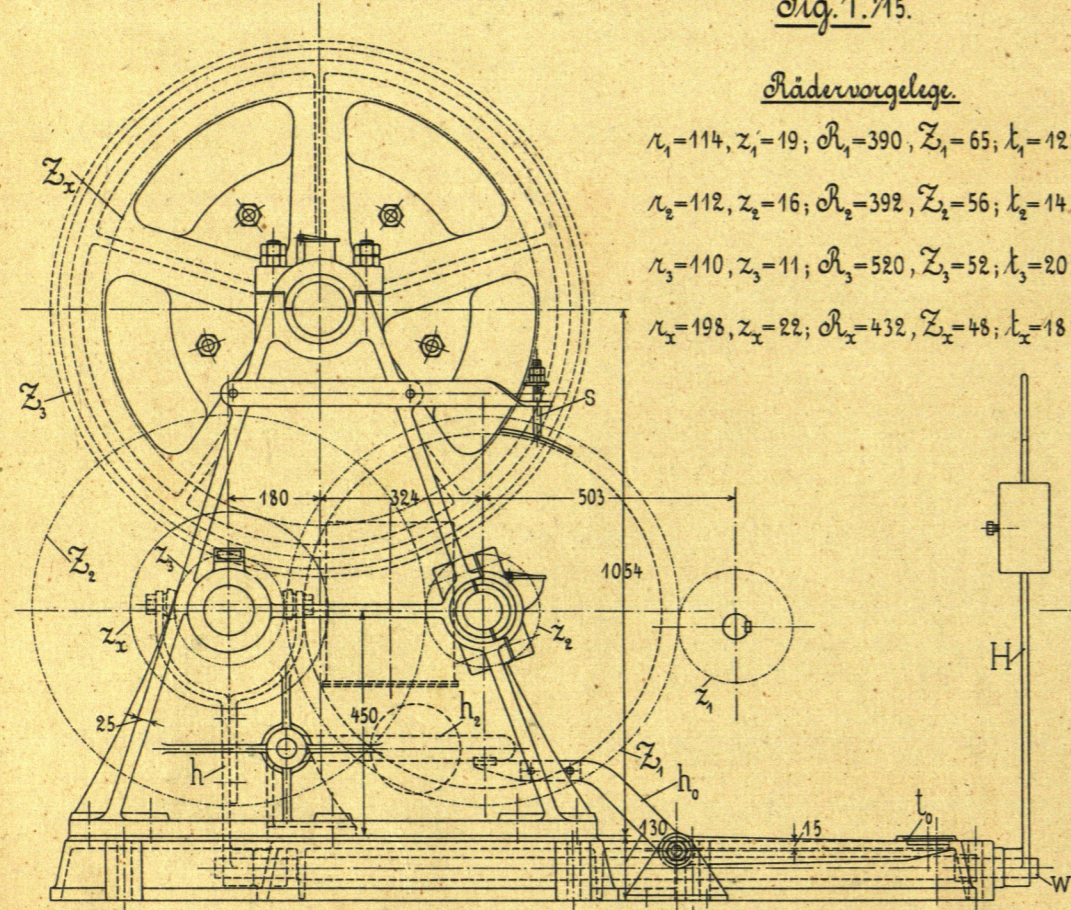
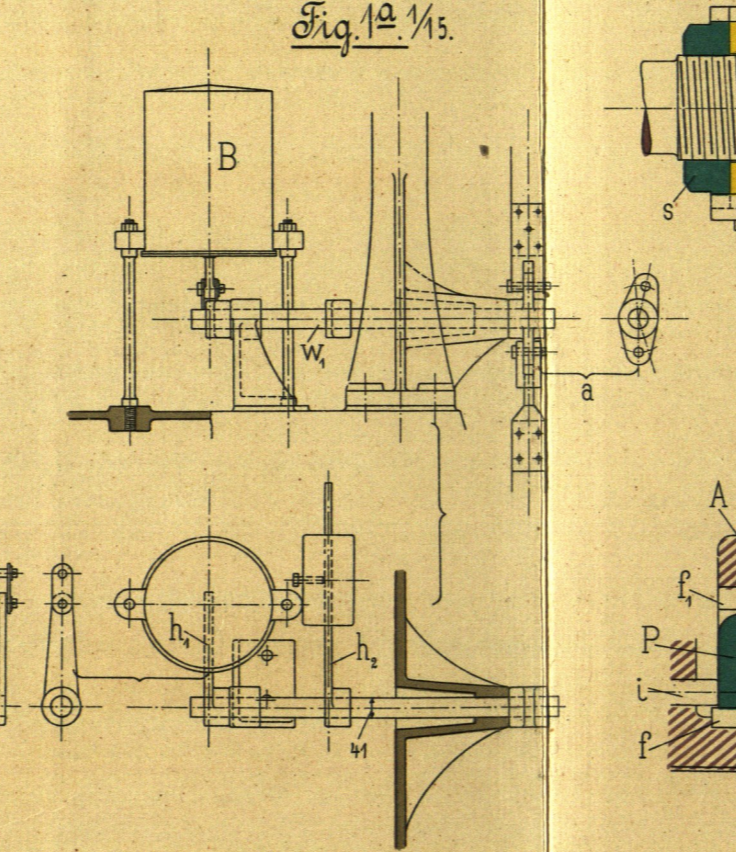
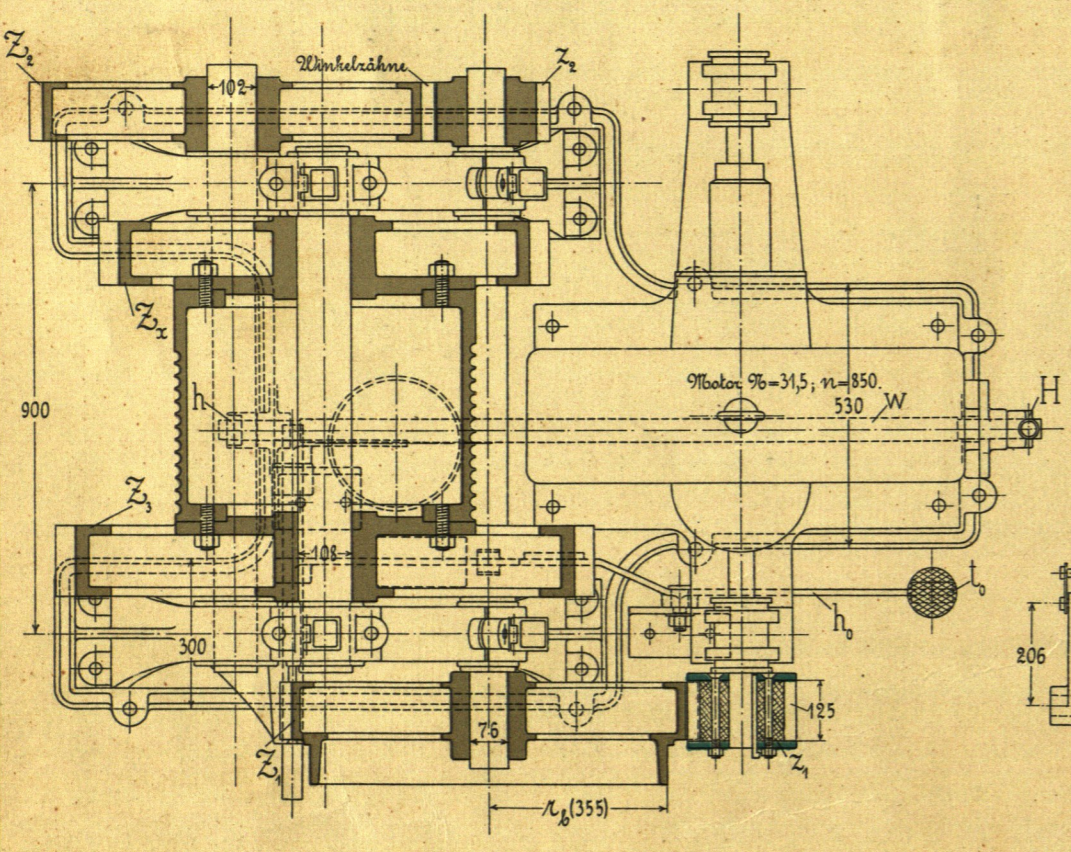
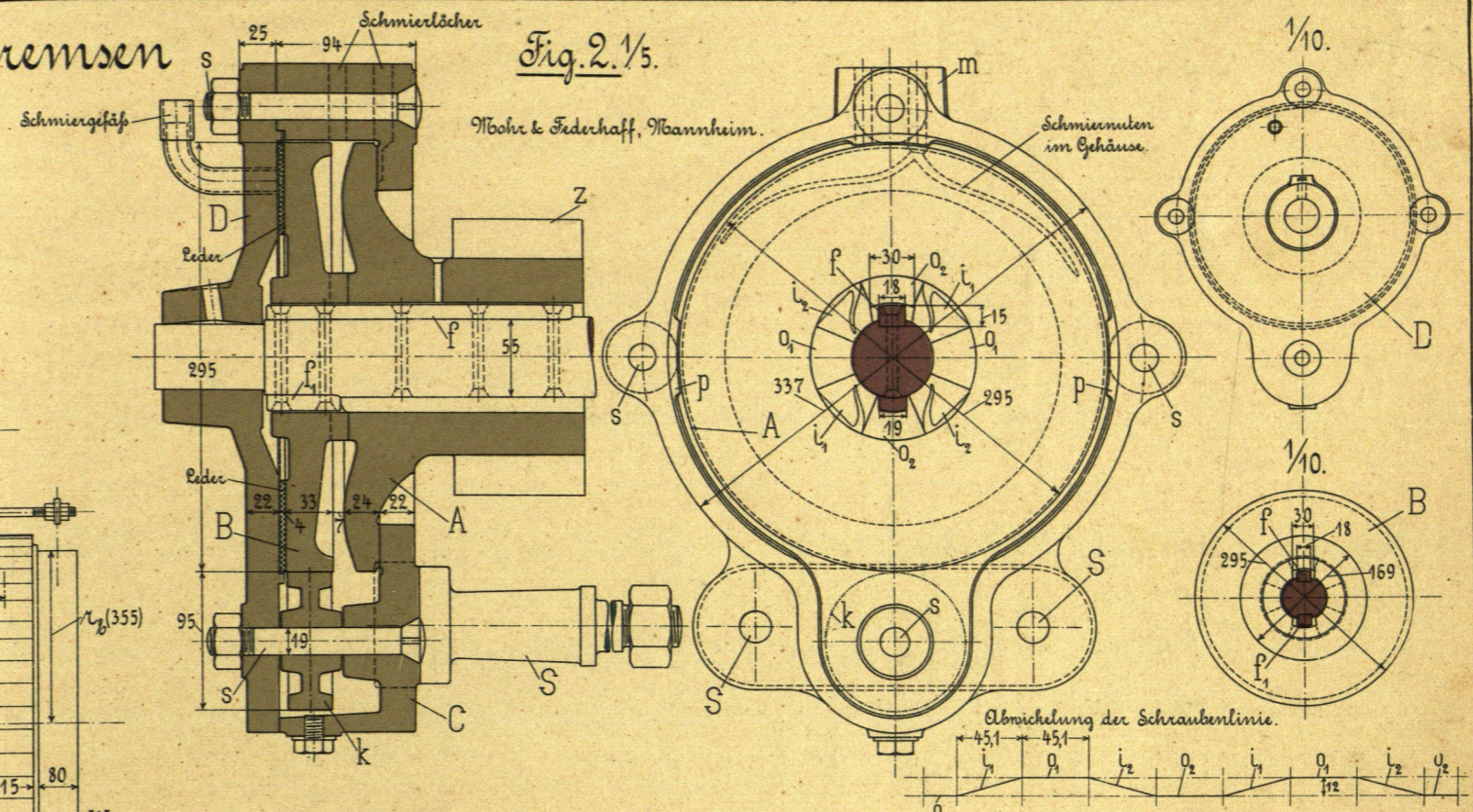


Fig. 1a. 1/15.



Bremsen

Fig. 2. 1/5.



Vereinigte Maschinenfabrik Nürnberg u. Maschinenbau-Gesellschaft Augsburg.

Fig. 3. 1/10.

