

# Drehkran für Sandbetrieb

Maximallast 7500 kg.

Fig. 1. 1/50.

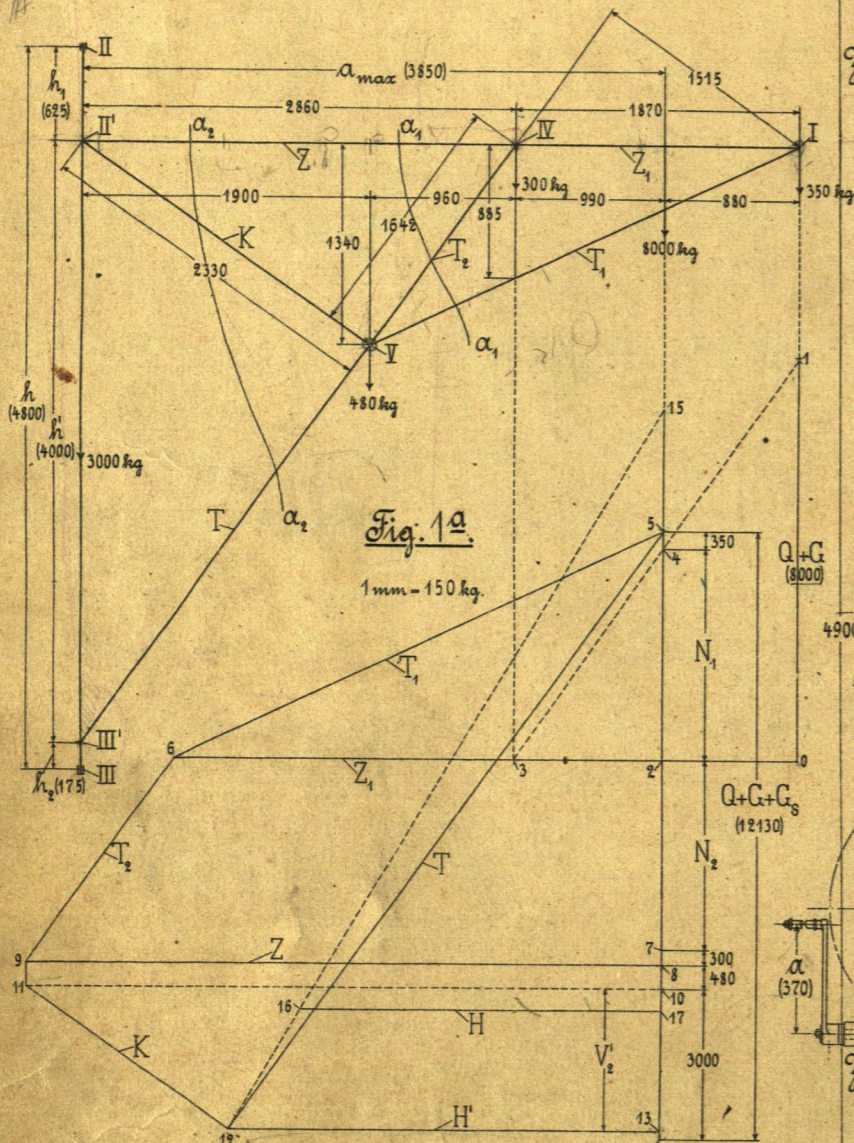


Fig. 1a.

1mm = 150 kg.

Fig. 1b.

1mm = 150 kg.

## Rädervorgelege

Lastheben.

- $Z_1 - 22, r_1 - 91, t_1 - 26; Z_1 - 75, R_1 - 310,35.$
- $Z_x - 32, r_x - 132,5, t_x - 26; Z_x - 65, R_x - 269.$
- $Z_2 - 12, r_2 - 66,85, t_2 - 35; Z_2 - 85, R_2 - 473,5.$
- $Z_3 - 11, r_3 - 96,3, t_3 - 55; Z_3 - 56, R_3 - 490,2.$

Lastfahren.

- $\beta_1 - 14, r_1 - 53,75, A_1 - 25; \beta_1 - 49, R_1 - 195.$
- $\beta_2 - 14, r_2 - 78, A_2 - 35; \beta_2 - 21, R_2 - 117.$
- $\beta_3 - \beta_2, A_3 - A_2; \beta_3 - 56, R_3 - 312; \beta_3 - 85, R_3 - 473,5.$

Fig. 2. 1/25.

