

Elektrischer Laufkran mit 3 Motoren.

Lacini, Nathan & Co, Mailand.

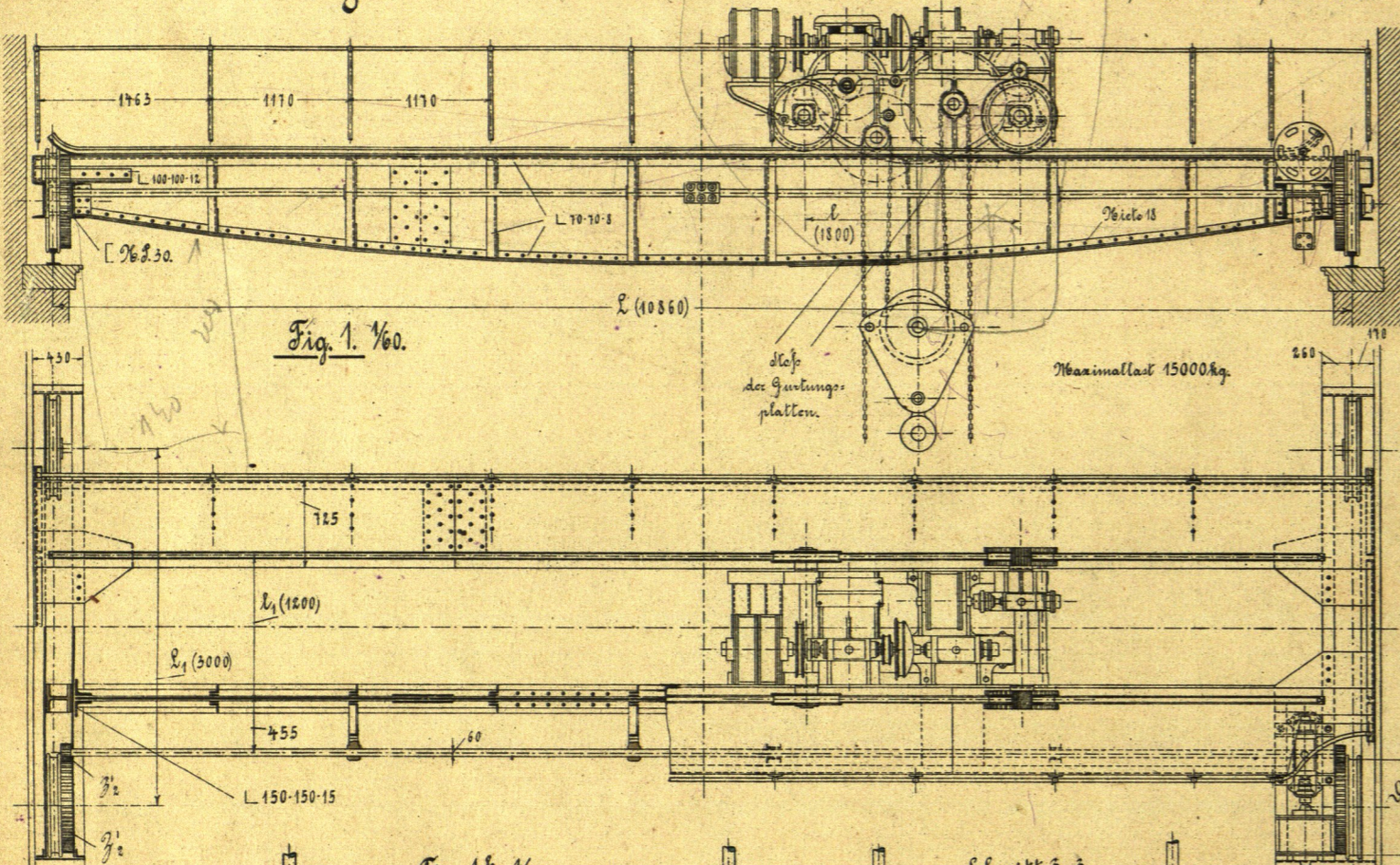
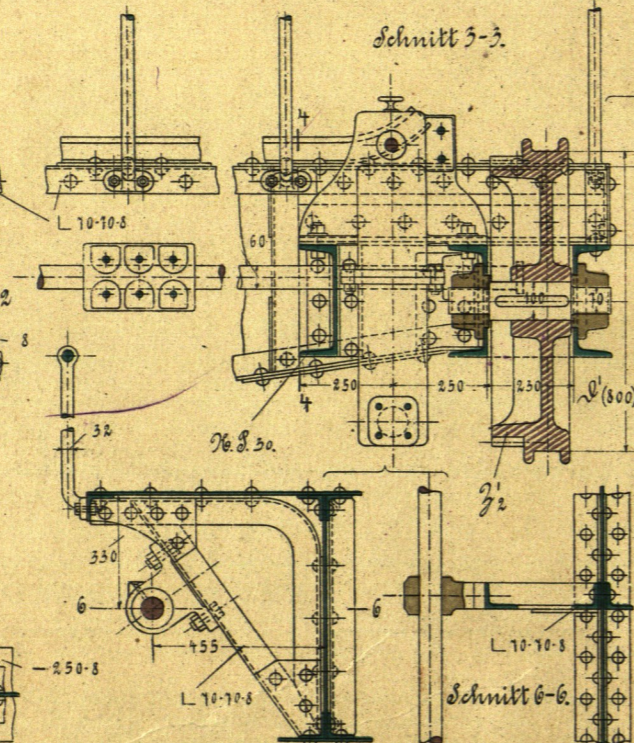
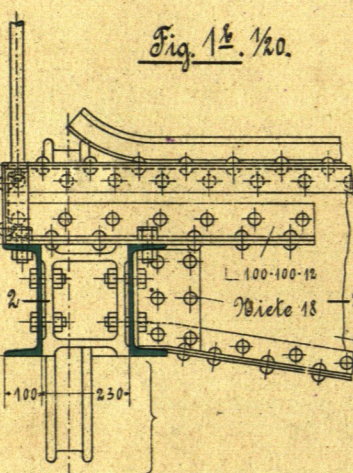
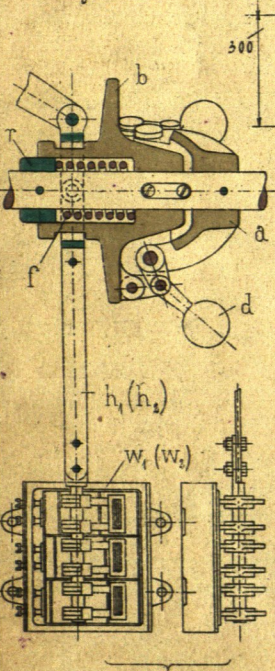


Fig. 1. 1/60.

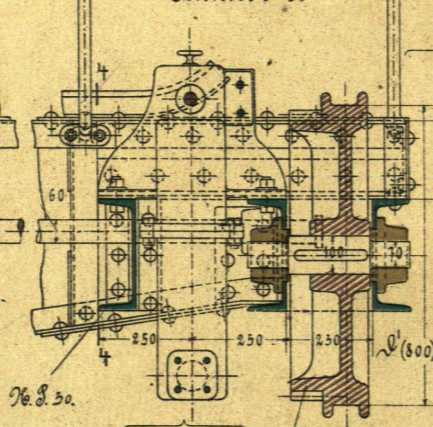
Fig. 1<sup>b</sup>. 1/60.

Fig. 1<sup>c</sup>.



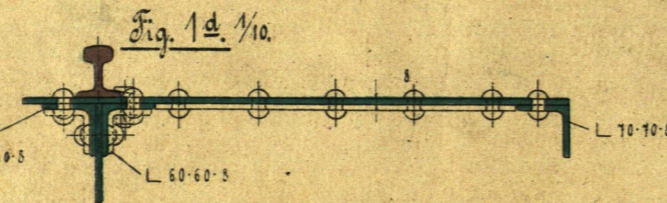
Schnitt 2-2.

Schnitt 3-3.

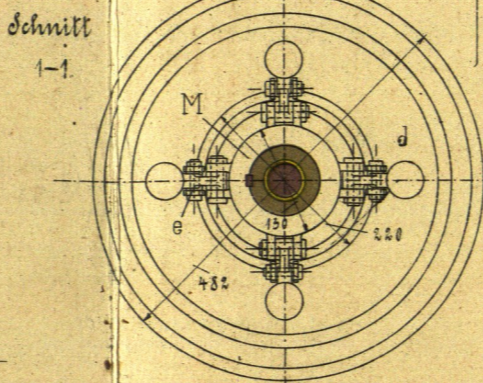


Schnitt 6-6.

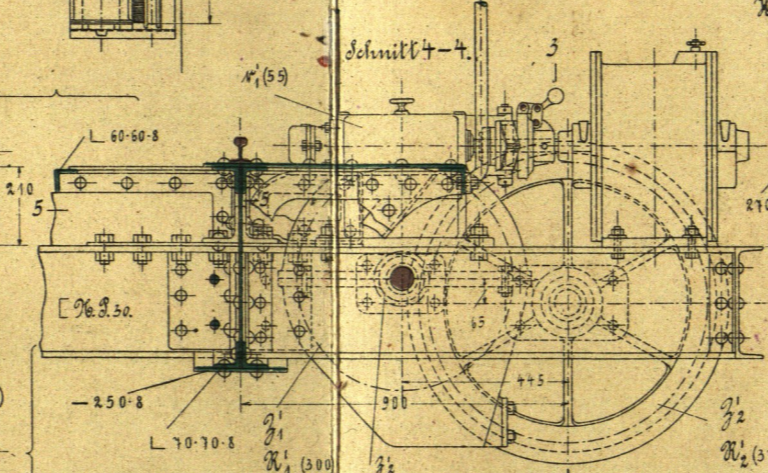
Fig. 1<sup>d</sup>. 1/10.



Schnitt 1-1.



Schnitt 4-4.



Schnitt 5-5.

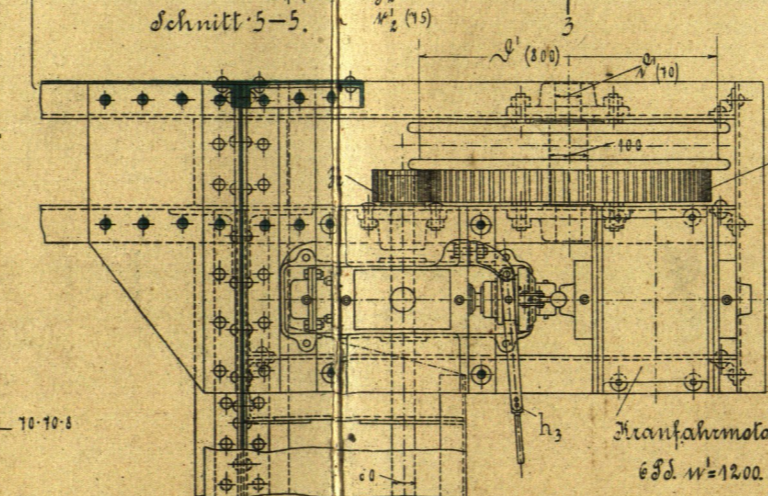
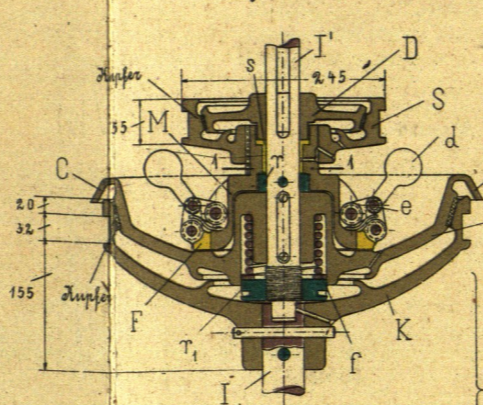


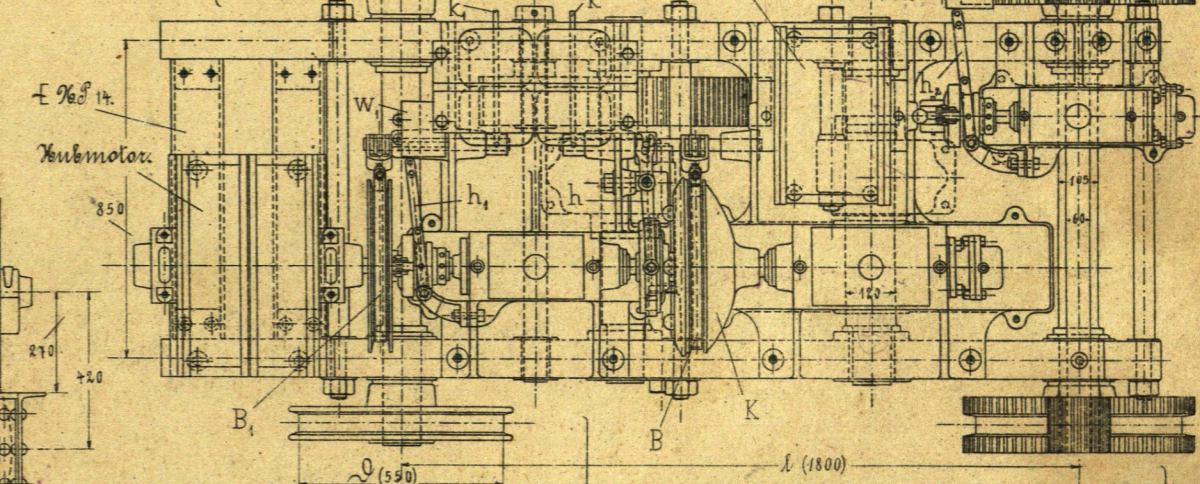
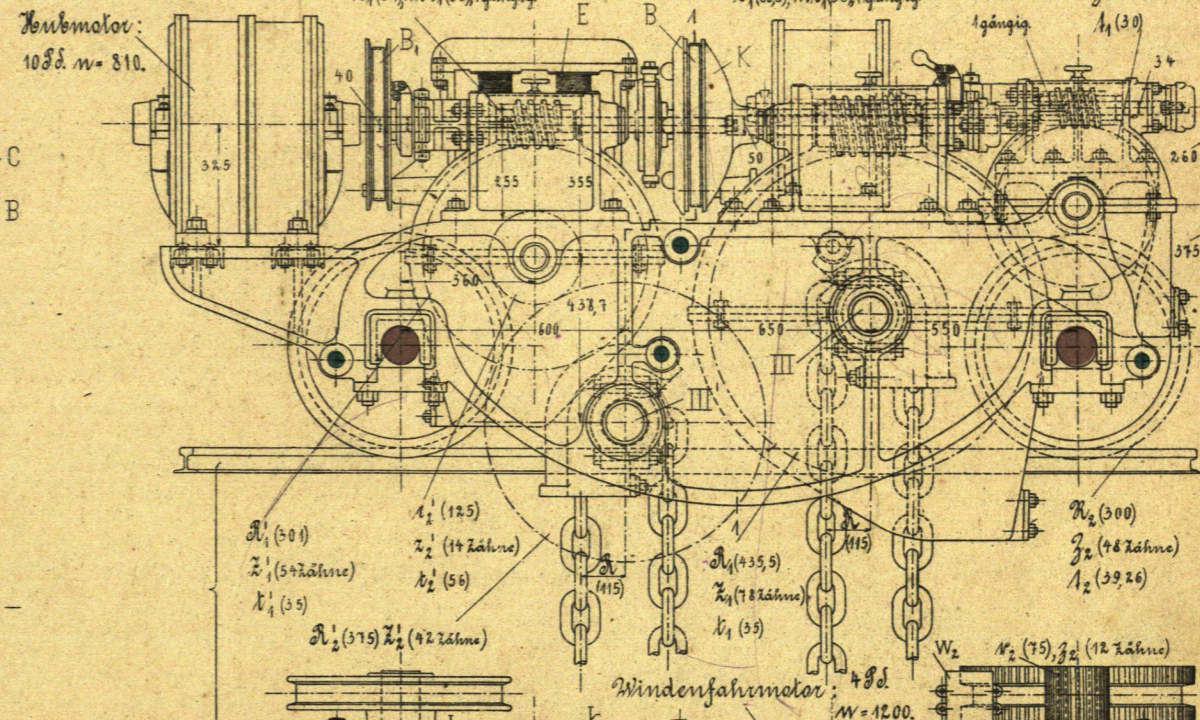
Fig. 1<sup>a</sup>. 1/3.



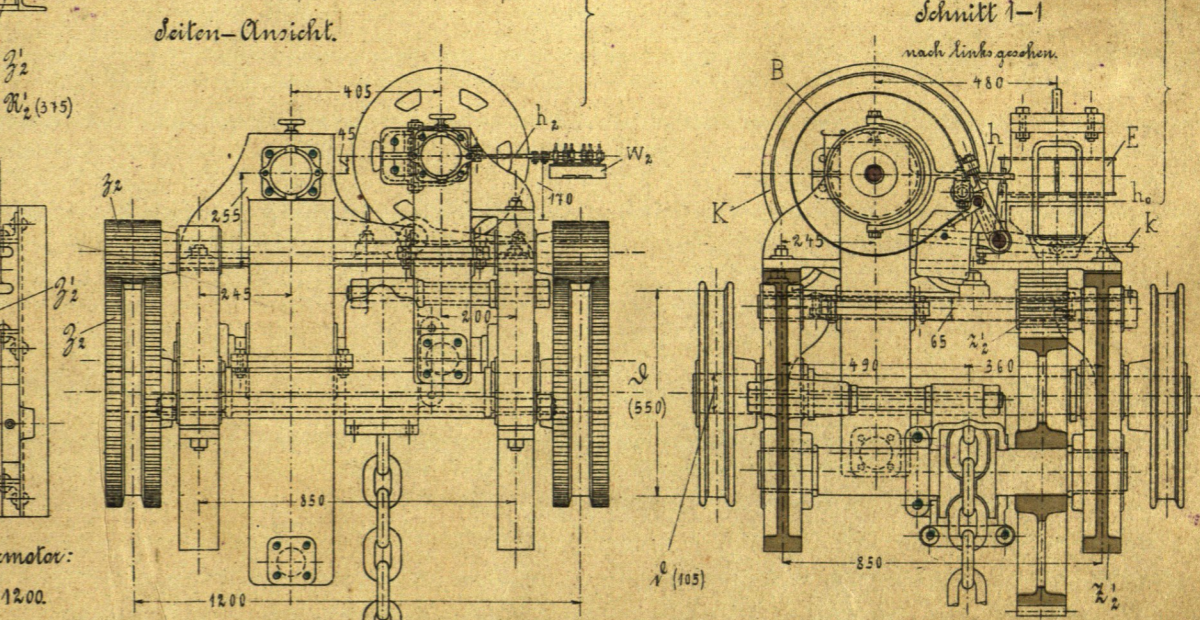
Kranmotor:  
10 P.S. n = 810.

Schnitt 4-4.

Fig. 2. 1/20.



Seiten-Ansicht.



Schnitt 1-1 nach links gesehen.

Kranfahrmotor:  
6 P.S. n = 1200.