

Laufkranträger.

Fig. 1. $\frac{1}{45}$.

Tranbalken zum Kran auf Taf. 25.

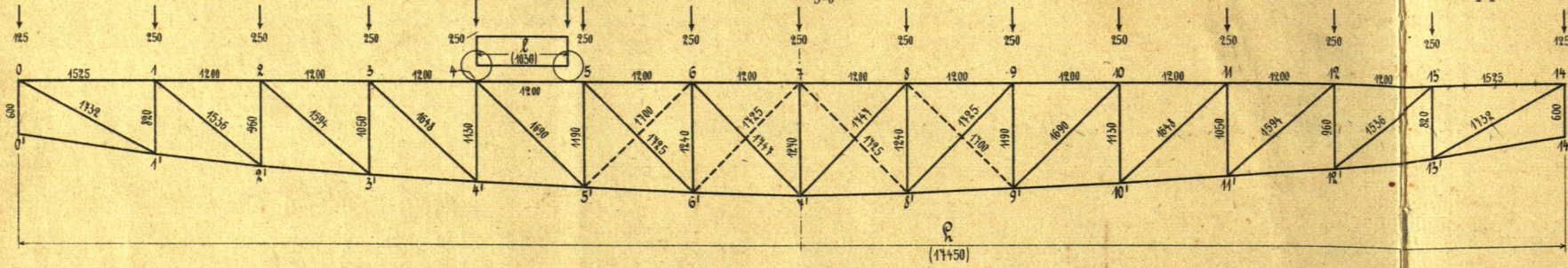


Fig. 1^a.

1 mm = 60 kg.

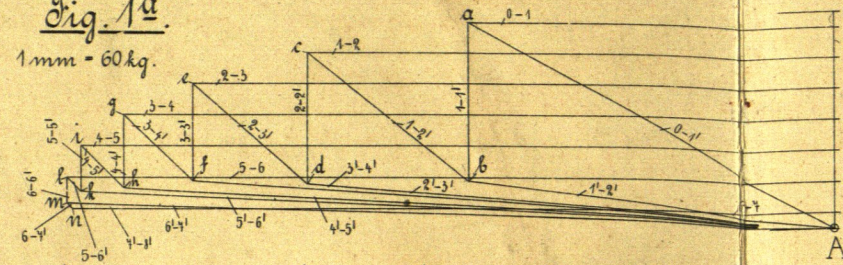


Fig. 3^a. $\frac{1}{10}$.

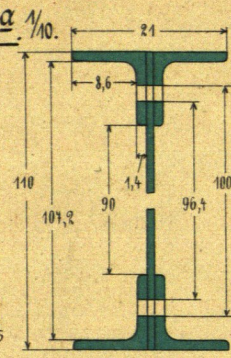


Fig. 3^b. $\frac{1}{10}$.

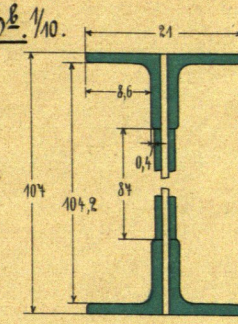


Fig. 3.

Tranbalken zum Kran auf Taf. 22.

Längen 1:100,
Kräfte 1 mm = 150 kg.

Fig. 3^c. $\frac{1}{10}$.

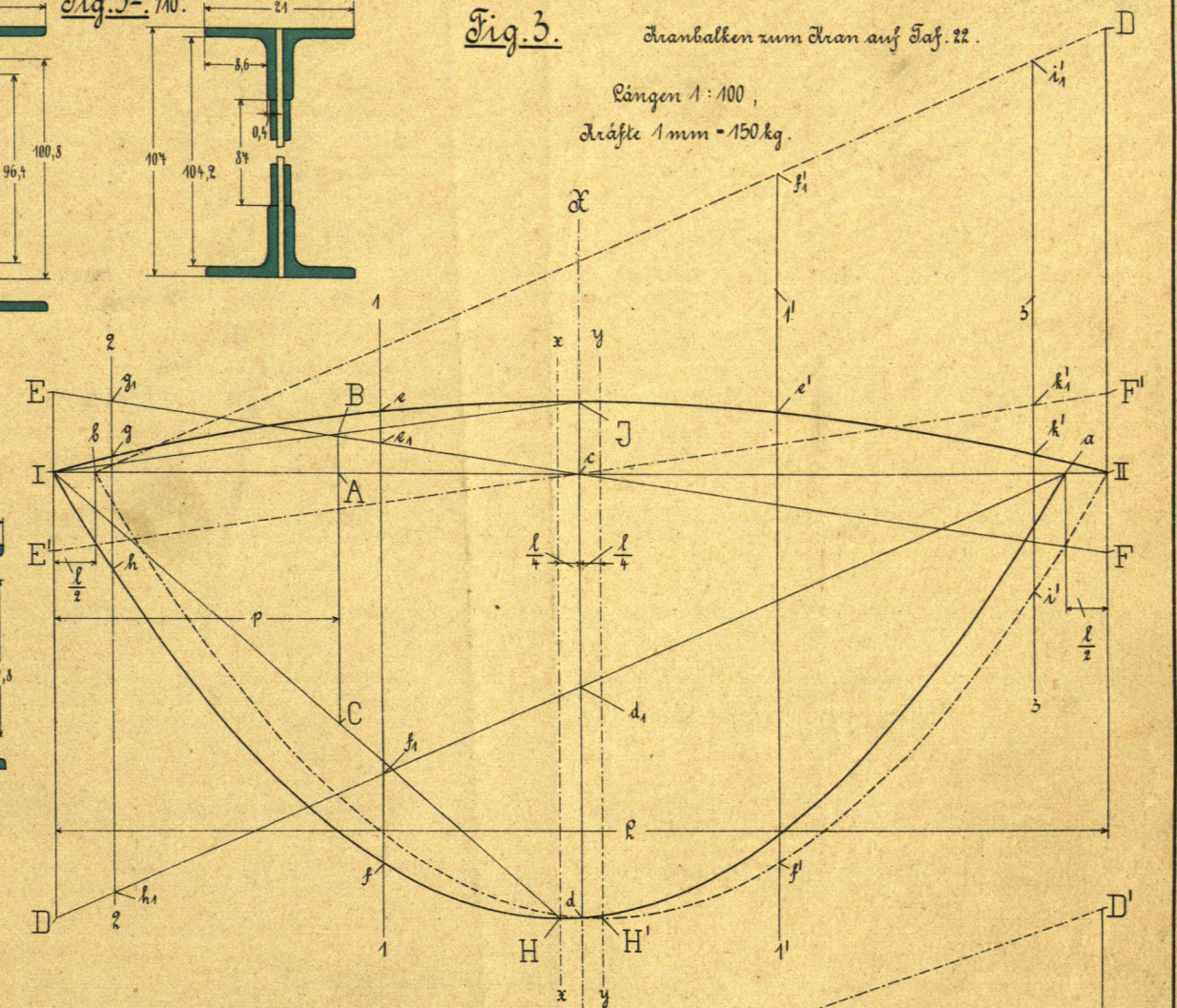
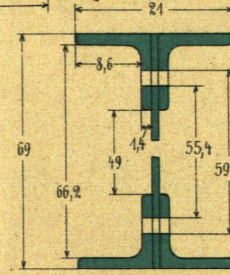


Fig. 1^b.

1 mm = 60 kg.

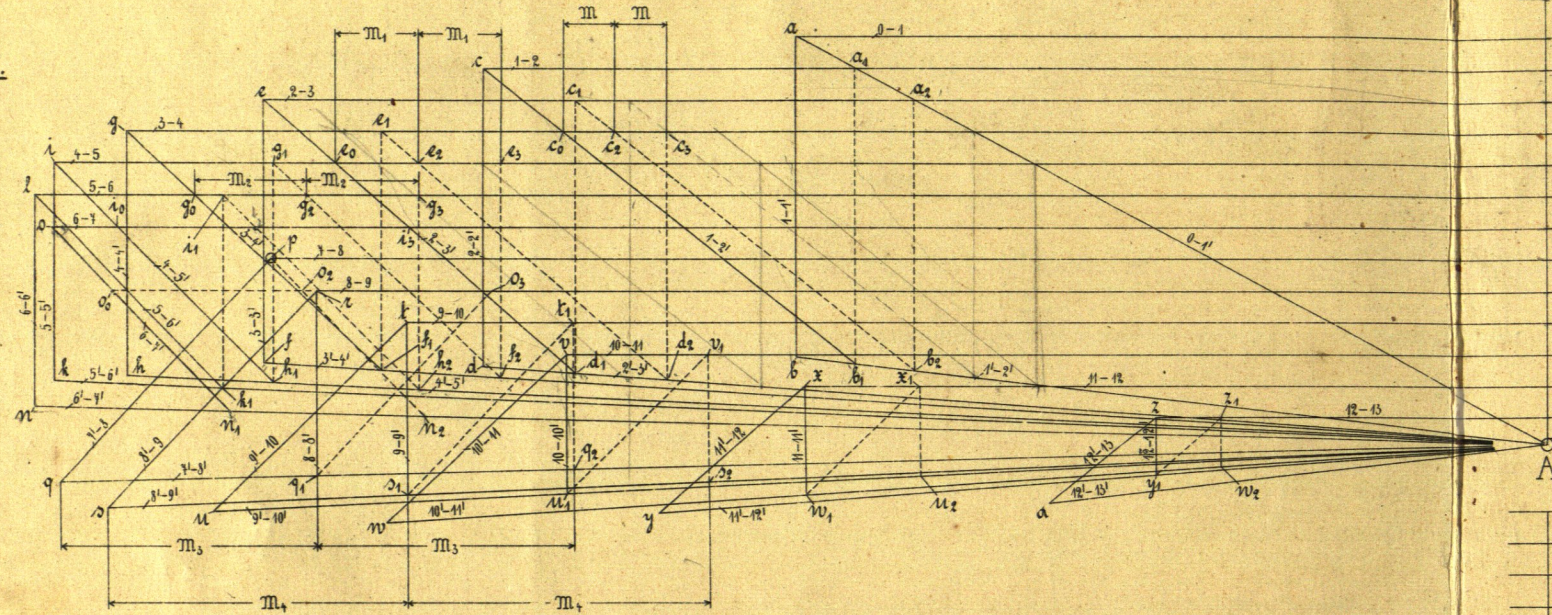


Fig. 1^c.

1 mm = 60 kg.

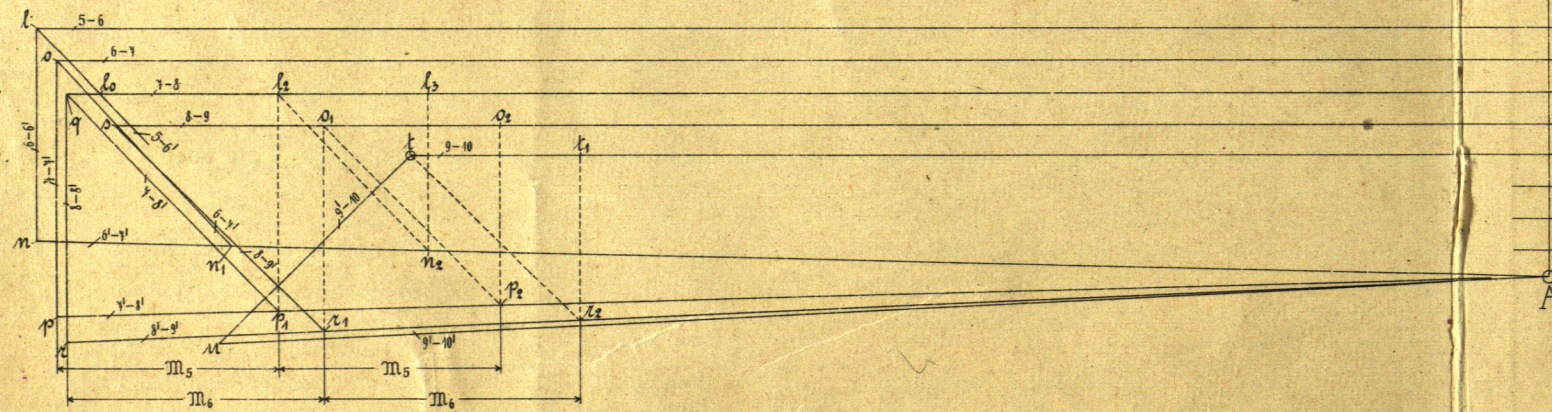


Fig. 2. $\frac{1}{100}$.

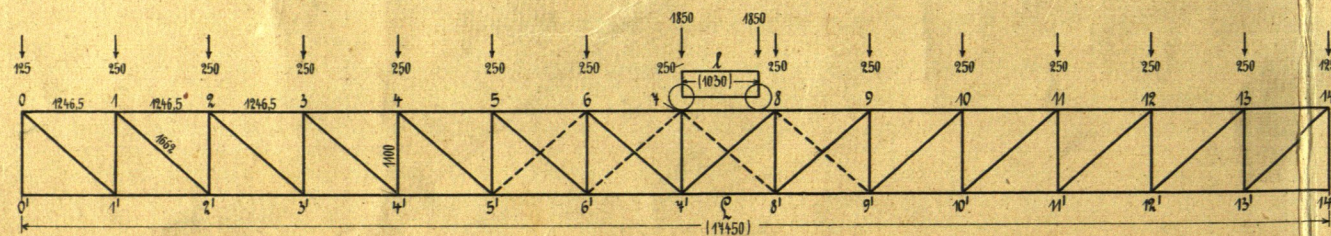


Fig. 2^a.

Längen 1:100,
Kräfte 1 mm = 60 kg.

