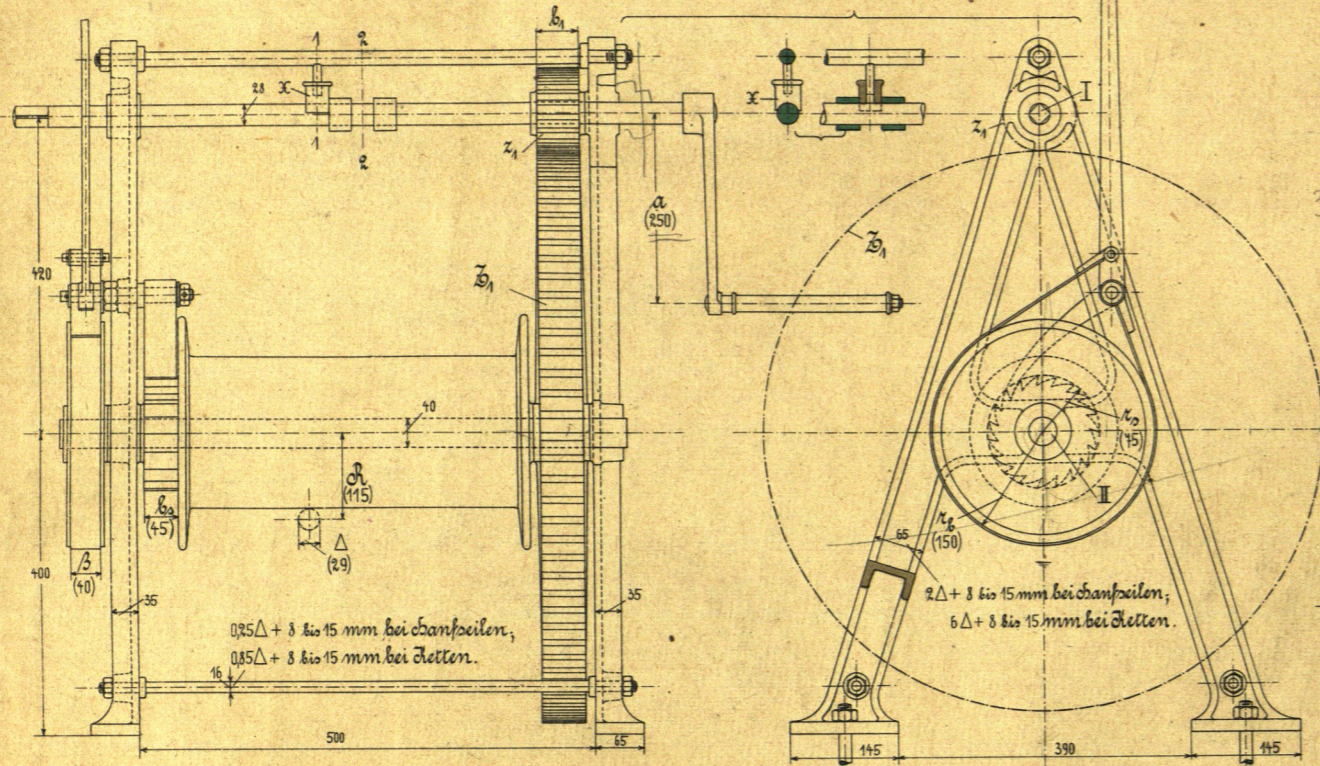


# Trommelwinden.

Fig. 1. 1/10.

Georg Lindner & Co., Chemnitz.



Bremscheibe u. Sperrrad siehe Taf. 11, Fig. 1.

Bolzen des Bremshebels

Schnitt 1-1. (nach rechts klappen.)

Fig. 2. 1/10. Maximallast Q=1500 kg.

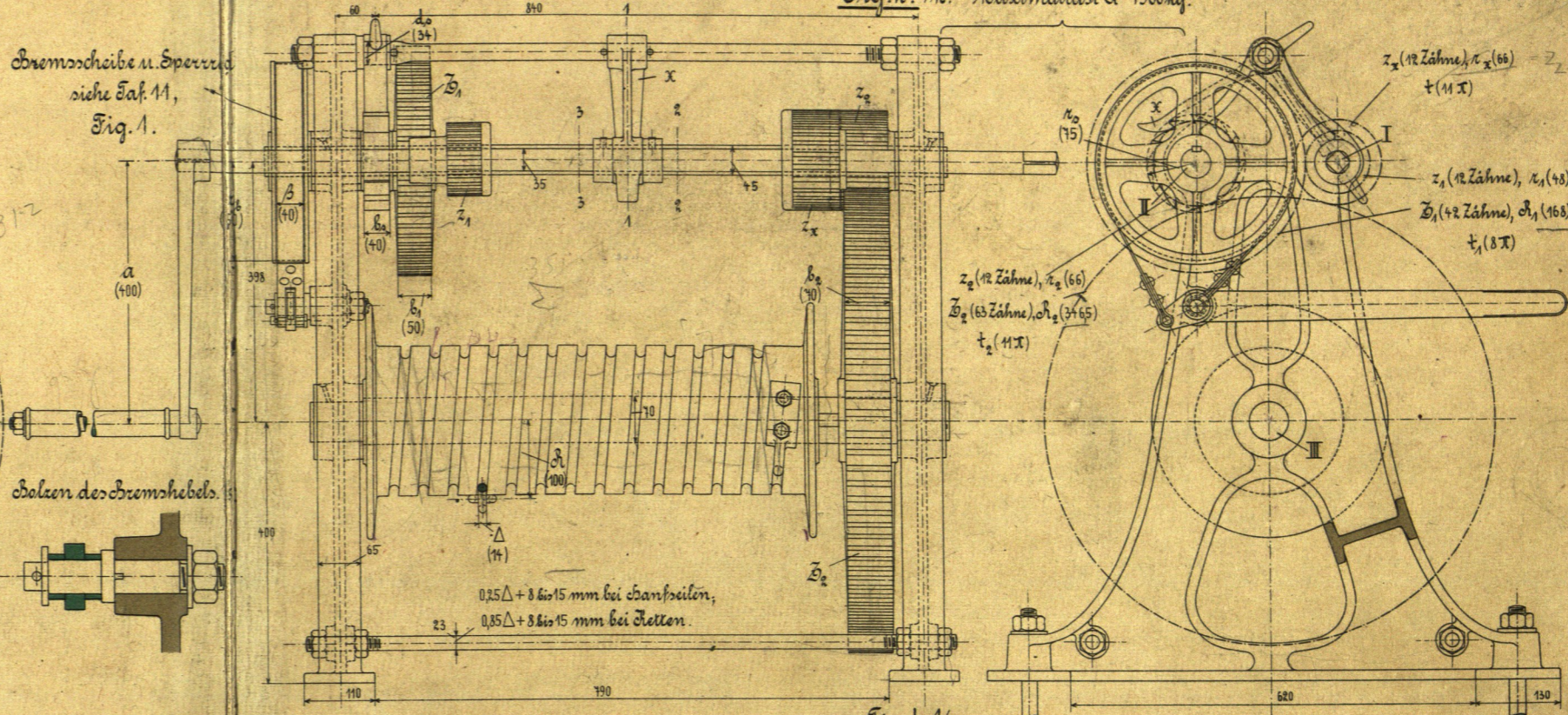


Fig. 3. 1/12.

C. Poppe, Magdeburg.

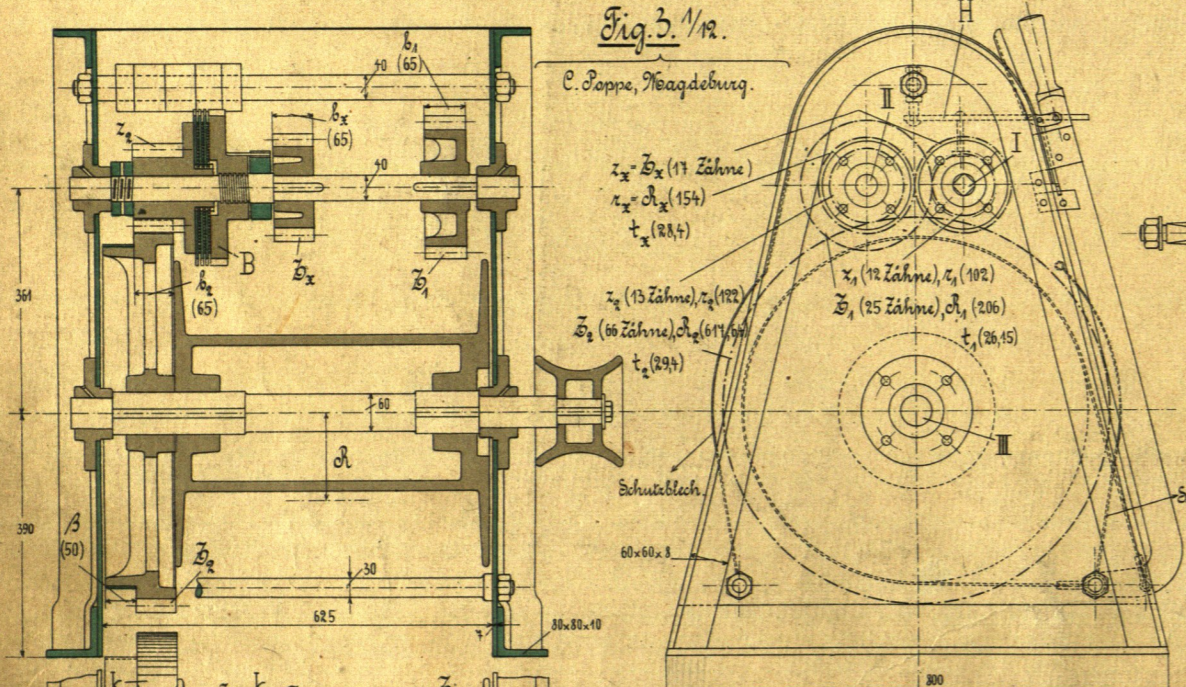


Fig. 5. 1/5.

Fig. 6. 1/5.

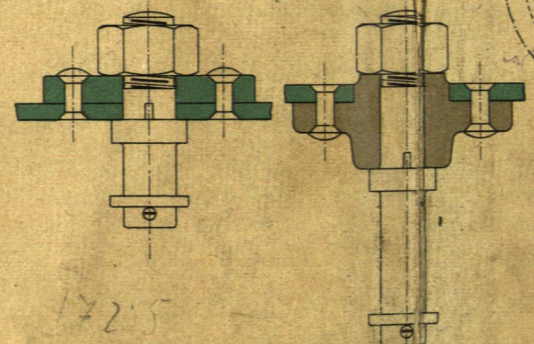


Fig. 4. 1/12.

Gebrüder Burgdorf, Allona.

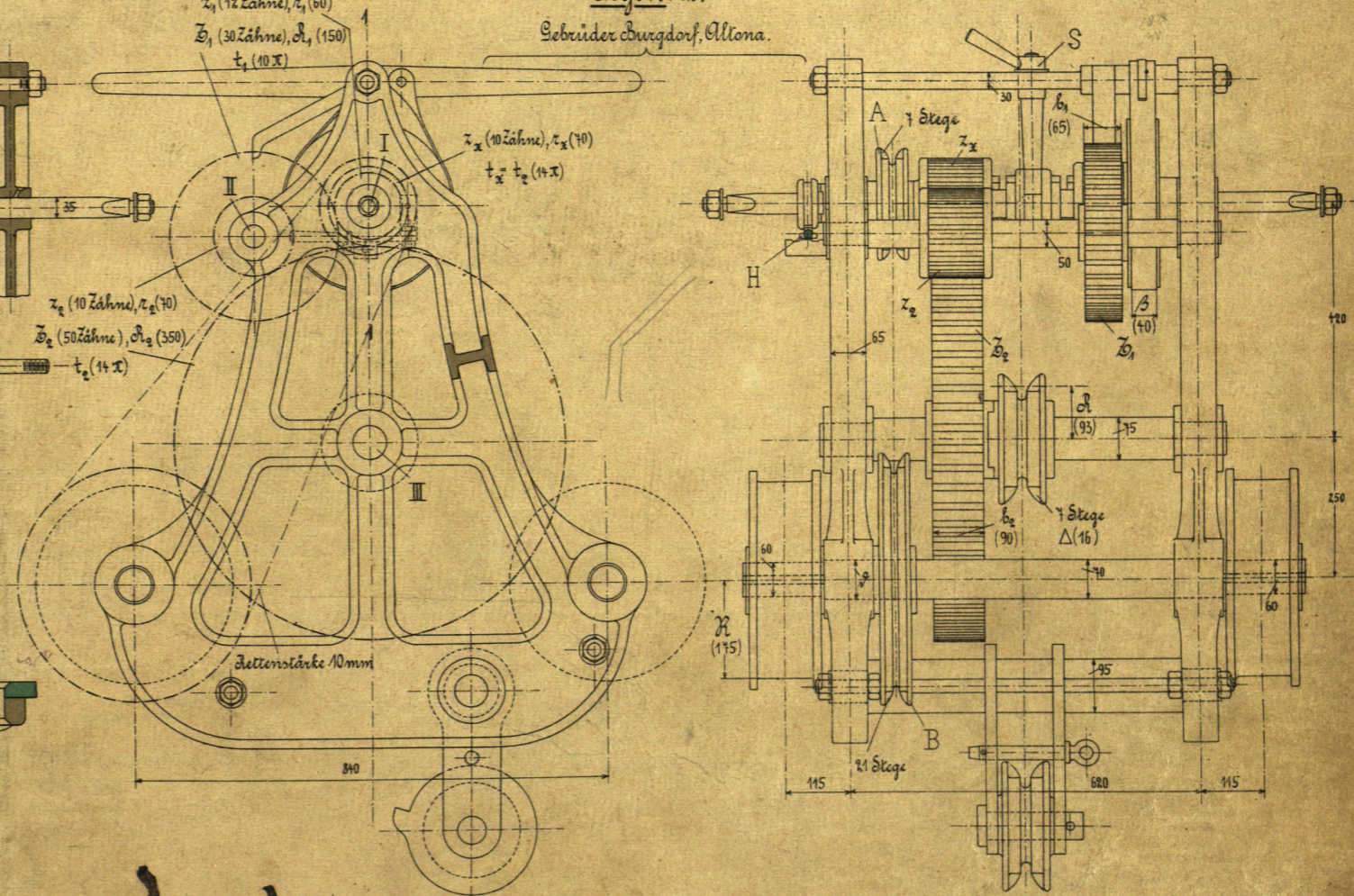
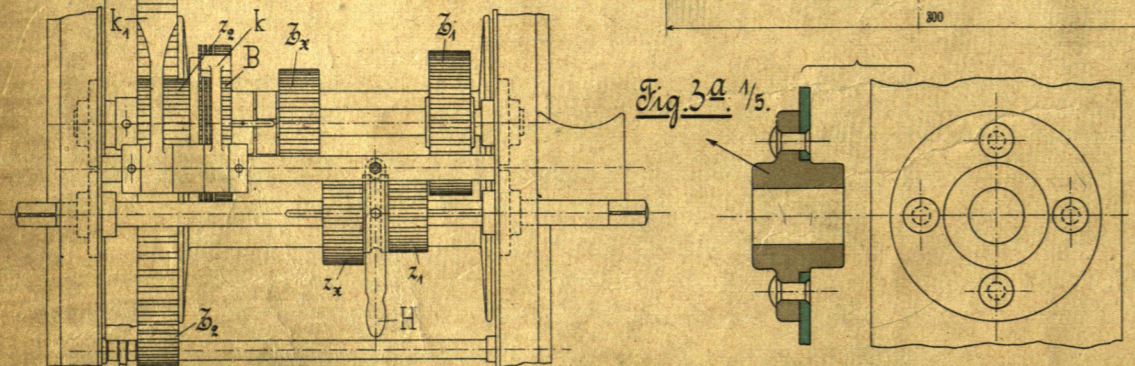


Fig. 3a. 1/5.



1725

3015

1944-5700  
39