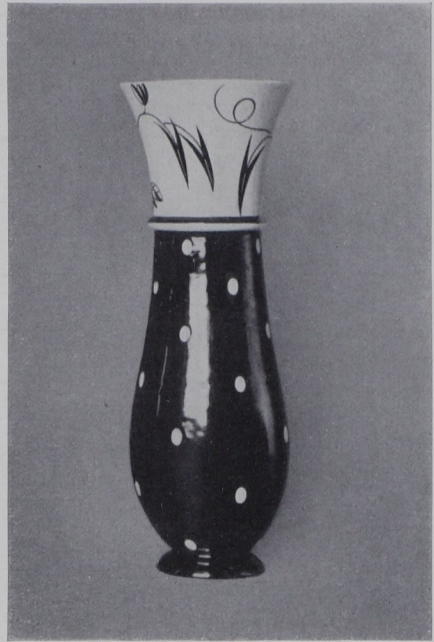
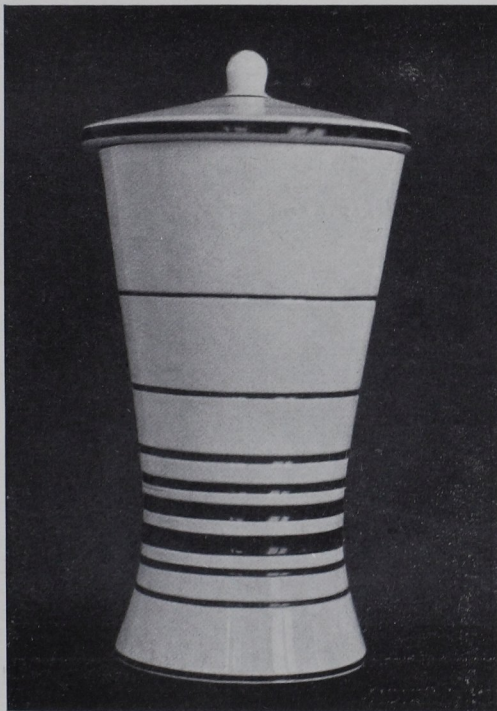




FRÜHKERAMIK  
PREMIÈRE CÉRAMIQUE EARLY CERAMIC



SPÄTKERAMIK  
DERNIÈRE CÉRAMIQUE LATE CERAMIC



VERRES DOUBLÉS



ÜBERFANGGLÄSER

FLASHED GLASSES

Executed by the "Wiener Werkstätte"