

Empfangsgebäude (Kopfstation) -Berlin (n.Römer) (Z.f.B.1870)



Fig. 1518. Ober-Real-Schule in Pilsen  
(n. Hinträger)  
(A.B. 1866.)

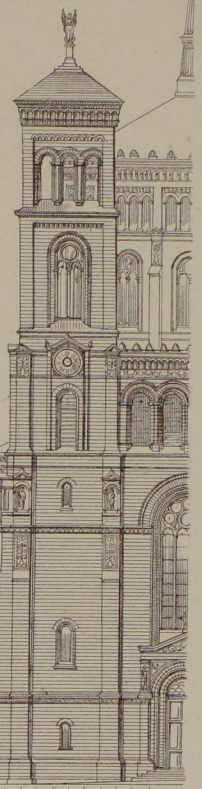


Fig. 1519.  
Thomaskirche  
in Berlin  
(n.F.Adler)  
(D.B.)

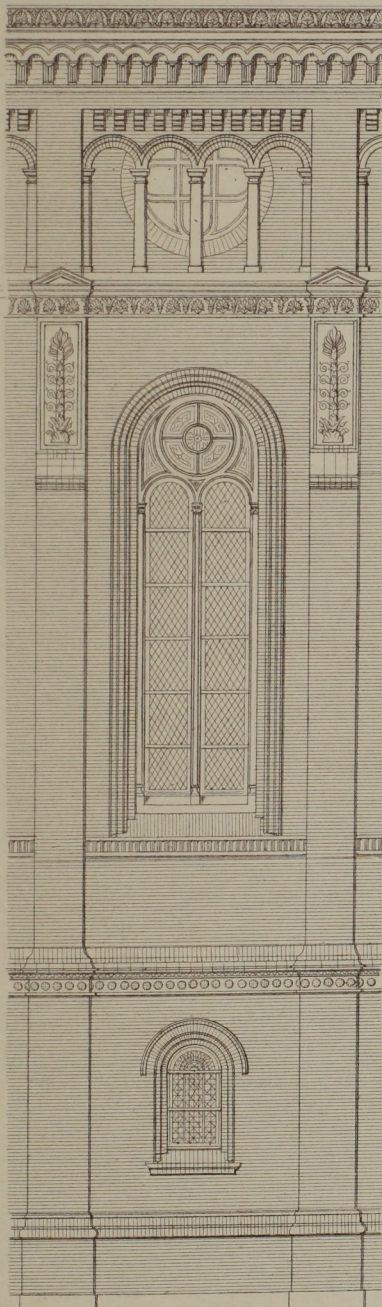


Fig. 1520.  
Thomaskirche  
in Berlin.  
(n.F.Adler)  
Z.f.B. 1871.

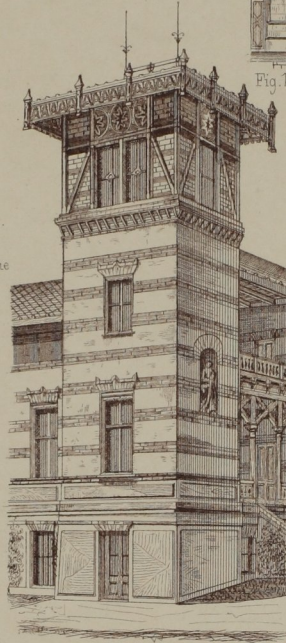


Fig. 1521. Villa in Parkersdorf n.Demski. (M.H. 1874)

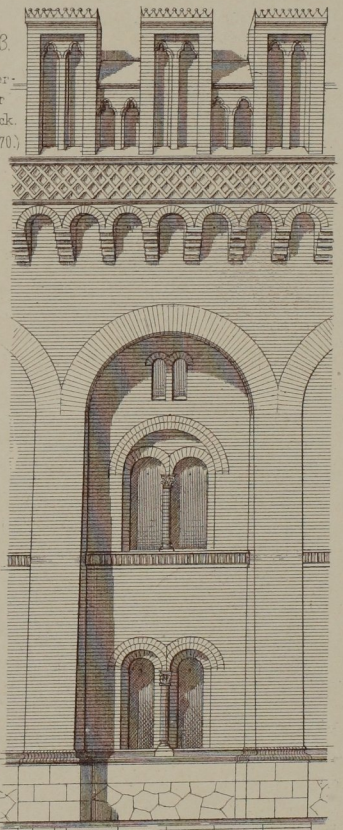


Fig. 1523.  
Hochwasser-  
reservoir  
Gebäude in Lübeck  
(n.?) (Z.f.B.1870)

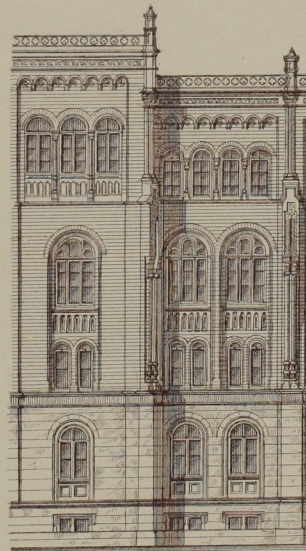


Fig. 1522. Bureau-Gebäude in Hannover -n.Rasch.  
(Z.f.B.)