

Die Façadengestaltung. (Modern gothische Gebäude)

Fig. 1509.

Kirche in England
(n. Al. Lander.)
(The Arch. 1874.)

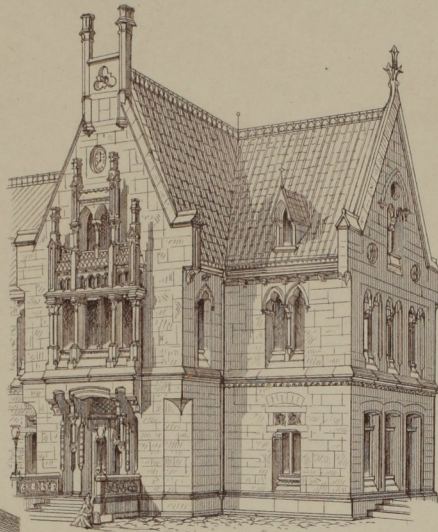
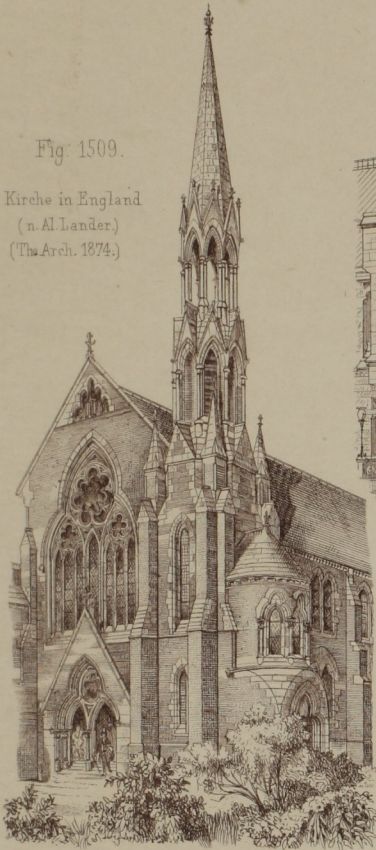


Fig. 1510.

Eisenbahn-Stationgebäude zu Lengerich
(n. Ewerbeck.) (D. B. VIII)

Fig. 1511.

Kirche in England
(n. Parker.)
(The Arch. 1874.)

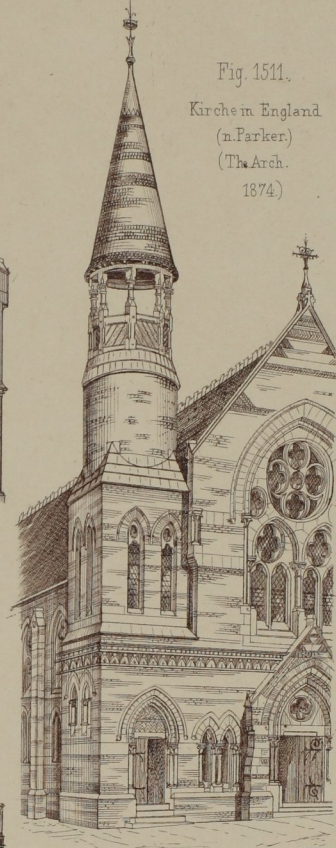


Fig. 1513.

Rathhaus-Dortmund.
(Proj. n. Ewerbeck.)
(M. f. H. 1874.)

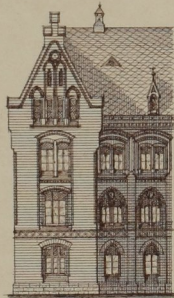


Fig. 1515.

Gymnasium Waldenburg
(n. Flügel M. f. H.)
1874.

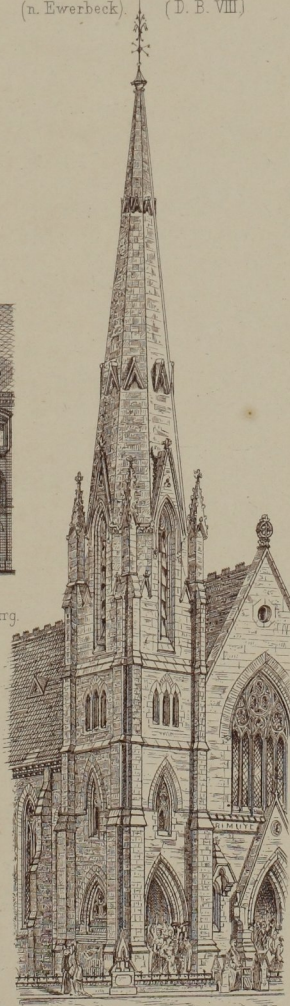
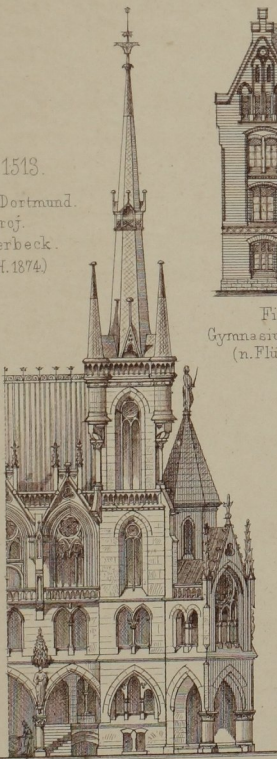


Fig. 1514. Kirche in Manchester. (n. W. Dawes) - The Arch. 1874.)



Fig. 1512.
Stallgebäude-Hamburg.
(n. Breckelbaum.)
(M. f. H. 1874.)

Fig. 1516.

Kirche in England.
(n. E. W. Sachn.)
(The Arch. 1874.)

