

Die Façadengestaltung. (Modern) (Einstöckige Gebäude.)

Fig. 1450.

Mod. Villa in
Carlsruhe
(n. J. Durm); Z.
(f. 1871).

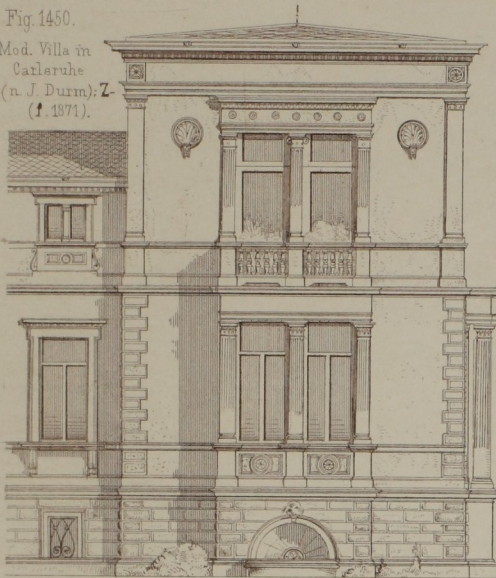


Fig. 1454.

Villa - Wien.
(Girard & Ehlender).
M. f. H. 1873.

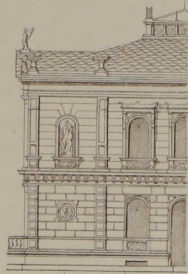


Fig. 1451.

Villa - Lemgo. (n. Ewerbeck).
M. f. H. 1874.

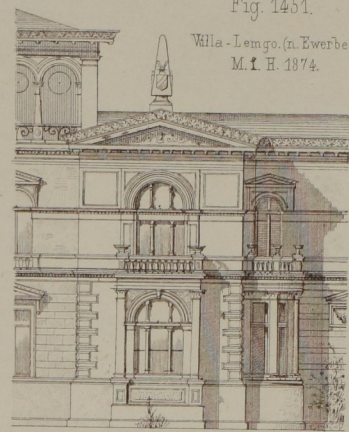
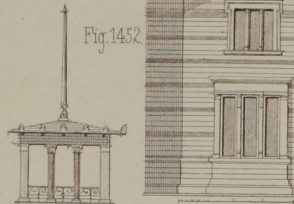


Fig. 1452.



Wohnhaus - Berlin. (Rodenwaldt) M. f. H. 1873.

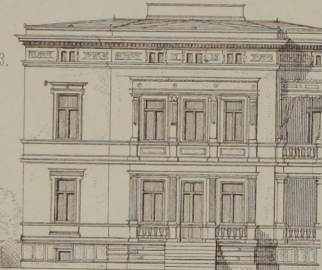


Fig. 1455. (Siehe Fig. 1450.)

Fig. 1456.

Rathh. S. Gallen.
(Sauerwein).
M. f. H. 1874.

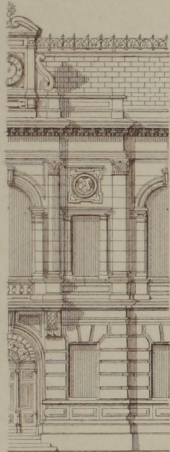


Fig. 1453.

Villa - Wien.
(Girard & Ehlender).
M. f. H. 1873.

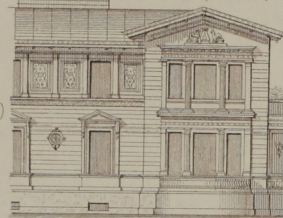


Fig. 1458.

Wohnhaus.
(n. F. Schachner).
A. B. 1870.

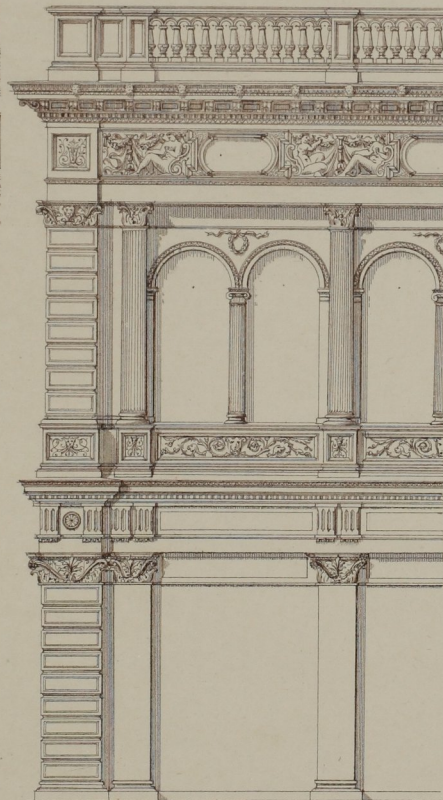


Fig. 1459. Geschäftshaus - Berlin. (n.?) (D. B. 1868.)

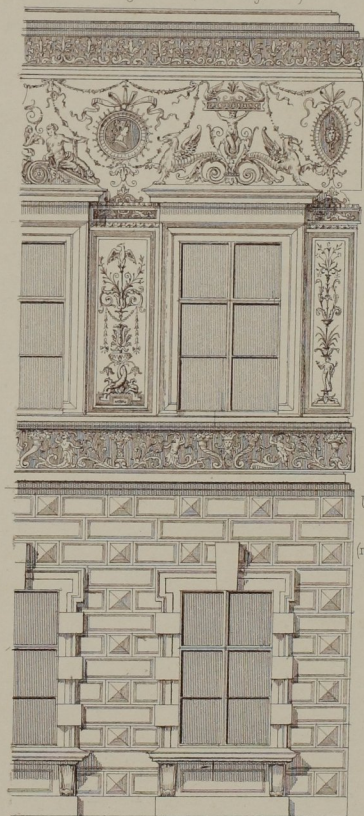


Fig. 1457.

Universitäts-Geb.
Wien
(n. Ritter Perstl).
(Allg. B. 1874).