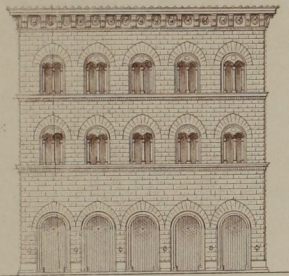


Fig. 1409. Ublinger Thor zu Stendal. (goth.)
(n. Adler & Bornmann) (Aeulserer Ansicht)



Pal. Spannocchi zu Siena.
(ital. Ren.) (n.?)

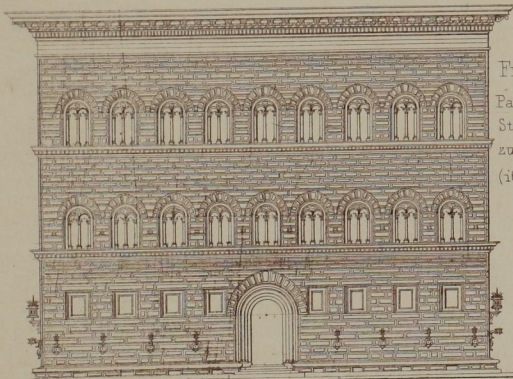


Fig. 1410.
Palazzo
Strozzi
zu Florenz.
(it. Ren.)

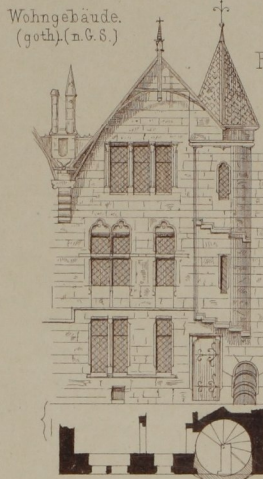


Fig. 1403.

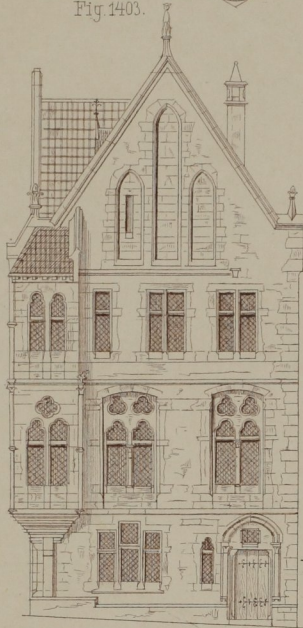


Fig. 1402. Wohnhaus. (Goth.) (n. G. S.)

Fig. 1404.

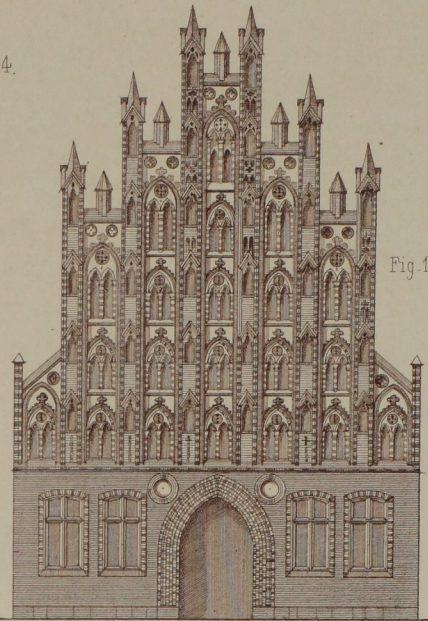


Fig. 1406.

Haus zu Greifswald. (goth. Backsteinbau) (n. Adler.)

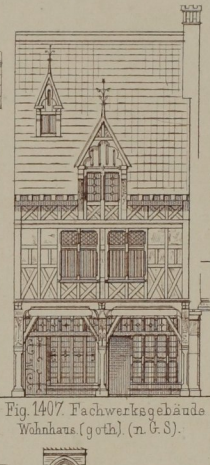


Fig. 1407. Fachwerksgebäude
Wohnhaus (goth.) (n. G. S.)

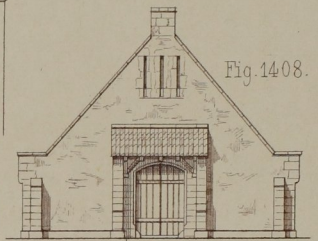
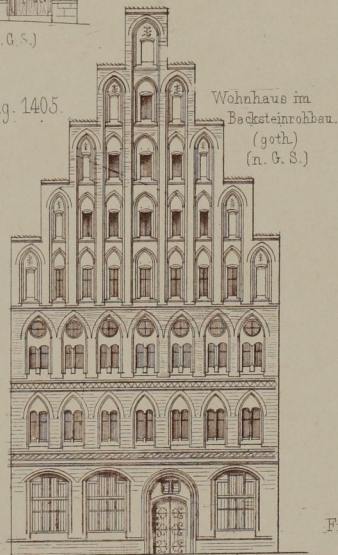


Fig. 1408.

Scheune. (goth.) (n. G. S.)

Fig. 1405.



Wohnhaus im
Backsteinrohbau.
(goth.)
(n. G. S.)

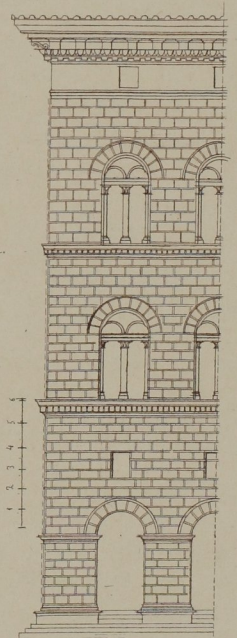


Fig. 1412. Palast Piccolomini zu Siena.
(ital. Ren.) (n. G. S.)