

Fig. 1321. Madonna delle Carceri zu Prato.

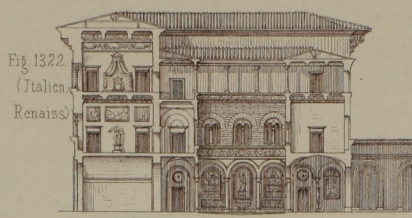


Fig. 1322. Pal. Riccardi zu Florenz.

Fig. 1323
(Italien)
Renaiss.

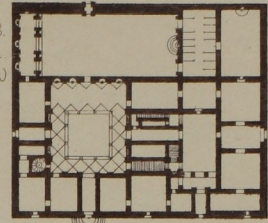
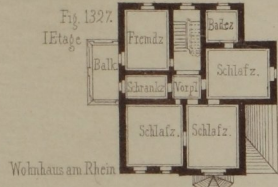


Fig. 1323. Pal. Riccardi zu Florenz.



Wohnhaus am Rhein

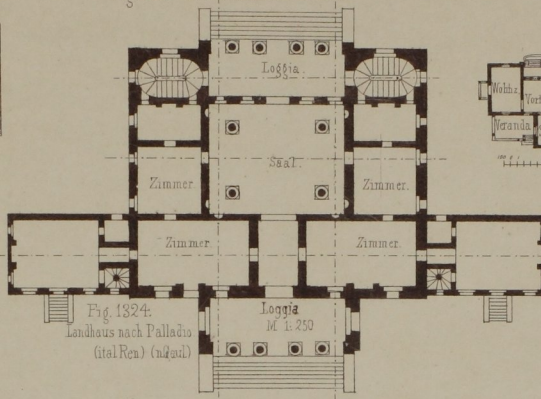


Fig. 1324.
Landhaus nach Palladio
(ital. Ren.) (n. Gaud.)

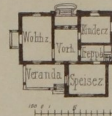


Fig. 1343
Villa bei
Elfenfeld n. 2

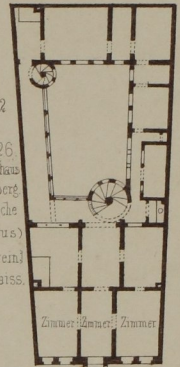


Fig. 1326.
Wohnhaus
in Würzburg
(Frankische
Haus)
im Ortweind
deutsche Renaiss.

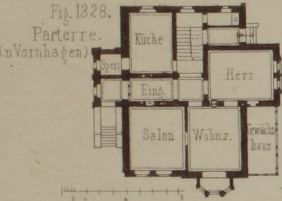


Fig. 1328.
Parterre.
(in Varnhaagen)

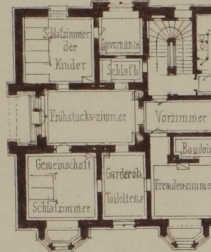


Fig. 1332.
I. Etage.
Familienhaus
d. Dresdener
Architektur Schule.

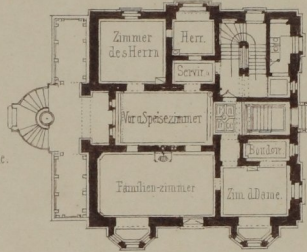


Fig. 1331 Parterre.

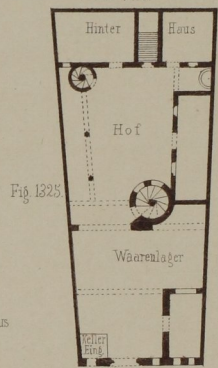


Fig. 1325

Parterre.

Fig. 1325 (Siehe 1326)

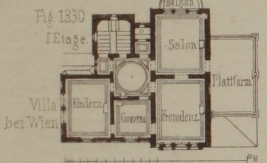


Fig. 1330
I. Etage
Villa
bei Wien

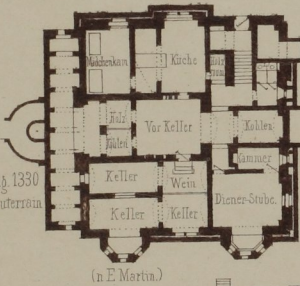


Fig. 1330
Souterrain
(n. E. Martin.)

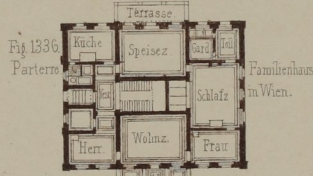


Fig. 1336
Parterre
Familienhaus
in Wien.

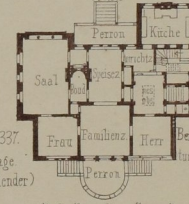


Fig. 1344
Wohnhaus
aus der
Belauer Architek-
tur Schule (n. 2)

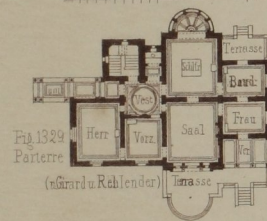


Fig. 1329
Parterre
(n. Gaud. u. Rühlender)

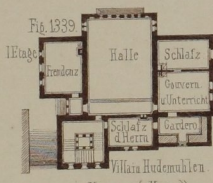


Fig. 1338
I. Etage
Villa Hedenmullen
Hannoverscher Hasee)

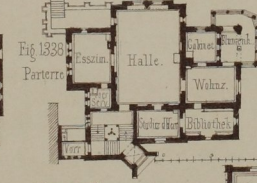


Fig. 1338
Parterre

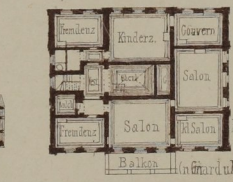


Fig. 1337.
I. Etage
(n. Gaud. u. Rühlender)

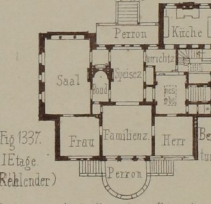


Fig. 1341

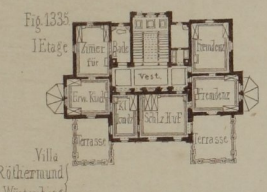


Fig. 1335
I. Etage
Villa
Rüthemann
in Würtemberg

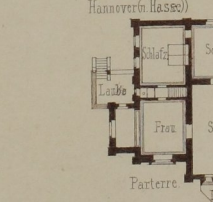


Fig. 1340.
Parterre
(n. Schwatlo)

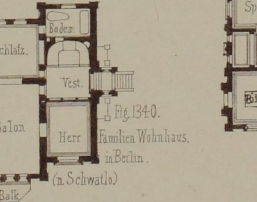


Fig. 1340.
Parterre
(n. Schwatlo)

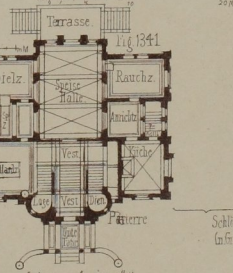


Fig. 1341

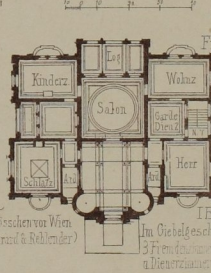


Fig. 1342

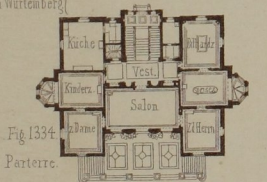


Fig. 1334
Parterre
(n. Trutschler)

Schlösschen von Wien
(n. Gaud. u. Rühlender)
I. Etage.
Im Obergeschoss liegen
3 Familienzimmer, ein
u. ein Wohnzimmer.