

Giebel.

(deutsche Renaissance u. Modern).

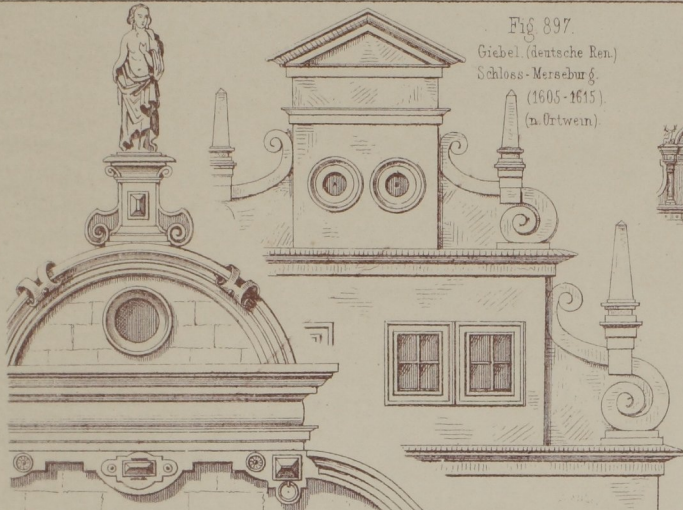


Fig. 897.
Giebel (deutsche Ren.)
Schloss-Merseburg
(1605-1615)
(n. Ortwein)

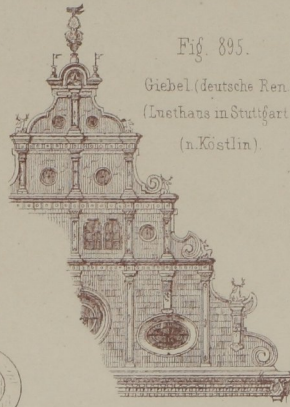
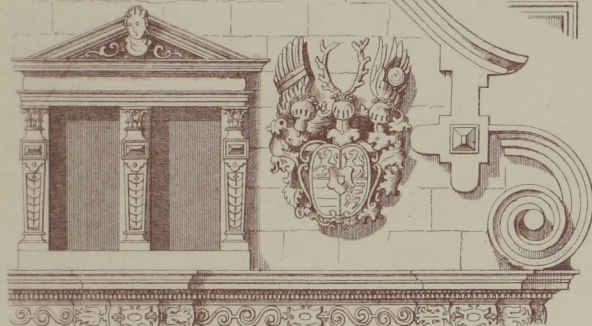


Fig. 895.
Giebel (deutsche Ren.)
(Lusthaus in Stuttgart)
(n. Köstlin)



Giebel (deutsche Renaissance) - 1601-1607.
(Schloß-Heidelberg) (n. Elswern)

Fig. 896.

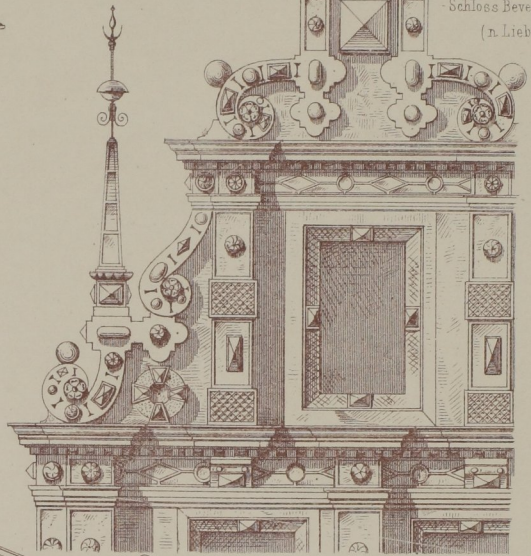


Fig. 899.
Giebel (deutsche Ren.)
- Schloss-Bevern-1603.
(n. Liebold)



Fig. 898.
Giebel (deutsche Ren.)
(Len.-Katharinen-Spital)
- Heilbronn. (n. Lübke)

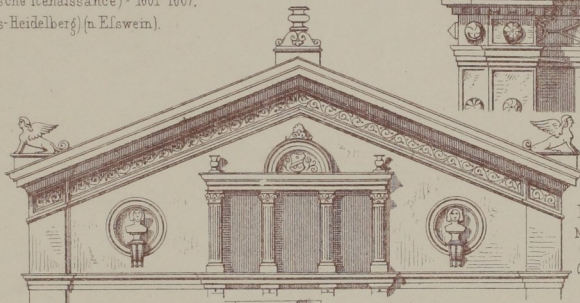


Fig. 902.
Moderner
Giebel
(n. Ceul)

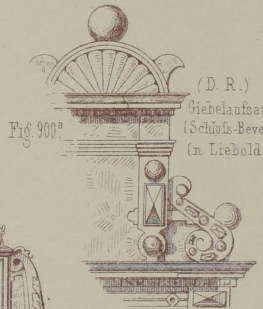


Fig. 900.
Giebelaufsatz
(Schloß-Bevern)
(n. Liebold)

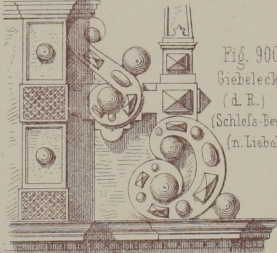


Fig. 900.
Giebelsecke.
(d. B.)
(Schloß-Bevern)
(n. Liebold)

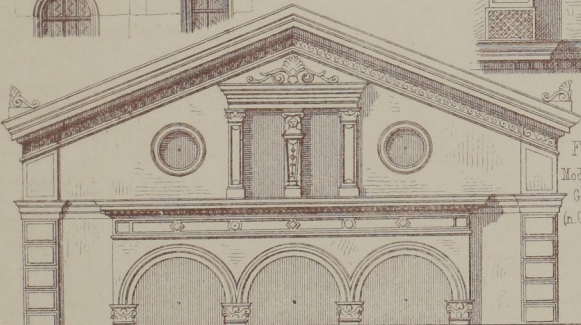


Fig. 901.
Moderner
Giebel
(n. Ceul)

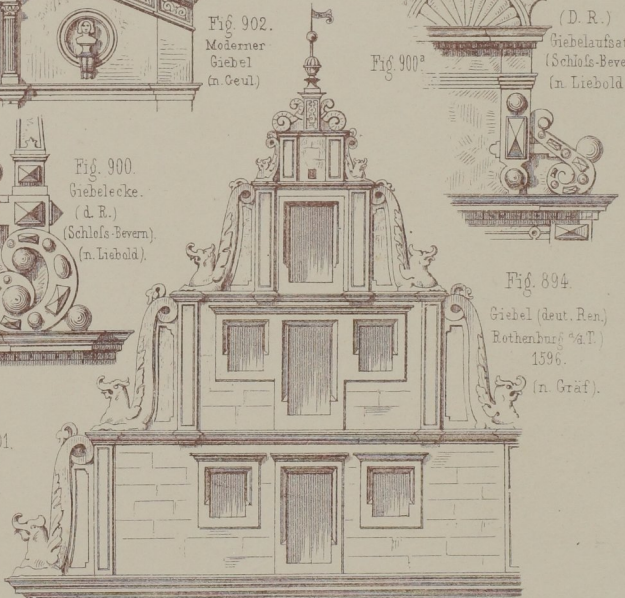


Fig. 894.
Giebel (deut. Ren.)
Rothenburg a.T.
1596.
(n. Gräf)