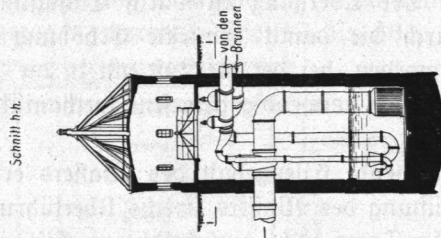
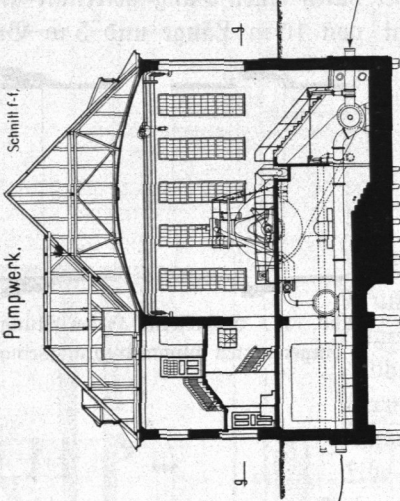


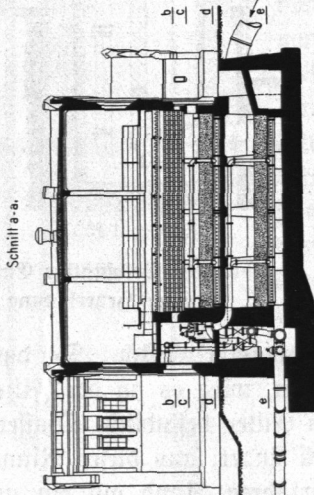
Sammelbrunnen
der Heberleitungen.



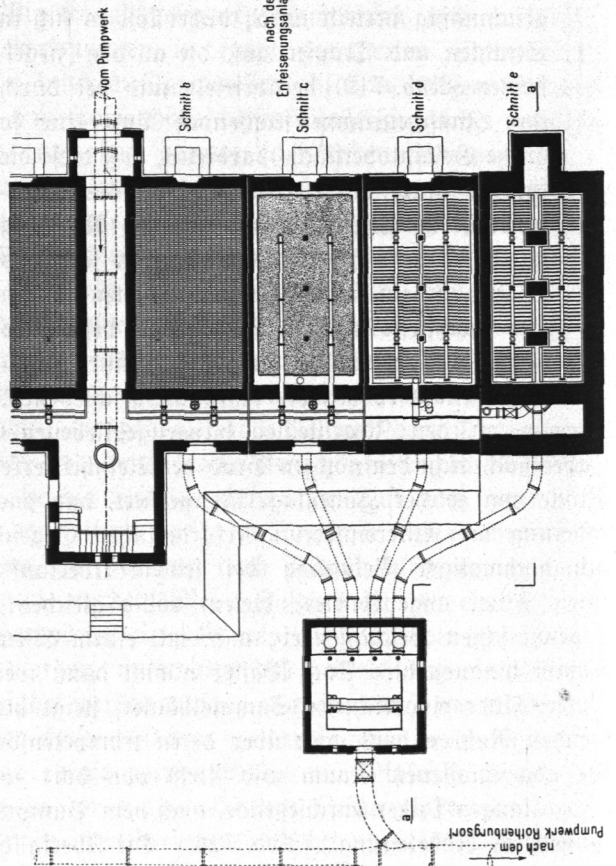
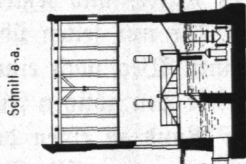
Pumpwerk.
Schnitt f-f.



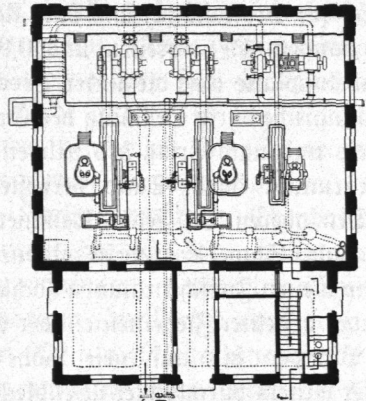
Enteisungsanlage.
Schnitt a-a.



Sammelhaus
für enteisertes Wasser.
Schnitt a-a.



Schnitt g-g.



1:400.

Abb. 719 bis 724. Grundwasserwerk Billbrook, Anlagen zur Gewinnung, Sammlung und Enteisung von täglich 30000 cbm Grundwasser.