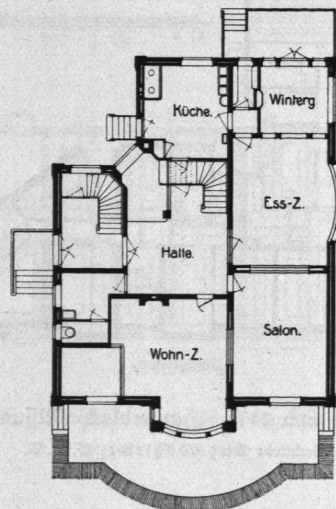
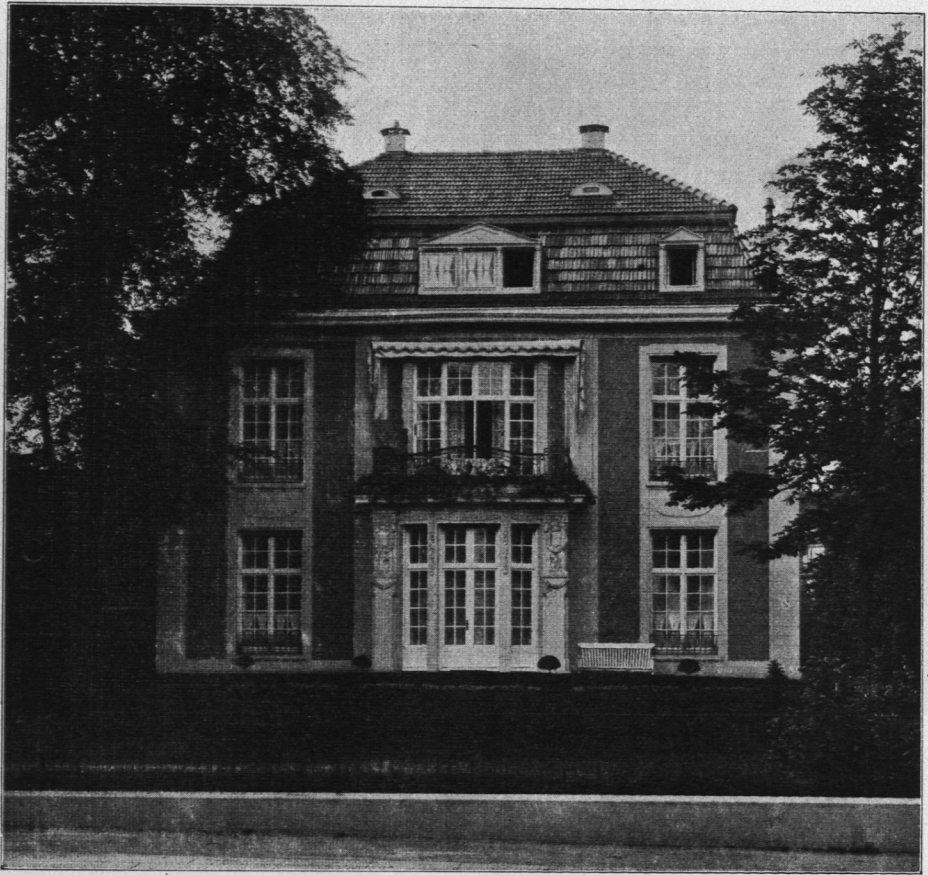


2. Einzelhäuser.



Erdgeschoss.

Abb. 1179 und 1180. Landhaus Paul Schulze, Flottbeker Chaussee.
Architekt F. Christens.

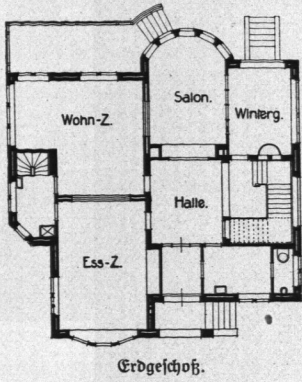


Abb. 1181 und 1182.
Landhaus Detker, Philosophenweg.
Architekt F. Christens.

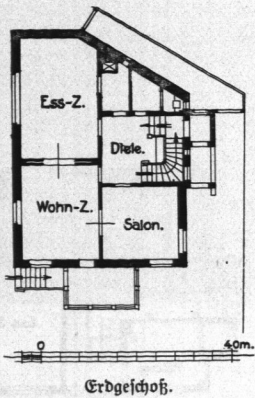
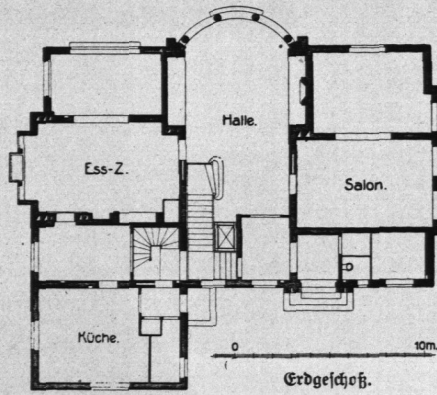


Abb. 1183 und 1184.
Landhaus Hingpeter, Dthmarschen,
Margarethenstraße 7.
Architekten Schaar & Hingpeter.



Abb. 1185 und 1186.
Landhaus Heidmann,
Dithmarschen, Eichenallee 1.



Architekten
Lundt & Kallmorgen.

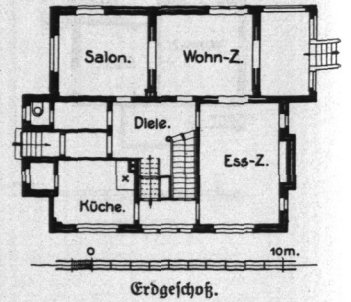


Abb. 1187 und 1188.
Landhaus Feige.
Architekten Raabe & Wöhlecke, B. D. U.

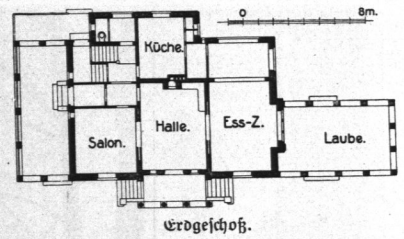
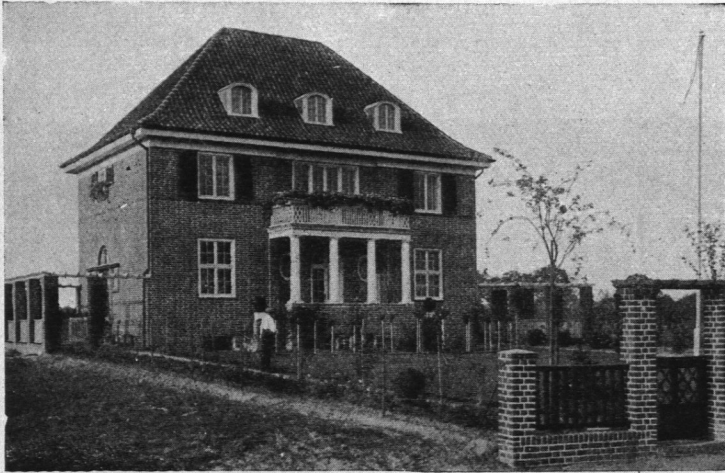


Abb. 1189 und 1190.
Landhaus Sano, Böcklinstraße 6.
Architekt R. Ostermeyer.

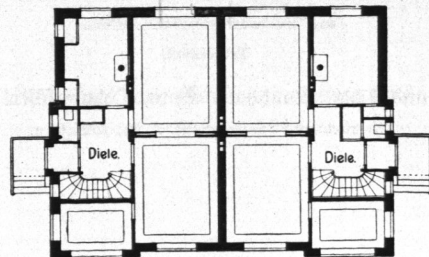
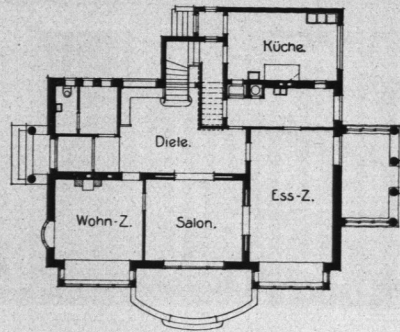


Abb. 1191 und 1192.
Gartenbaugesellschaft m. b. H.,
Doppelhaus in der Cranachstraße.

Architekt Fr. Neugebauer.

Erdgeschoss.



0 10m.

Erdgeschoss.

Abb. 1193 und 1194. Landhaus Horn, Dthmarschen, Parkstraße.
Architekten Lorenzen, B. D. A., & Stehn.

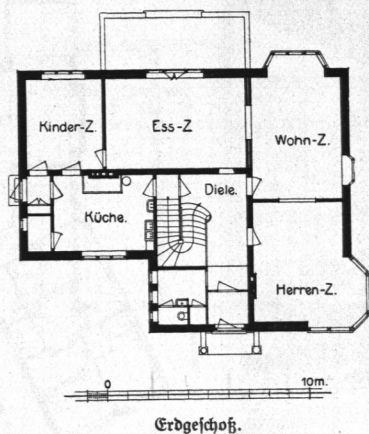
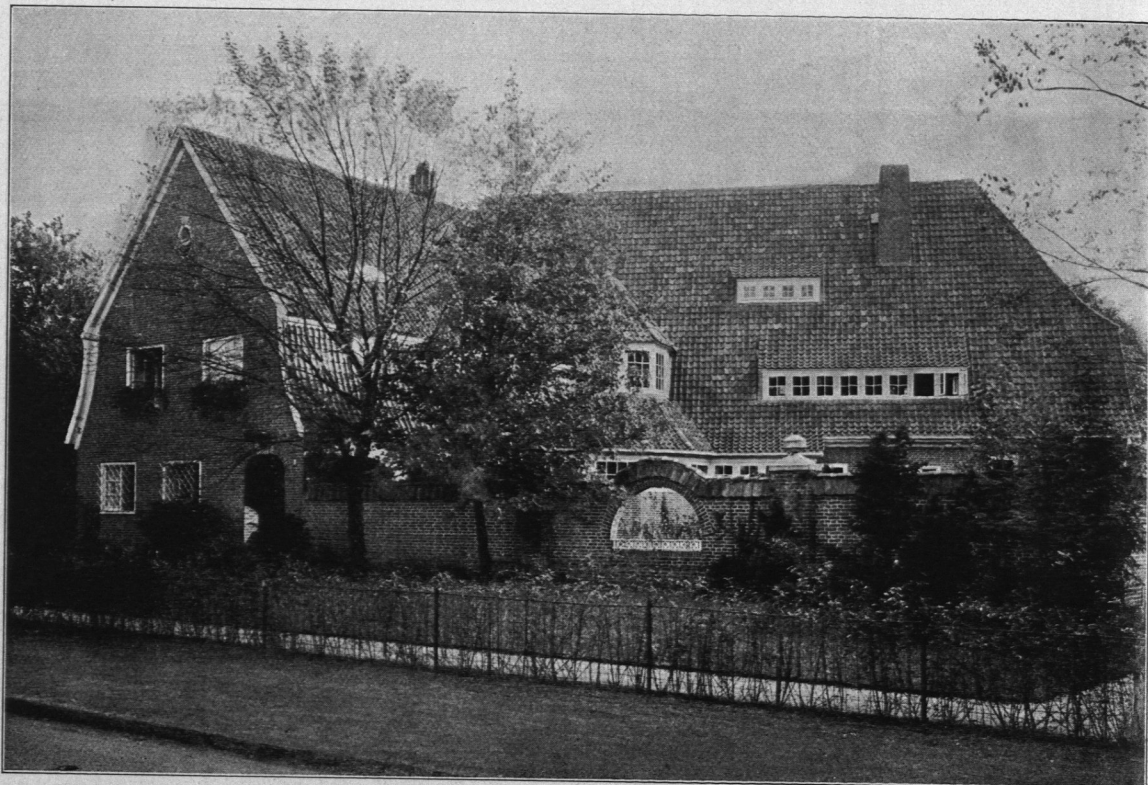


Abb. 1195 und 1196. Landhaus Ganjsauge, Dthmarschen, Lindenallee.
Architekten Freitag & Klingius.



Innenansicht.

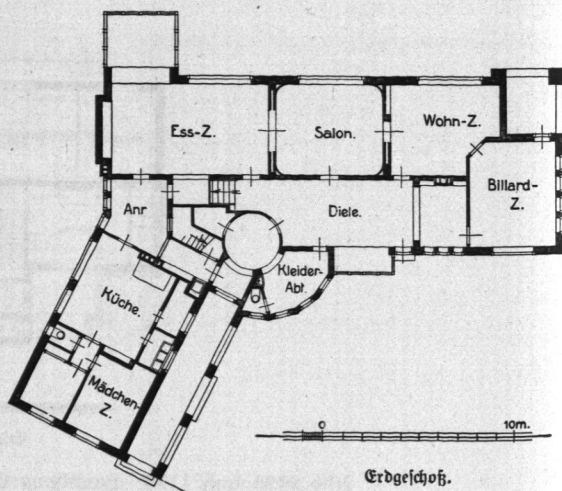


Abb. 1197 bis 1199.
Landhaus S. Bondy, Dithmarschen.
Architekten H. & D. Gerson.

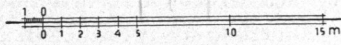
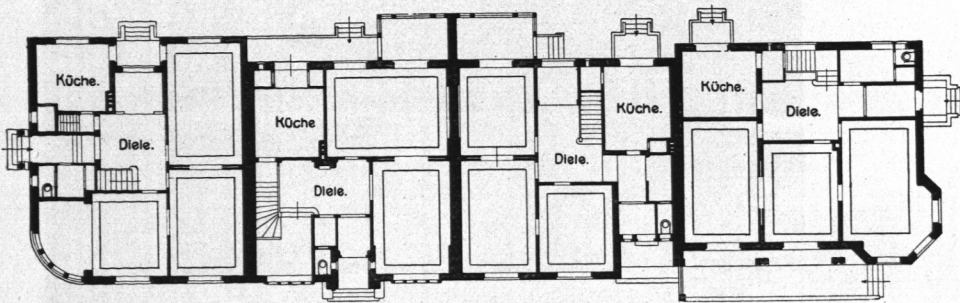


Abb. 1200 und 1201. Einzelhäuser Othmarschen, Dürerstraße.
Architekt R. Diermeyer.