

Abb. 608. Pestalozzi-Stift in Volksdorf, Ansicht.  
Architekten Hugo Stammann und G. Zinnow.

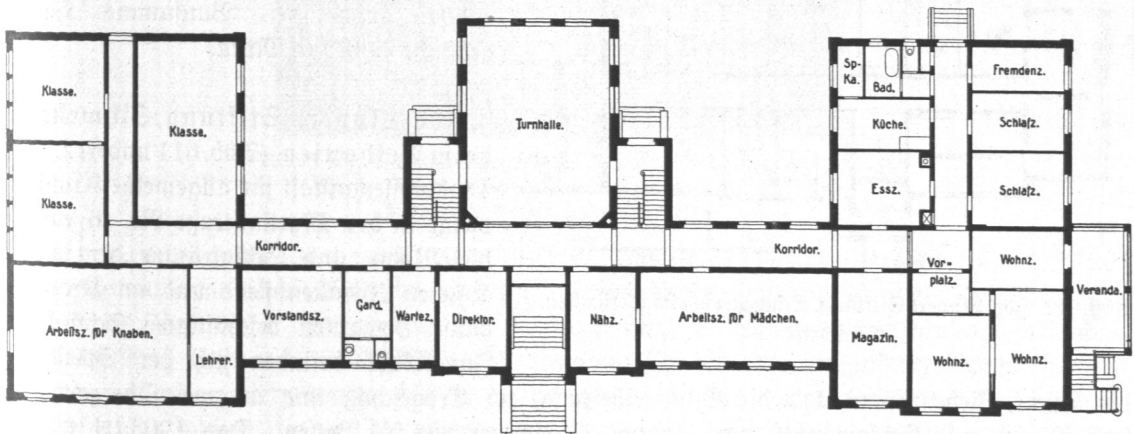


Abb. 609. Pestalozzi-Stift in Volksdorf, Erdgeschoß, Grundriß.

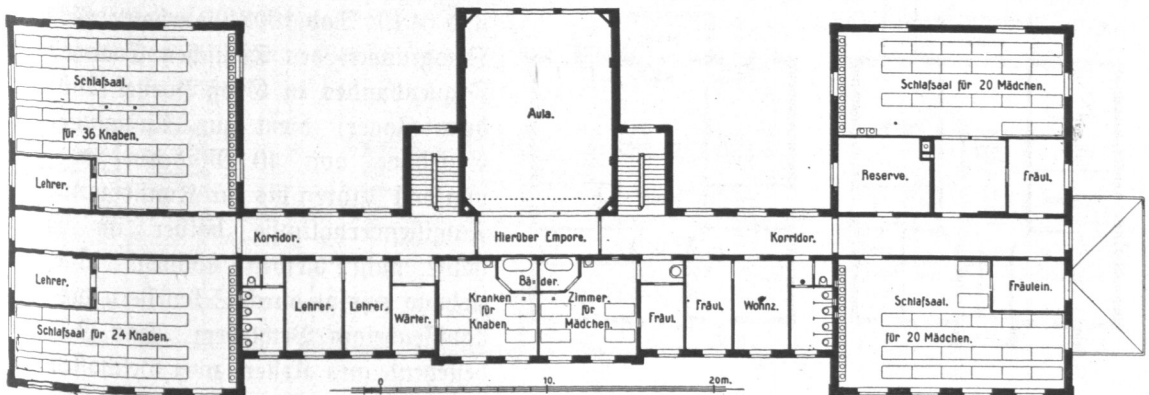


Abb. 610. Pestalozzi-Stift in Volksdorf, Obergeschoß, Grundriß.