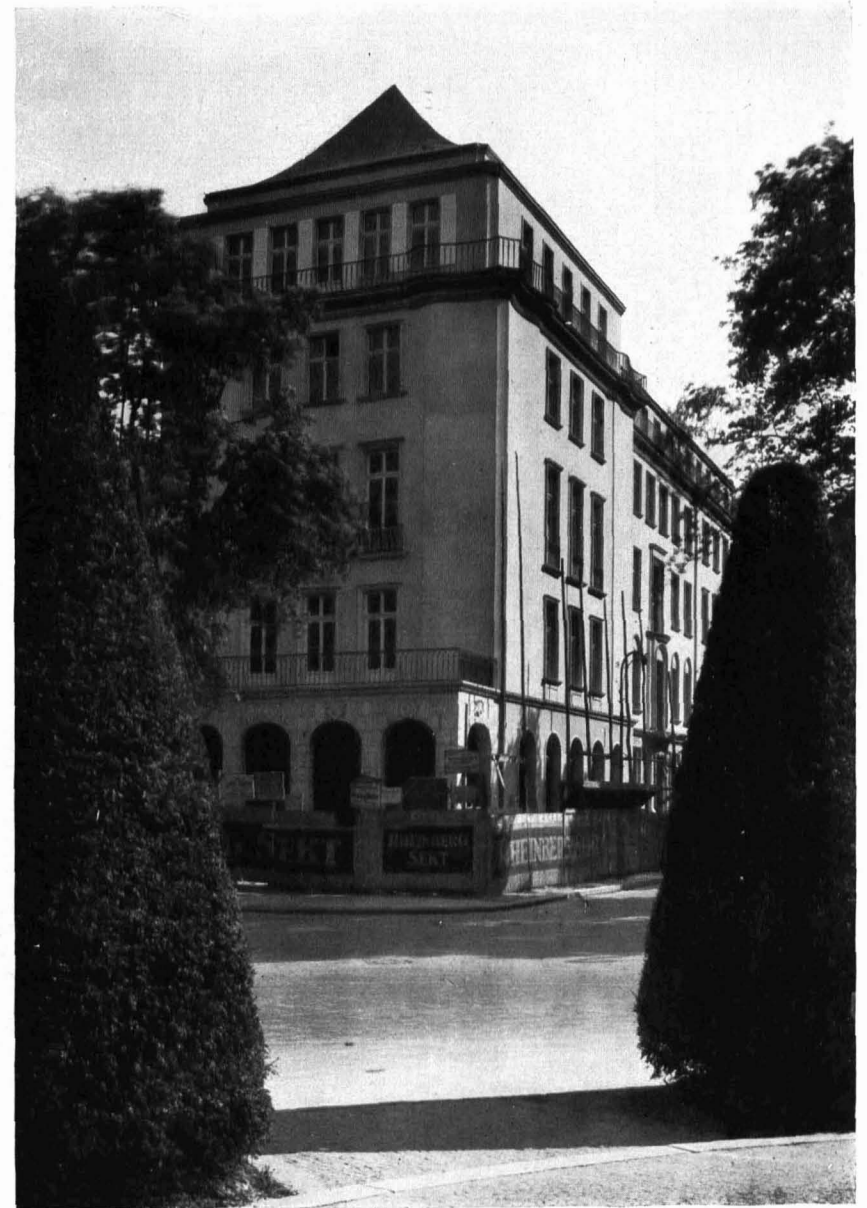




433 / BERLIN  
 Markgrafen-Krausen-Straße (links). 1920  
 Addition of two stories to old building (1920)  
 Arch.: Paul Mebes und Paul Emmerich



434 / BERLIN  
 Kemperplatz  
 Café. (Compare Ill. 411)  
 Arch.: Kaiser und Straumer